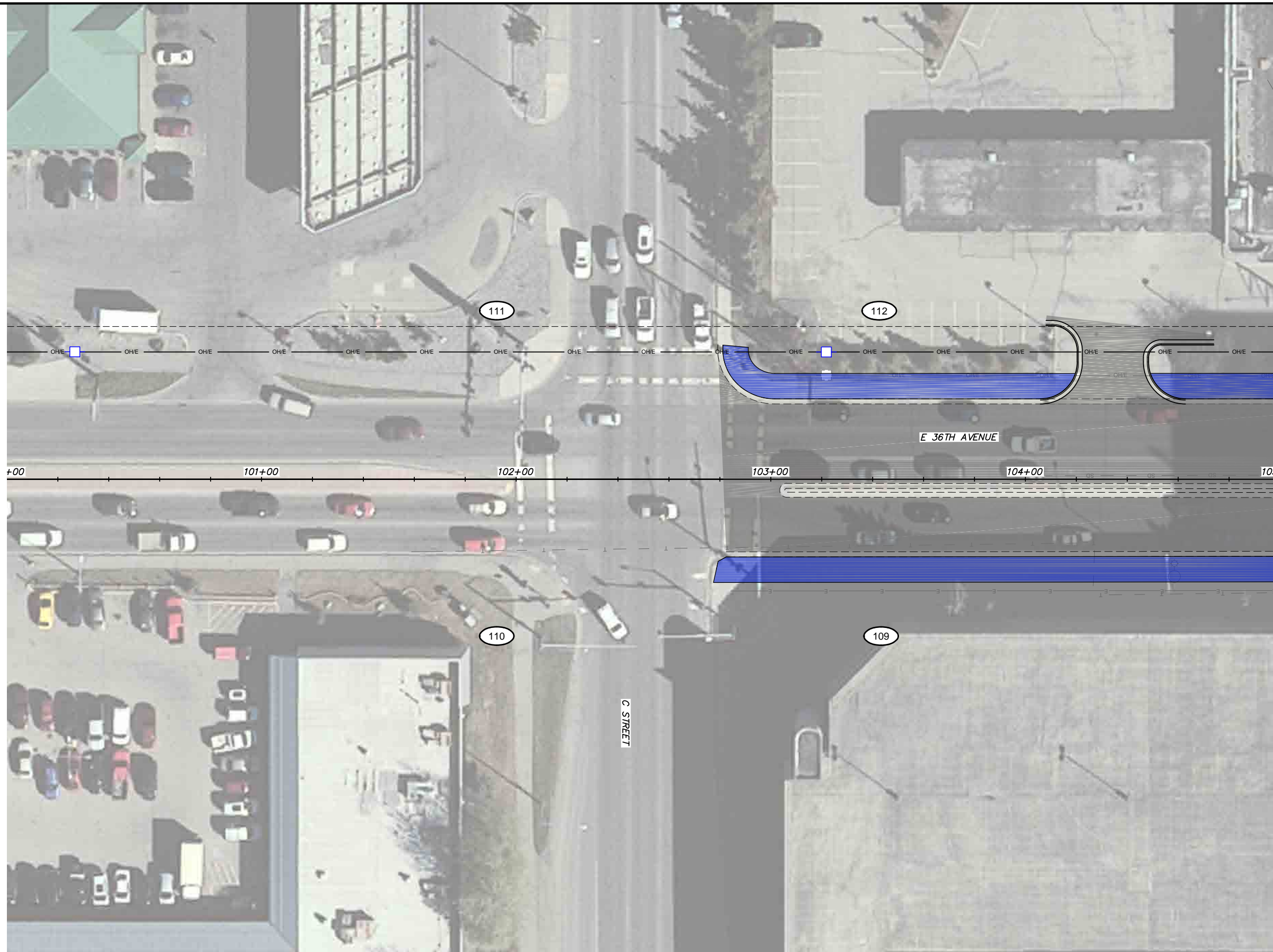


File Location: Z:\project\2517.01 MOA PME Denali Street\Civil\ACAD\2517_Plan_36th Alt 1.dwg

Plotted: 8/31/2018 9:33 AM

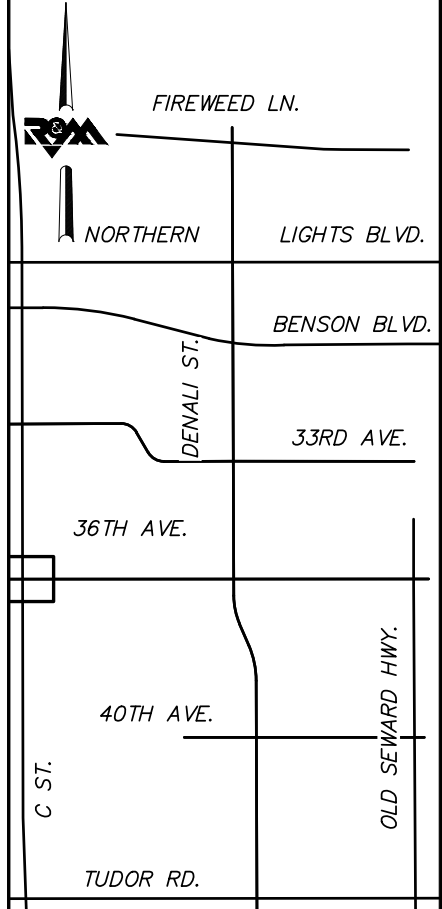


MATCH LINE E 36TH AVENUE STA. 105+00



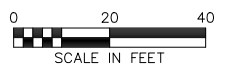
**BEFORE YOU DIG
CALL FOR FREE
UNDERGROUND
LOCATION**

LOCATE CALL CENTER OF ALASKA
STATEWIDE 800-478-3121 WILL
NOTIFY SUBSCRIBED UTILITIES ONLY.
OTHER UTILITIES NEED TO BE
CONTACTED INDIVIDUALLY.



KEYMAP

**DRAFT DSR
AUGUST 2018**



FIELD BOOKS	BM NO.	LOCATION	ELEV.	DATA	DRAWN BY	CHECKED BY	DATA	DRAWN BY	CHECKED BY	REV	DATE	DESCRIPTION	BY	REV	DATE	DESCRIPTION	BY
				BASE			TELEPHONE										
				TOPOGRAPHY			ELECTRIC										
				PROFILE			CABLE TV										
				SANITARY SEWER			DESIGN										
				STORM SEWER			QUANTITIES										
				WATER			MUN. FINAL CHK.										
				GAS													
CONTRACTOR				BASIS OF THIS DATUM													
INSPECTOR																	
CONSTRUCTION RECORD				VERTICAL DATUM				PLAN CHECK				REVISIONS					



R&M Consultants, Inc.
9101 Vanguard Drive
Anchorage, Alaska 99507
907 522 1707 voice
907 522 3404 fax
www.rmconsult.com

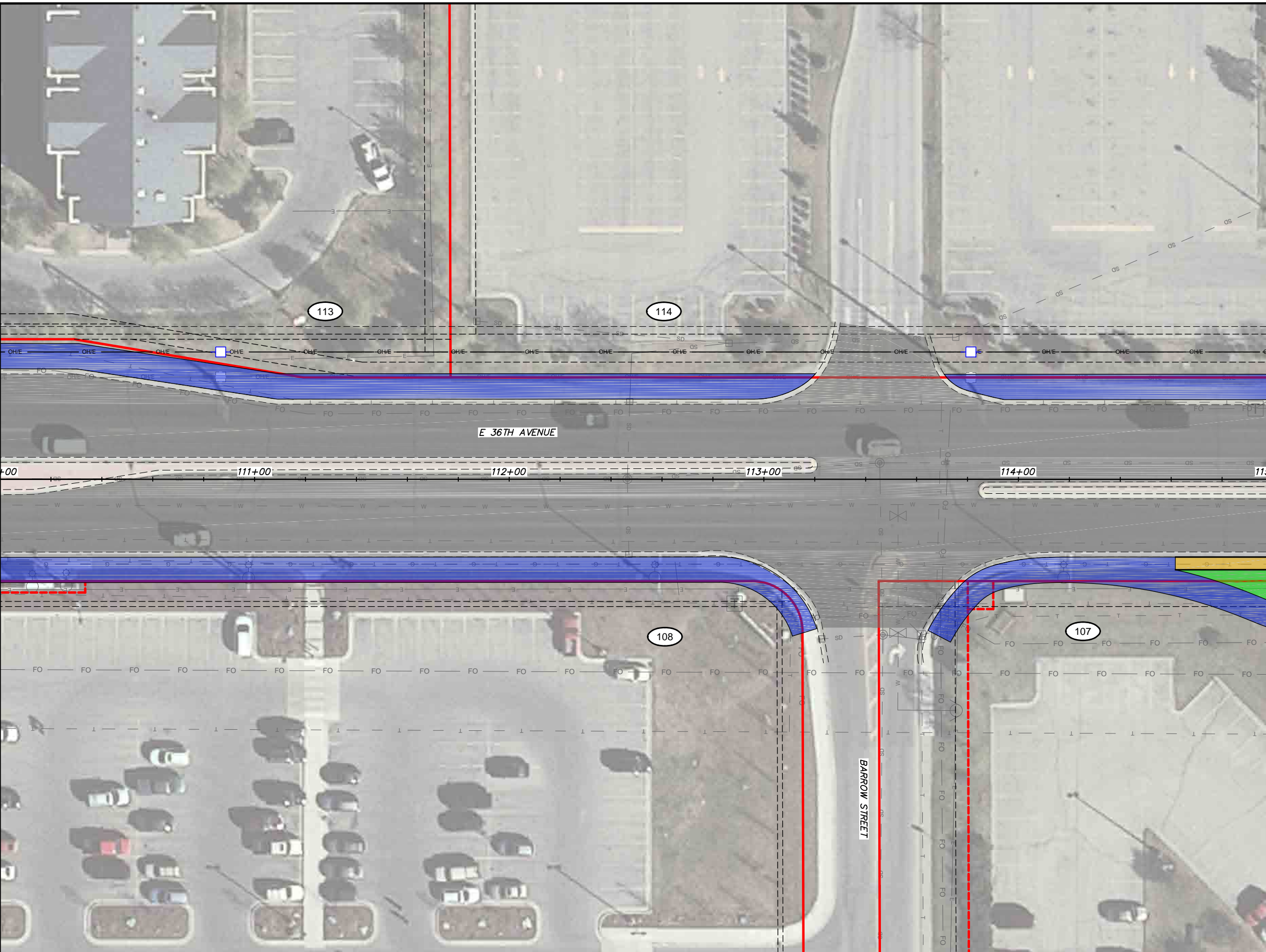


PROJECT MANAGEMENT AND ENGINEERING DEPARTMENT	
16-28	MIDTOWN CORRIDOR IMPROVEMENTS: DENALI STREET AREA - BENSON BLVD TO TUDOR RD 36TH AVENUE - ALTERNATIVE 1
SCALE 1:20	DATE 8/31/18 GRID 1531 1630 1631 1730 1731 SHEET 56 of 72

File Location: Z:\project\2517.01 MOA PME Denali Street\Civil\ACAD\2517_Plan 36th Alt 1.dwg

Plotted: 8/31/2018 9:33 AM

MATCH LINE E 36TH AVENUE STA. 110+00

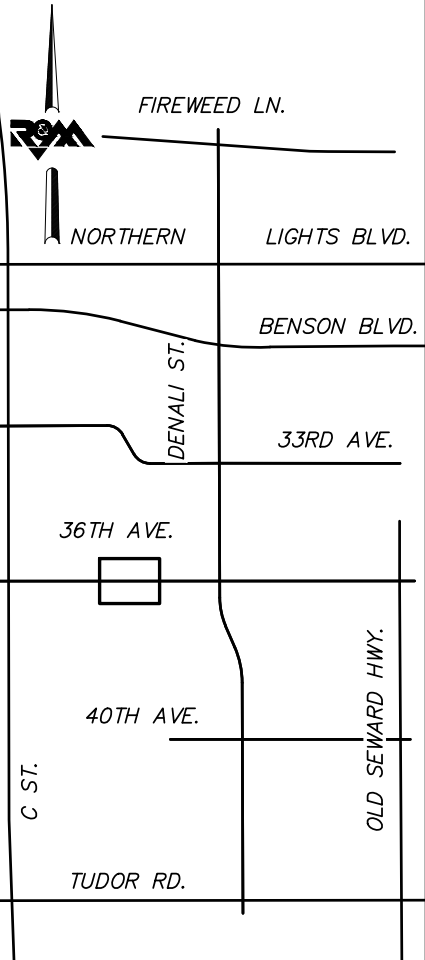


MATCH LINE E 36TH AVENUE STA. 115+00



**BEFORE YOU DIG
CALL FOR FREE
UNDERGROUND
LOCATION**

LOCATE CALL CENTER OF ALASKA
STATEWIDE 800-478-3121 WILL
NOTIFY SUBSCRIBED UTILITIES ONLY.
OTHER UTILITIES NEED TO BE
CONTACTED INDIVIDUALLY.



KEYMAP

**DRAFT DSR
AUGUST 2018**



FIELD BOOKS	BM NO.	LOCATION	ELEV.	DATA	DRAWN BY	CHECKED BY	DATA	DRAWN BY	CHECKED BY	REV	DATE	DESCRIPTION	BY	REV	DATE	DESCRIPTION	BY
DESIGN				BASE TOPOGRAPHY PROFILE SANITARY SEWER STORM SEWER WATER GAS			TELEPHONE ELECTRIC CABLE TV DESIGN QUANTITIES MUN. FINAL CHK.										
CONTRACTOR	BASIS OF THIS DATUM																
INSPECTOR	VERTICAL DATUM																
CONSTRUCTION RECORD	PLAN CHECK																
	REVISIONS																

R&M Consultants, Inc.
9101 Vanguard Drive
Anchorage, Alaska 99507
907 522 1707 voice
907 522 3404 fax
www.rmconsult.com

SEAL



PROJECT MANAGEMENT AND
ENGINEERING DEPARTMENT

16-28 MIDTOWN CORRIDOR IMPROVEMENTS:
DENALI STREET AREA - BENSON
BLVD TO TUDOR RD

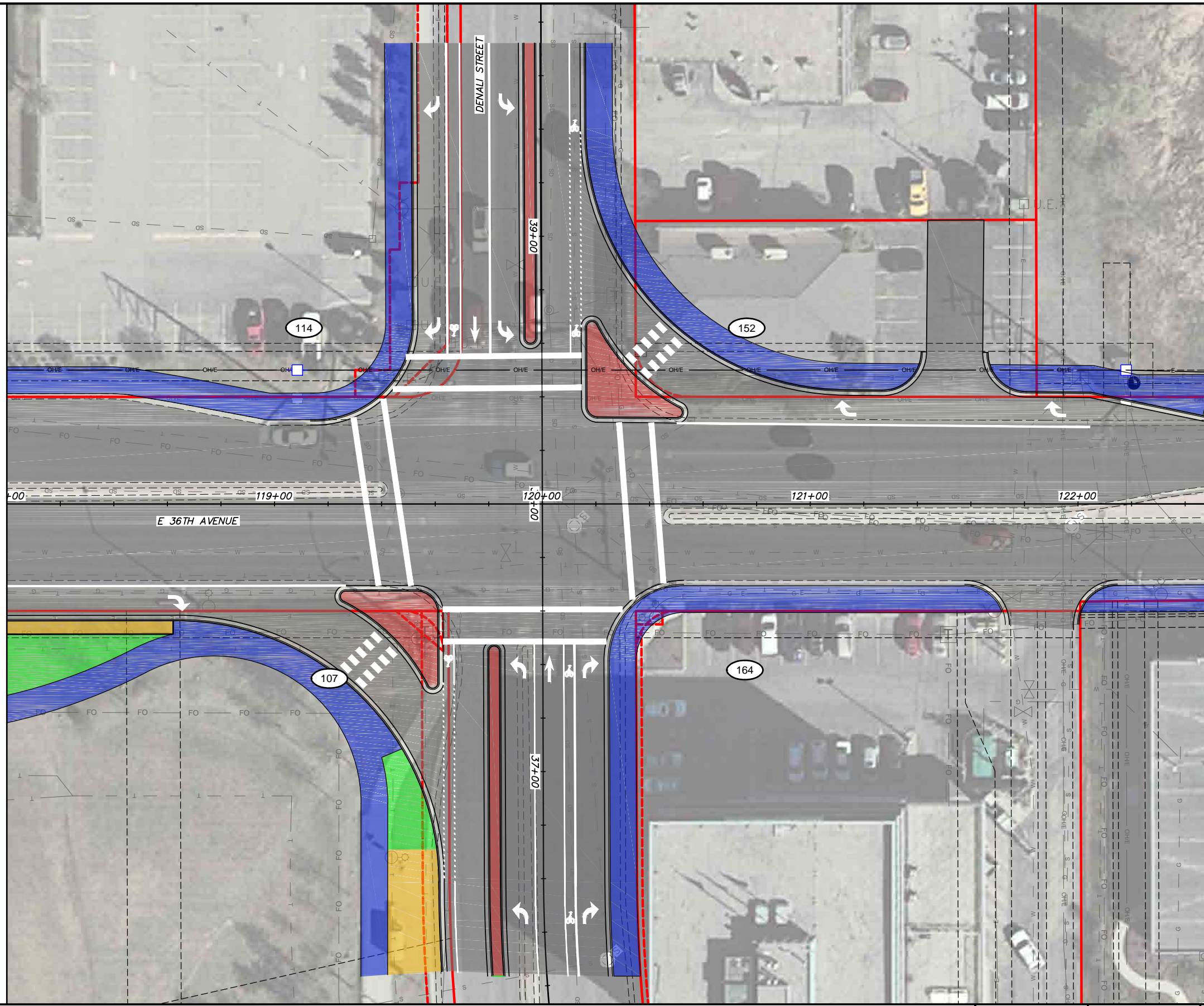
36TH AVENUE - ALTERNATIVE 1

SCALE 1:20 DATE 8/31/18 GRID 1531 1630 1631
ACCT. NO. 1730 1731 SHEET 58 of 72

File Location: Z:\project\2517.01 MOA PME Denali Street\Civil\ACAD\2517_Plan_36th Alt 1.dwg

Plotted: 8/31/2018 9:33 AM

MATCH LINE E 36TH AVENUE STA. 118+00

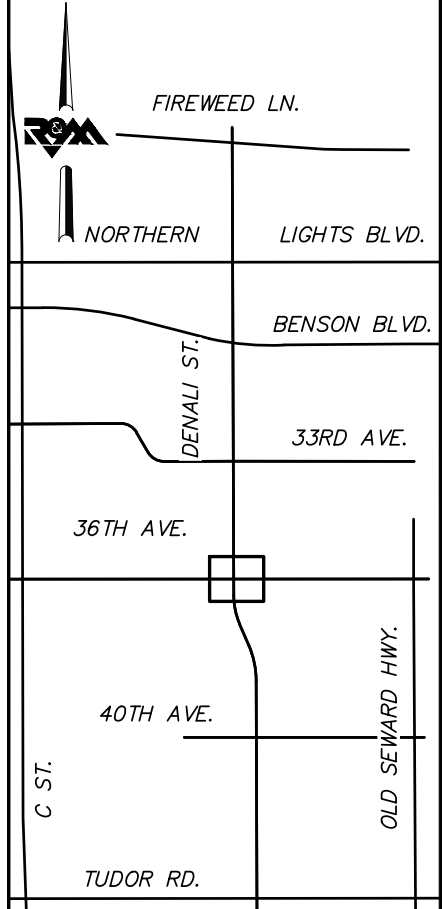


MATCH LINE E 36TH AVENUE STA. 122+50



BEFORE YOU DIG
CALL FOR FREE
UNDERGROUND
LOCATION

LOCATE CALL CENTER OF ALASKA
STATEWIDE 800-478-3121 WILL
NOTIFY SUBSCRIBED UTILITIES ONLY.
OTHER UTILITIES NEED TO BE
CONTACTED INDIVIDUALLY.



KEYMAP

DRAFT DSR
AUGUST 2018



FIELD BOOKS	BM NO.	LOCATION	ELEV.	DATA	DRAWN BY	CHECKED BY	DATA	DRAWN BY	CHECKED BY	REV	DATE	DESCRIPTION	BY	REV	DATE	DESCRIPTION	BY
				BASE			TELEPHONE										
				TOPOGRAPHY			ELECTRIC										
				PROFILE			CABLE TV										
				SANITARY SEWER			DESIGN										
				STORM SEWER			QUANTITIES										
				WATER			MUN. FINAL CHK.										
				GAS													
CONTRACTOR	BASIS OF THIS DATUM																
INSPECTOR				PLAN CHECK				REVISIONS				CONSULTANT					
CONSTRUCTION RECORD	VERTICAL DATUM											SEAL					



R&M Consultants, Inc.
9101 Vanguard Drive
Anchorage, Alaska 99507
907 522 1707 voice
907 522 3404 fax
www.rmconsult.com

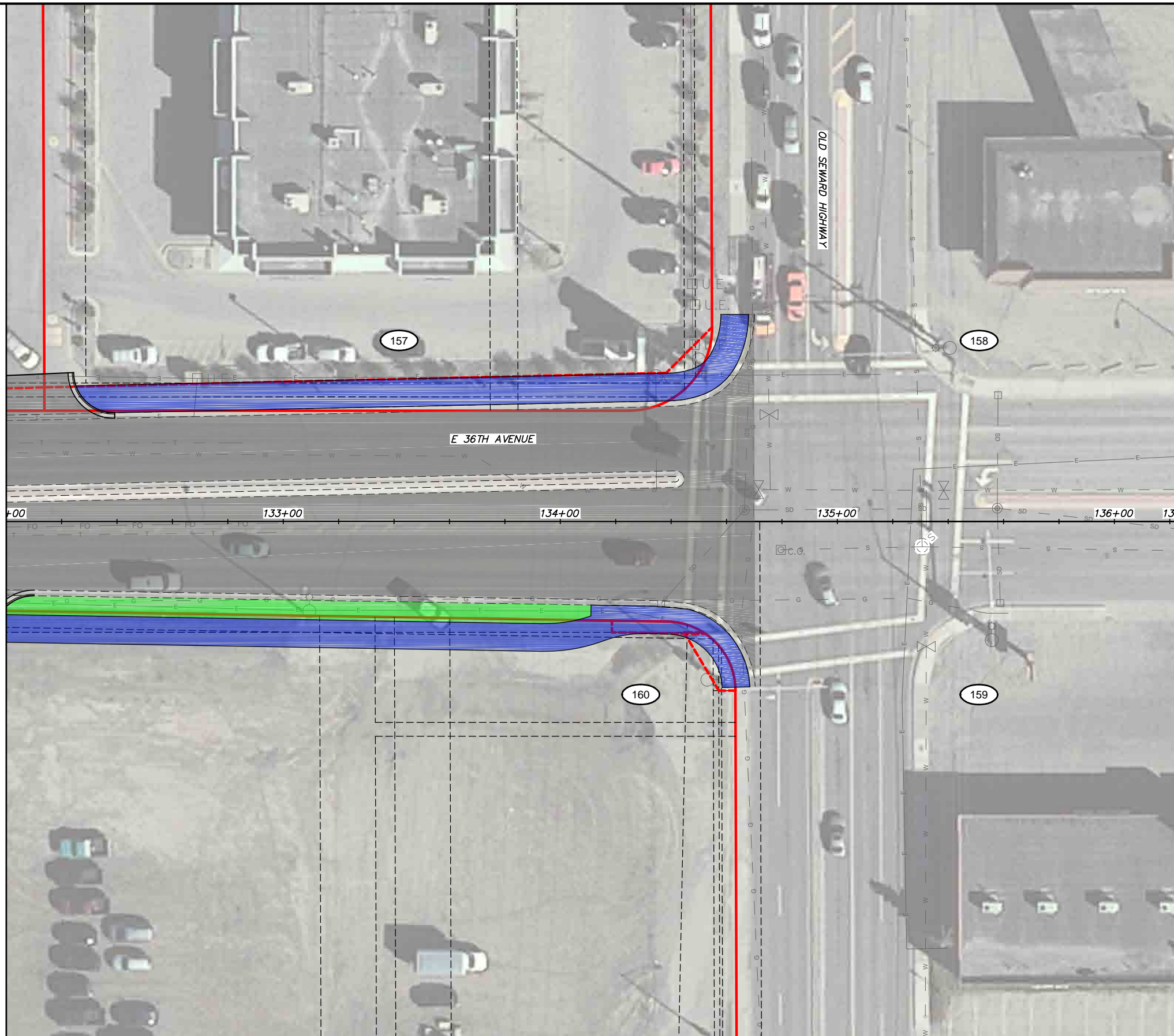


PROJECT MANAGEMENT AND ENGINEERING DEPARTMENT	
16-28	MIDTOWN CORRIDOR IMPROVEMENTS: DENALI STREET AREA - BENSON BLVD TO TUDOR RD 36TH AVENUE - ALTERNATIVE 1
SCALE 1:20	DATE 8/31/18 GRID 1531 1630 1631 1730 1731 SHEET 60 of 72

File Location: Z:\project\2517.01 MOA PME Denali Street\Civil\ACAD\2517_Plan_36th Alt 1.dwg

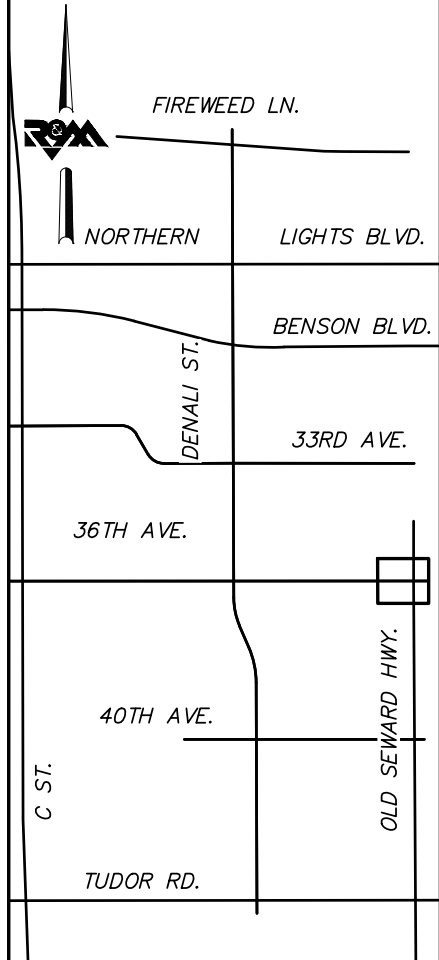
Plotted: 8/31/2018 9:34 AM

MATCH LINE E 36TH AVENUE STA. 132+00



BEFORE YOU DIG
CALL FOR FREE
UNDERGROUND
LOCATION

LOCATE CALL CENTER OF ALASKA
STATEWIDE 800-478-3121 WILL
NOTIFY SUBSCRIBED UTILITIES ONLY.
OTHER UTILITIES NEED TO BE
CONTACTED INDIVIDUALLY.



KEYMAP

**DRAFT DSR
AUGUST 2018**



FIELD BOOKS	BM NO.	LOCATION	ELEV.	DATA	DRAWN BY	CHECKED BY	DATA	DRAWN BY	CHECKED BY	REV	DATE	DESCRIPTION	BY	REV	DATE	DESCRIPTION	BY
DESIGN				BASE			TELEPHONE										
				TOPOGRAPHY			ELECTRIC										
				PROFILE			CABLE TV										
				SANITARY SEWER			DESIGN										
				STORM SEWER			QUANTITIES										
CONTRACTOR	BASIS OF THIS DATUM			WATER			MUN. FINAL CHK.										
INSPECTOR				GAS													
CONSTRUCTION RECORD	VERTICAL DATUM			PLAN CHECK				REVISIONS				CONSULTANT		SEAL			



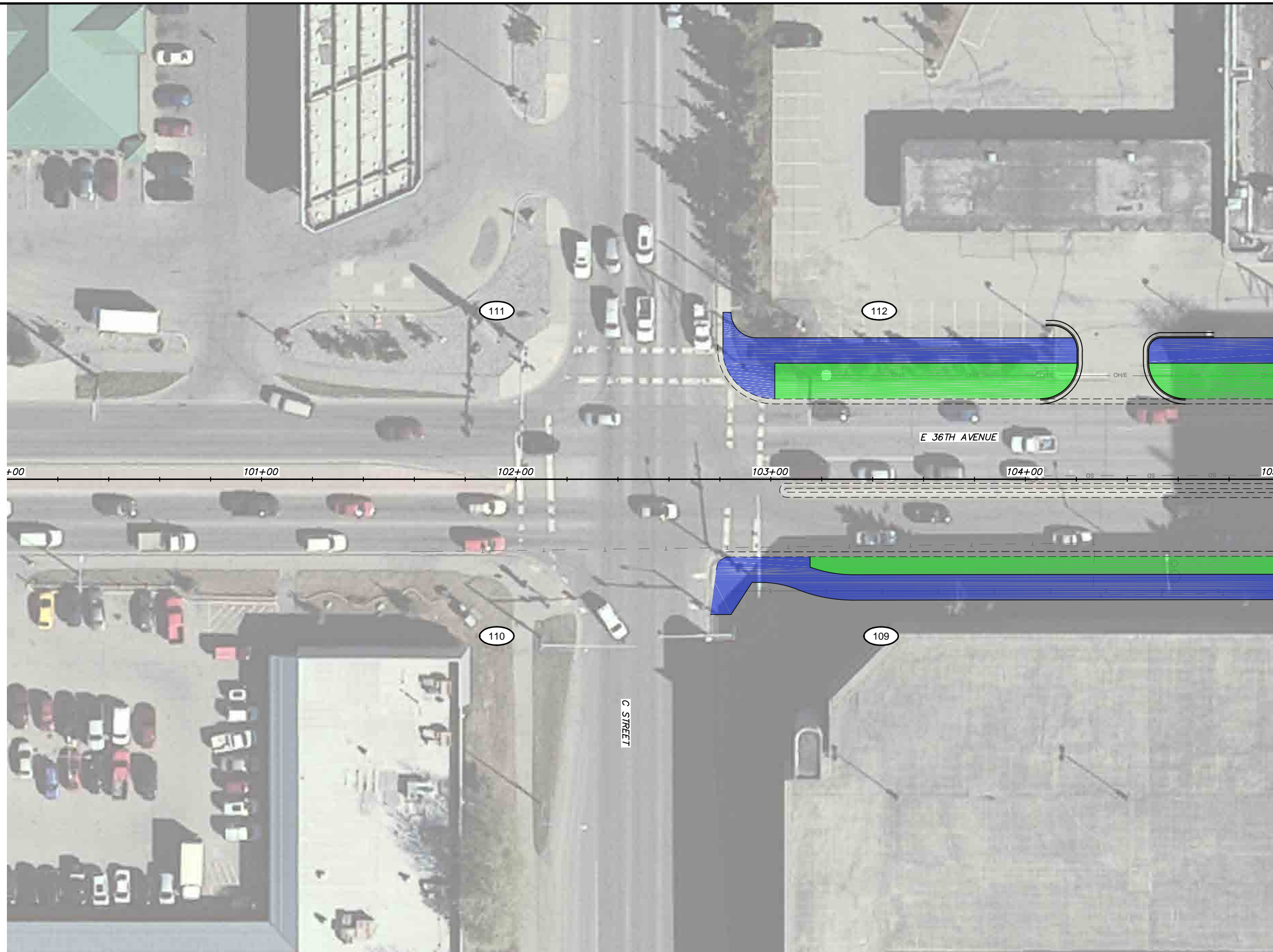
R&M Consultants, Inc.
9101 Vanguard Drive
Anchorage, Alaska 99507
907 522 1707 voice
907 522 3404 fax
www.rmconsult.com



PROJECT MANAGEMENT AND ENGINEERING DEPARTMENT	
16-28	MIDTOWN CORRIDOR IMPROVEMENTS: DENALI STREET AREA - BENSON BLVD TO TUDOR RD 36TH AVENUE - ALTERNATIVE 1
SCALE 1:20	DATE 8/31/18 GRID 1531 1630 1631 1730 1731 SHEET 63 of 72

File Location: Z:\project\2517.01 MOA PME Denali Street\Civil\ACAD\2517_Plan_36th Alt 2.dwg

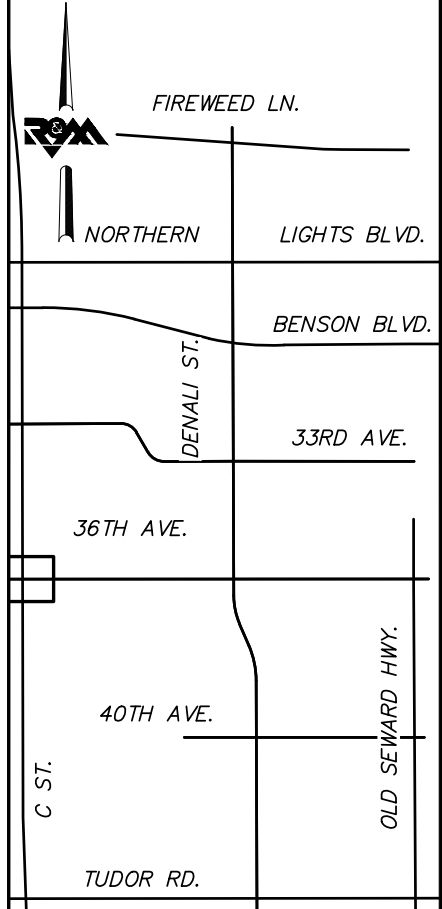
Plotted: 8/31/2018 9:36 AM



**BEFORE YOU DIG
CALL FOR FREE
UNDERGROUND
LOCATION**

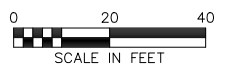
LOCATE CALL CENTER OF ALASKA
STATEWIDE 800-478-3121 WILL
NOTIFY SUBSCRIBED UTILITIES ONLY.
OTHER UTILITIES NEED TO BE
CONTACTED INDIVIDUALLY.

MATCH LINE E 36TH AVENUE STA. 105+00



KEYMAP

**DRAFT DSR
AUGUST 2018**



FIELD BOOKS	BM NO.	LOCATION	ELEV.	DATA	DRAWN BY	CHECKED BY	DATA	DRAWN BY	CHECKED BY	REV	DATE	DESCRIPTION	BY	REV	DATE	DESCRIPTION	BY														
				BASE			TELEPHONE																								
				TOPOGRAPHY			ELECTRIC																								
				PROFILE			CABLE TV																								
				SANITARY SEWER			DESIGN																								
				STORM SEWER			QUANTITIES																								
				WATER			MUN. FINAL CHK.																								
				GAS																											
CONTRACTOR				BASIS OF THIS DATUM				CONSTRUCTION RECORD				VERTICAL DATUM				PLAN CHECK				REVISIONS				CONSULTANT				SEAL			



R&M Consultants, Inc.
9101 Vanguard Drive
Anchorage, Alaska 99507
907 522 1707 voice
907 522 3404 fax
www.rmconsult.com



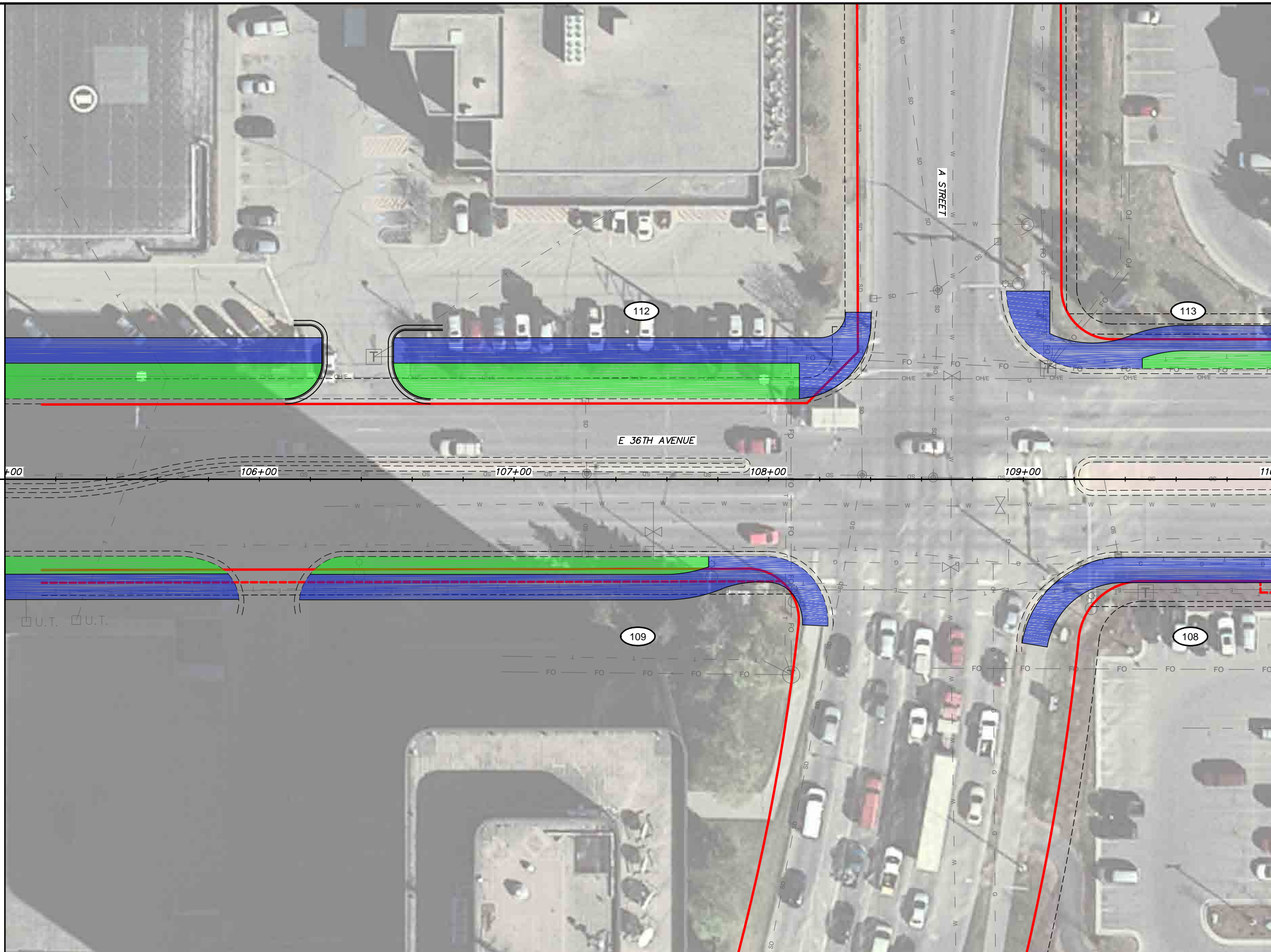
PROJECT MANAGEMENT AND ENGINEERING DEPARTMENT	
16-28	MIDTOWN CORRIDOR IMPROVEMENTS: DENALI STREET AREA - BENSON BLVD TO TUDOR RD 36TH AVENUE - ALTERNATIVE 2
SCALE 1:20	DATE 8/31/18 GRID 1531 1630 1631 1730 1731 SHEET 64 of 72

File Location: Z:\project\2517.01 MOA PME Denali Street\Civil\ACAD\2517_Plan 36th Alt 2.dwg

Plotted: 8/31/2018 9:37 AM

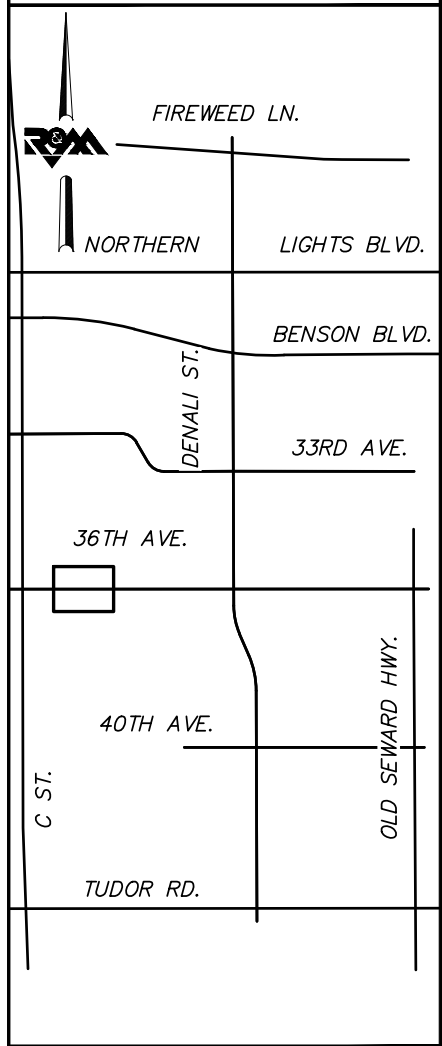
MATCH LINE E 36TH AVENUE STA. 105+00

MATCH LINE E 36TH AVENUE STA. 110+00



**BEFORE YOU DIG
CALL FOR FREE
UNDERGROUND
LOCATION**

LOCATE CALL CENTER OF ALASKA
STATEWIDE 800-478-3121 WILL
NOTIFY SUBSCRIBED UTILITIES ONLY.
OTHER UTILITIES NEED TO BE
CONTACTED INDIVIDUALLY.



KEYMAP

**DRAFT DSR
AUGUST 2018**



FIELD BOOKS	BM NO.	LOCATION	ELEV.	DATA	DRAWN BY	CHECKED BY	DATA	DRAWN BY	CHECKED BY	REV	DATE	DESCRIPTION	BY	REV	DATE	DESCRIPTION	BY
DESIGN				BASE			TELEPHONE										
				TOPOGRAPHY			ELECTRIC										
				PROFILE			CABLE TV										
				SANITARY SEWER			DESIGN										
				STORM SEWER			QUANTITIES										
CONTRACTOR	BASIS OF THIS DATUM			WATER			MUN. FINAL CHK.										
INSPECTOR				GAS													
CONSTRUCTION RECORD		VERTICAL DATUM		PLAN CHECK			REVISIONS										

R&M Consultants, Inc.
9101 Vanguard Drive
Anchorage, Alaska 99507
907 522 1707 voice
907 522 3404 fax
www.rmconsult.com



PROJECT MANAGEMENT AND
ENGINEERING DEPARTMENT

16-28 MIDTOWN CORRIDOR IMPROVEMENTS:
DENALI STREET AREA - BENSON
BLVD TO TUDOR RD

36TH AVENUE - ALTERNATIVE 2

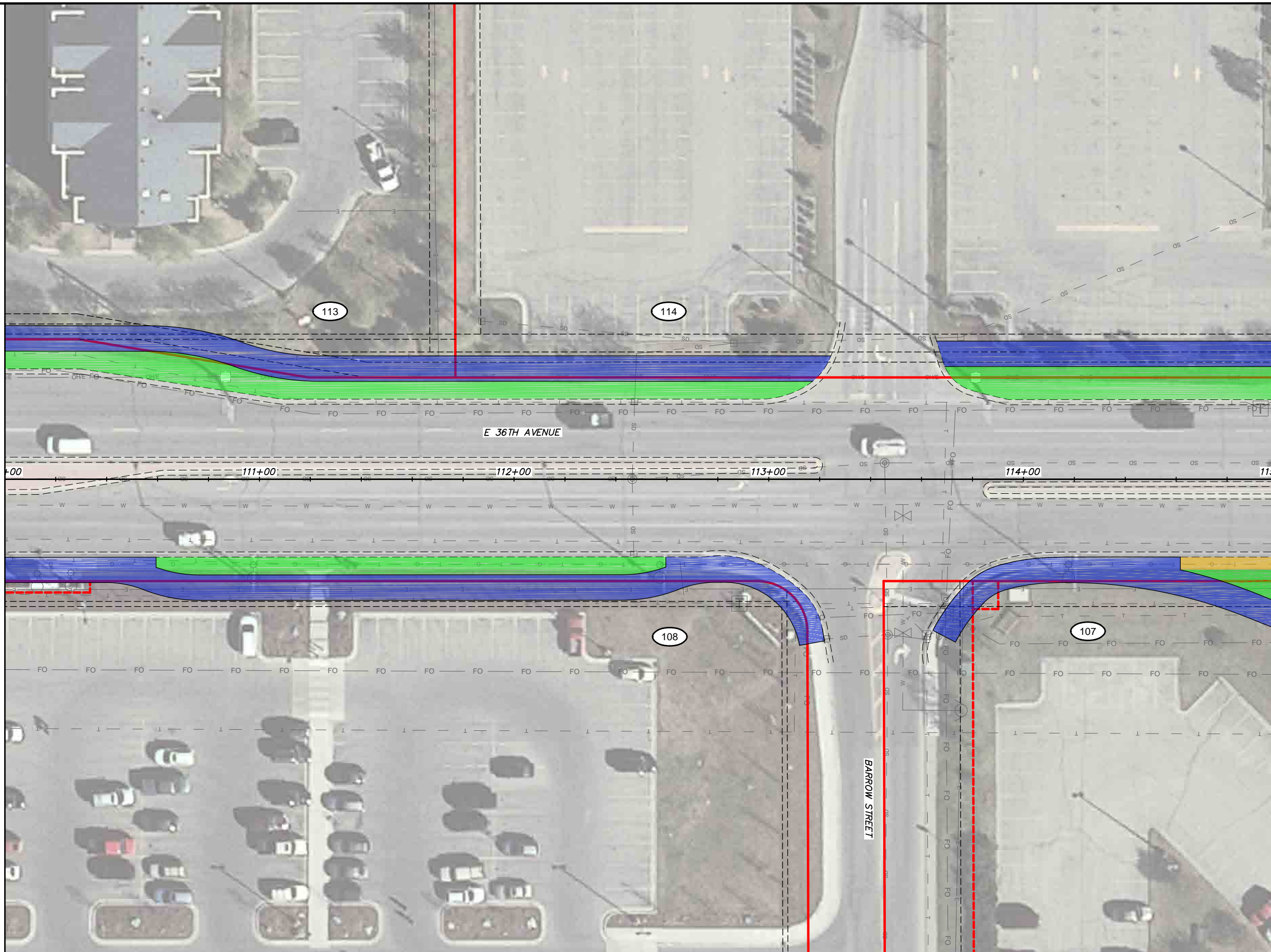
SCALE 1:20 DATE 8/31/18 GRID 1531 1630 1631
ACCT. NO. 1730 1731 SHEET 65 of 72

File Location: Z:\project\2517.01 MOA PME Denali Street\Civil\ACAD\2517_Plan 36th Alt 2.dwg

Plotted: 8/31/2018 9:37 AM

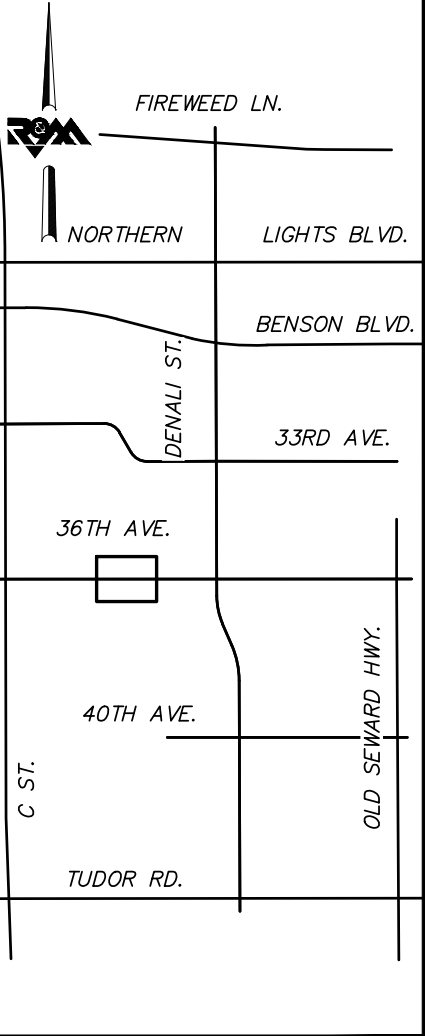
MATCH LINE E 36TH AVENUE STA. 110+00

MATCH LINE E 36TH AVENUE STA. 115+00



**BEFORE YOU DIG
CALL FOR FREE
UNDERGROUND
LOCATION**

LOCATE CALL CENTER OF ALASKA
STATEWIDE 800-478-3121 WILL
NOTIFY SUBSCRIBED UTILITIES ONLY.
OTHER UTILITIES NEED TO BE
CONTACTED INDIVIDUALLY.



KEYMAP

**DRAFT DSR
AUGUST 2018**



FIELD BOOKS	BM NO.	LOCATION	ELEV.	DATA	DRAWN BY	CHECKED BY	DATA	DRAWN BY	CHECKED BY	REV	DATE	DESCRIPTION	BY	REV	DATE	DESCRIPTION	BY
DESIGN				BASE TOPOGRAPHY PROFILE SANITARY SEWER STORM SEWER WATER GAS			TELEPHONE ELECTRIC CABLE TV DESIGN QUANTITIES MUN. FINAL CHK.										
CONTRACTOR	BASIS OF THIS DATUM																
INSPECTOR																	
CONSTRUCTION RECORD		VERTICAL DATUM					PLAN CHECK										
																	REVISIONS

R&M Consultants, Inc.
9101 Vanguard Drive
Anchorage, Alaska 99507
907 522 1707 voice
907 522 3404 fax
www.rmconsult.com

SEAL



PROJECT MANAGEMENT AND
ENGINEERING DEPARTMENT

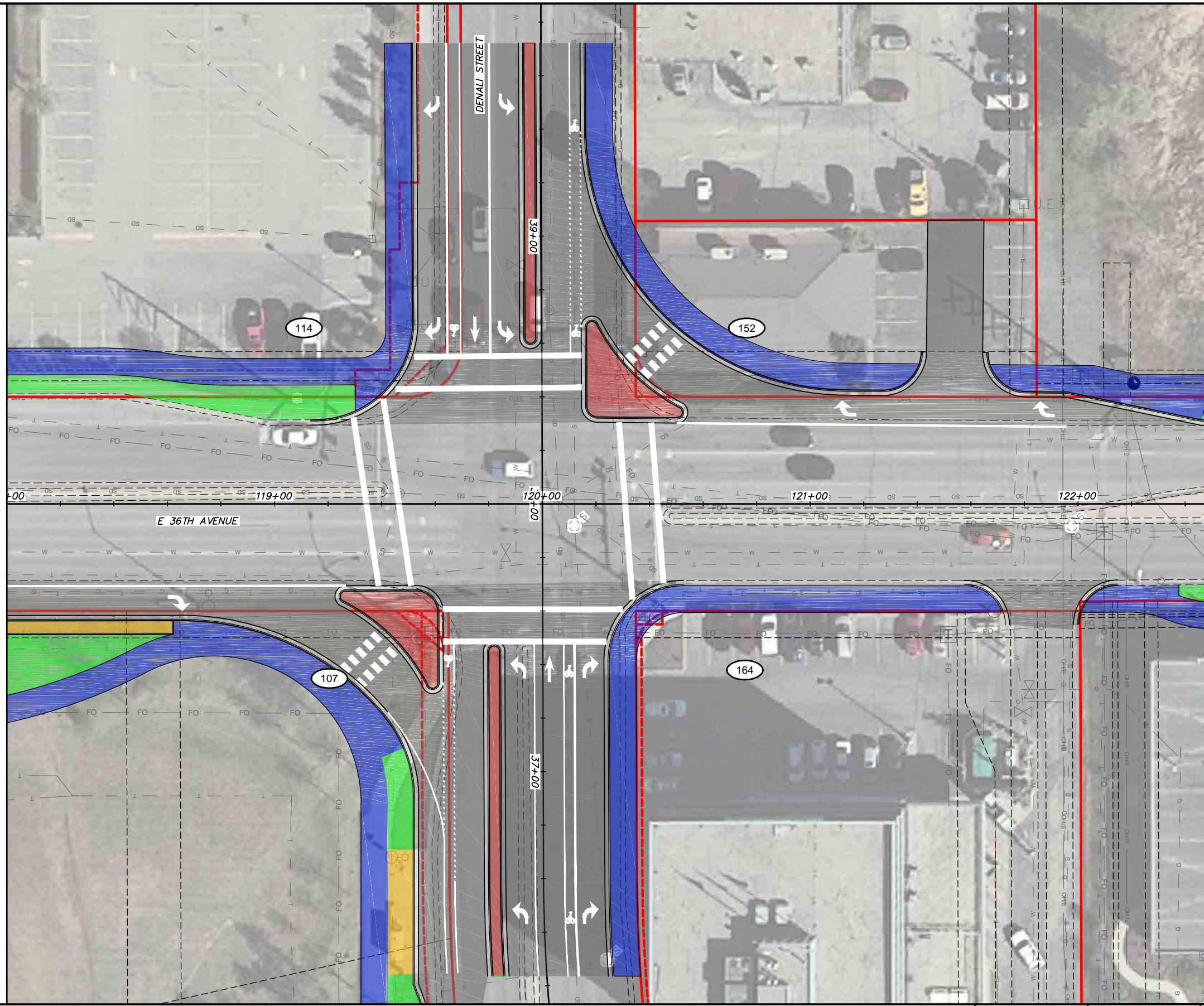
16-28 MIDTOWN CORRIDOR IMPROVEMENTS:
DENALI STREET AREA - BENSON
BLVD TO TUDOR RD
36TH AVENUE - ALTERNATIVE 2

SCALE 1:20 DATE 8/31/18 GRID 1531 1630 1631
ACCT. NO. 1730 1731 SHEET 66 of 72

File Location: Z:\project\2517.01 MOA PME Denali Street\Civil\ACAD\2517_Plan_36th Alt 2.dwg

Plotted: 8/31/2018 9:37 AM

MATCH LINE E 36TH AVENUE STA. 118+00

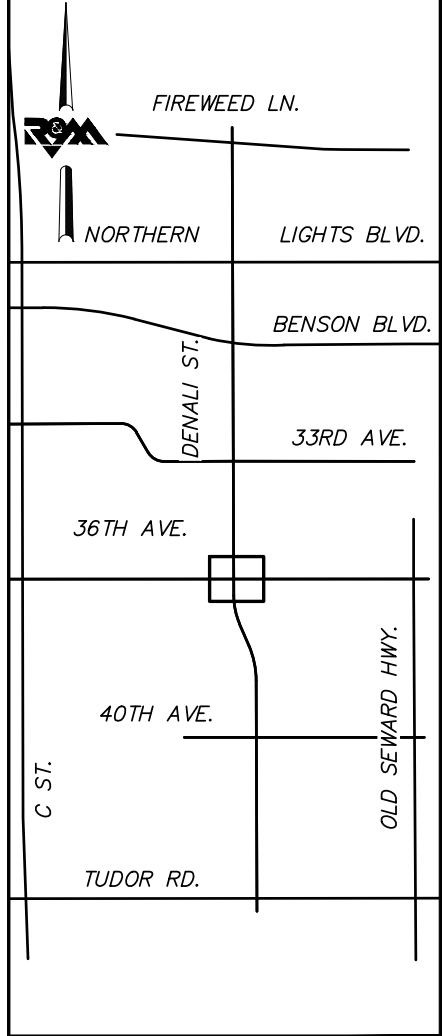


MATCH LINE E 36TH AVENUE STA. 122+50



**BEFORE YOU DIG
CALL FOR FREE
UNDERGROUND
LOCATION**

LOCATE CALL CENTER OF ALASKA
STATEWIDE 800-478-3121 WILL
NOTIFY SUBSCRIBED UTILITIES ONLY.
OTHER UTILITIES NEED TO BE
CONTACTED INDIVIDUALLY.



KEYMAP

**DRAFT DSR
AUGUST 2018**



FIELD BOOKS	BM NO.	LOCATION	ELEV.	DATA	DRAWN BY	CHECKED BY	DATA	DRAWN BY	CHECKED BY	REV	DATE	DESCRIPTION	BY	REV	DATE	DESCRIPTION	BY
				BASE			TELEPHONE										
				TOPOGRAPHY			ELECTRIC										
				PROFILE			CABLE TV										
				SANITARY SEWER			DESIGN										
				STORM SEWER			QUANTITIES										
				WATER			MUN. FINAL CHK.										
				GAS													
CONTRACTOR	BASIS OF THIS DATUM																
INSPECTOR				PLAN CHECK				REVISIONS				CONSULTANT					
CONSTRUCTION RECORD	VERTICAL DATUM											SEAL					



R&M Consultants, Inc.
9101 Vanguard Drive
Anchorage, Alaska 99507
907 522 1707 voice
907 522 3404 fax
www.rmconsult.com



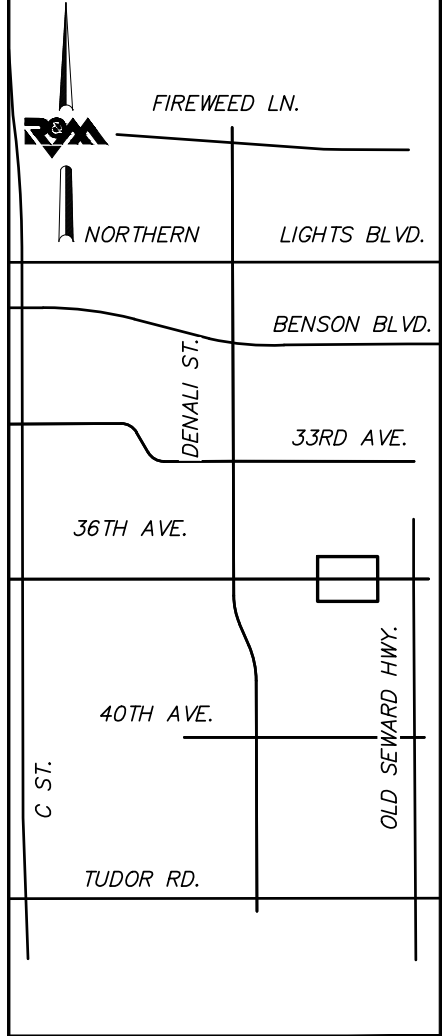
PROJECT MANAGEMENT AND ENGINEERING DEPARTMENT	
16-28	MIDTOWN CORRIDOR IMPROVEMENTS: DENALI STREET AREA - BENSON BLVD TO TUDOR RD 36TH AVENUE - ALTERNATIVE 2
SCALE 1:20	DATE 8/31/18 GRID 1531 1630 1631 1730 1731 SHEET 68 of 72

MATCH LINE PROPOSED PATH TO 34TH AVENUE, SEE SHEET 72



BEFORE YOU DIG
CALL FOR FREE
UNDERGROUND
LOCATION

LOCATE CALL CENTER OF ALASKA
STATEWIDE 800-478-3121 WILL
NOTIFY SUBSCRIBED UTILITIES ONLY.
OTHER UTILITIES NEED TO BE
CONTACTED INDIVIDUALLY.



KEYMAP

DRAFT DSR
AUGUST 2018



SCALE IN FEET



MATCH LINE E 36TH AVENUE STA. 127+00

MATCH LINE E 36TH AVENUE STA. 132+00

File Location: Z:\project\2517.01 MOA PME Denali Street\Civil\ACAD\2517_Plan 36th Alt 2.dwg

Plotted: 8/31/2018 9:37 AM

FIELD BOOKS	BM NO.	LOCATION	ELEV.	DATA	DRAWN BY	CHECKED BY	DATA	DRAWN BY	CHECKED BY	REV	DATE	DESCRIPTION	BY	REV	DATE	DESCRIPTION	BY
				BASE			TELEPHONE										
				TOPOGRAPHY			ELECTRIC										
				PROFILE			CABLE TV										
				SANITARY SEWER			DESIGN										
				STORM SEWER			QUANTITIES										
				WATER			MUN. FINAL CHK.										
				GAS													
CONTRACTOR	BASIS OF THIS DATUM																
INSPECTOR																	
CONSTRUCTION RECORD	VERTICAL DATUM			PLAN CHECK				REVISIONS				CONSULTANT					



R&M Consultants, Inc.
9101 Vanguard Drive
Anchorage, Alaska 99507
907 522 1707 voice
907 522 3404 fax
www.rmconsult.com

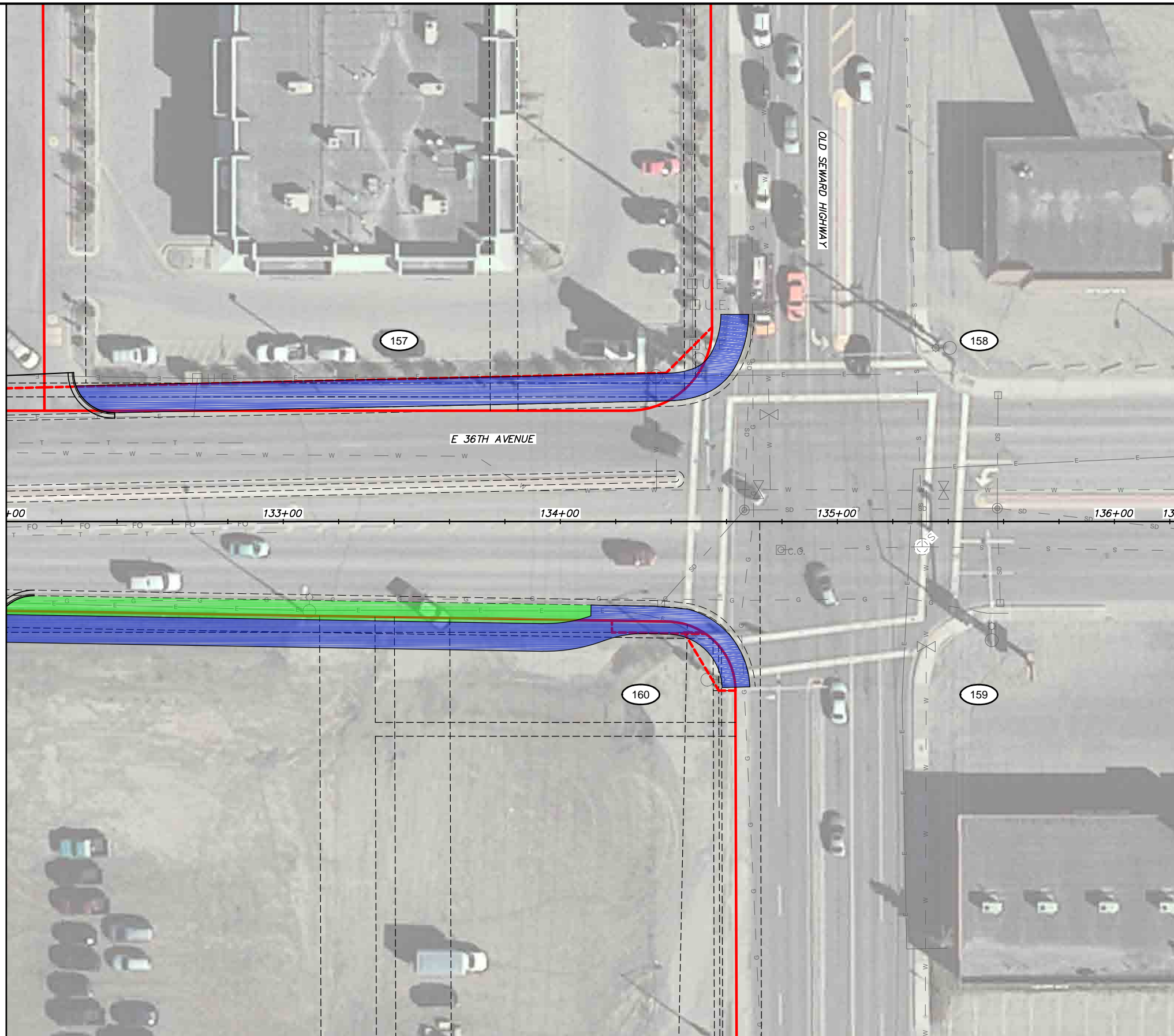


PROJECT MANAGEMENT AND ENGINEERING DEPARTMENT	
16-28	MIDTOWN CORRIDOR IMPROVEMENTS: DENALI STREET AREA - BENSON BLVD TO TUDOR RD 36TH AVENUE - ALTERNATIVE 2
SCALE 1:20	DATE 8/31/18 GRID 1531 1630 1631 1730 1731 SHEET 70 of 72

File Location: Z:\project\2517.01 MOA PME Denali Street\ACAD\2517_Plan_36th Alt 2.dwg

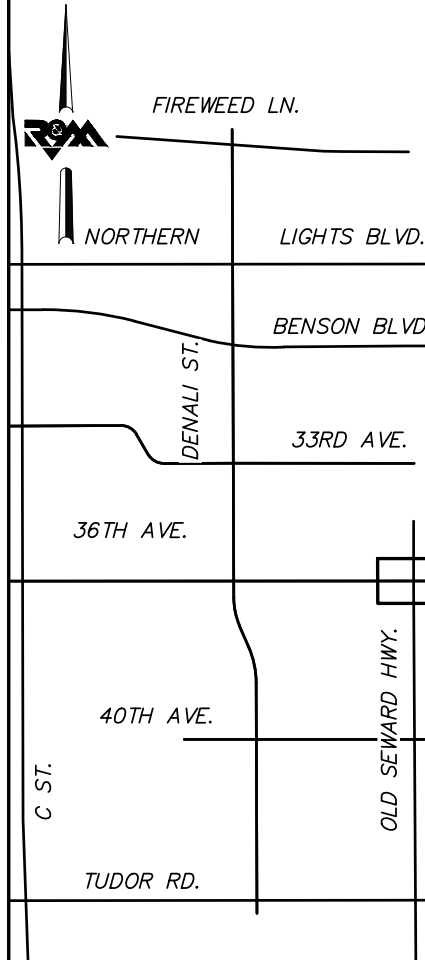
Plotted: 8/31/2018 9:38 AM

MATCH LINE E 36TH AVENUE STA. 132+00



**BEFORE YOU DIG
CALL FOR FREE
UNDERGROUND
LOCATION**

LOCATE CALL CENTER OF ALASKA
STATEWIDE 800-478-3121 WILL
NOTIFY SUBSCRIBED UTILITIES ONLY.
OTHER UTILITIES NEED TO BE
CONTACTED INDIVIDUALLY.



KEYMAP

**DRAFT DSR
AUGUST 2018**



FIELD BOOKS	BM NO.	LOCATION	ELEV.	DATA	DRAWN BY	CHECKED BY	DATA	DRAWN BY	CHECKED BY	REV	DATE	DESCRIPTION	BY	REV	DATE	DESCRIPTION	BY	
DESIGN				BASE			TELEPHONE											
				TOPOGRAPHY			ELECTRIC											
				PROFILE			CABLE TV											
				SANITARY SEWER			DESIGN											
				STORM SEWER			QUANTITIES											
CONTRACTOR	BASIS OF THIS DATUM			WATER			MUN. FINAL CHK.											
INSPECTOR				GAS														
CONSTRUCTION RECORD		VERTICAL DATUM				PLAN CHECK										REVISIONS		



R&M Consultants, Inc.
9101 Vanguard Drive
Anchorage, Alaska 99507
907 522 1707 voice
907 522 3404 fax
www.rmconsult.com



PROJECT MANAGEMENT AND ENGINEERING DEPARTMENT	
16-28	MIDTOWN CORRIDOR IMPROVEMENTS: DENALI STREET AREA - BENSON BLVD TO TUDOR RD 36TH AVENUE - ALTERNATIVE 2
SCALE 1:20	DATE 8/31/18 GRID 1531 1630 1631 1730 1731 SHEET 71 of 72

File Location: Z:\project\2517.01 MOA PME Denali Street\Civil\ACAD\2517_Plan 36th Alt 2.dwg

Plotted: 8/31/2018 9:38 AM

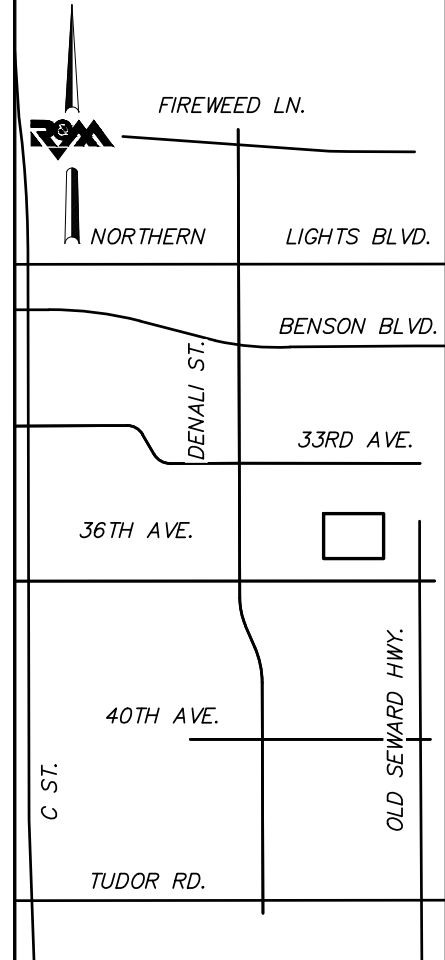


E 34TH AVENUE



**BEFORE YOU DIG
CALL FOR FREE
UNDERGROUND
LOCATION**

LOCATE CALL CENTER OF ALASKA
STATEWIDE 800-478-3121 WILL
NOTIFY SUBSCRIBED UTILITIES ONLY.
OTHER UTILITIES NEED TO BE
CONTACTED INDIVIDUALLY.



KEYMAP

**DRAFT DSR
AUGUST 2018**



MATCH LINE PROPOSED PATH TO 34TH AVENUE, SEE SHEET 70

FIELD BOOKS	BM NO.	LOCATION	ELEV.	DATA	DRAWN BY	CHECKED BY	DATA	DRAWN BY	CHECKED BY	REV	DATE	DESCRIPTION	BY	REV	DATE	DESCRIPTION	BY
DESIGN				BASE			TELEPHONE										
				TOPOGRAPHY			ELECTRIC										
				PROFILE			CABLE TV										
				SANITARY SEWER			DESIGN										
				STORM SEWER			QUANTITIES										
CONTRACTOR	BASIS OF THIS DATUM			WATER			MUN. FINAL CHK.										
INSPECTOR				GAS													
CONSTRUCTION RECORD		VERTICAL DATUM				PLAN CHECK									REVISIONS		



R&M Consultants, Inc.
9101 Vanguard Drive
Anchorage, Alaska 99507
907 522 1707 voice
907 522 3404 fax
www.rmconsult.com



PROJECT MANAGEMENT AND ENGINEERING DEPARTMENT	
16-28	MIDTOWN CORRIDOR IMPROVEMENTS: DENALI STREET AREA - BENSON BLVD TO TUDOR RD 36TH AVENUE - ALTERNATIVE 2
SCALE 1:20	DATE 8/31/18 GRID 1531 1630 1631 1730 1731 SHEET 72 of 72