



MUNICIPALITY OF ANCHORAGE  
 PROJECT MANAGEMENT AND ENGINEERING  
 DEPARTMENT

**MIDTOWN CORRIDOR IMPROVEMENTS  
 DENALI STREET AREA  
 BENSON BLVD TO TUDOR RD  
 PROJECT #16-28**

SHEET INDEX	
SHEET NUMBER	SHEET TITLE
1	COVER SHEET
2	LEGEND
3-20	DENALI STREET - ALTERNATIVE 1
21-38	DENALI STREET - ALTERNATIVE 2
39-55	DENALI STREET - ALTERNATIVE 3
56-63	36TH AVENUE - ALTERNATIVE 1
64-72	36TH AVENUE - ALTERNATIVE 2

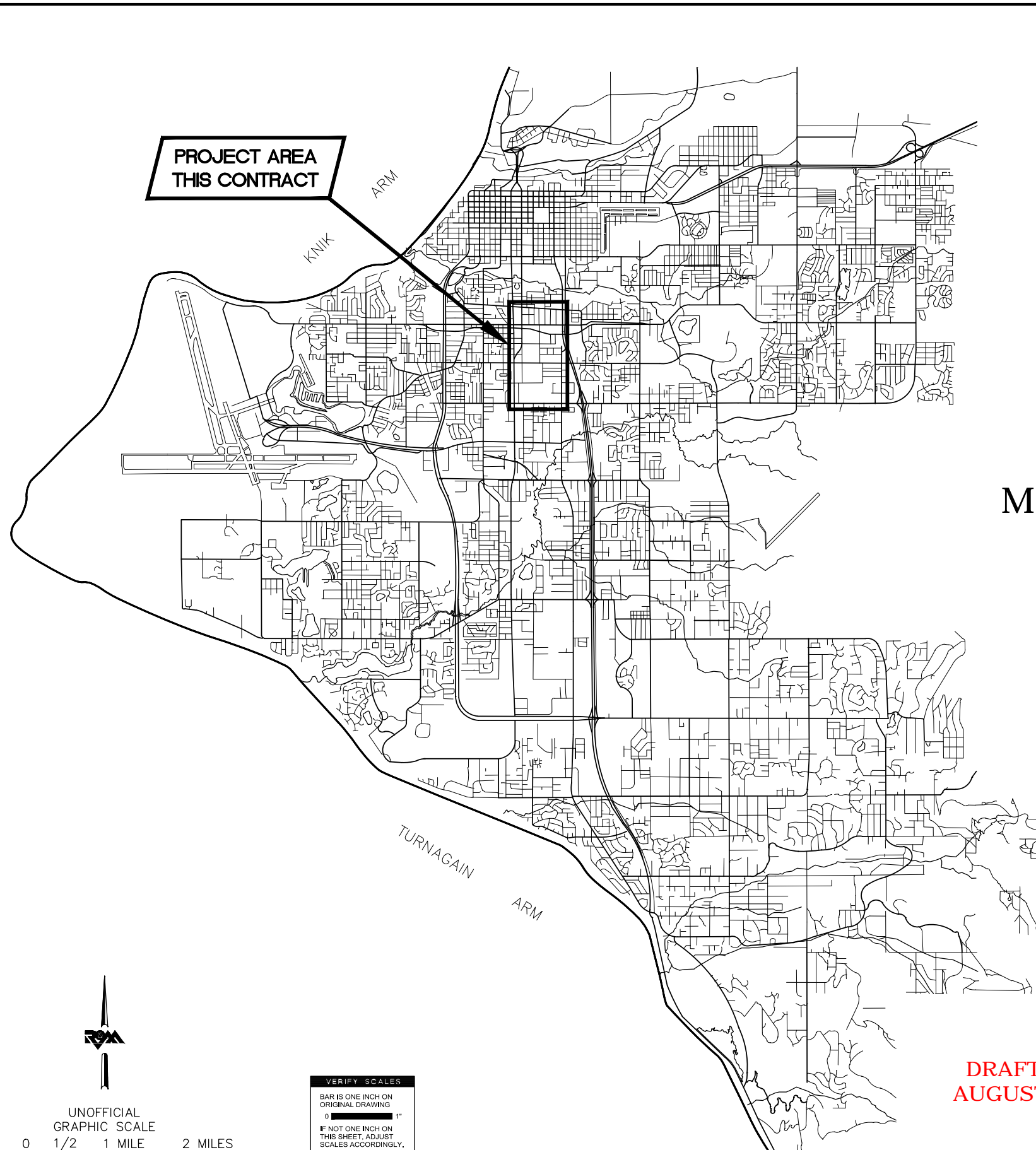
APPROVED BY:

\_\_\_\_\_  
 ETHAN BERKOWITZ  
 MAYOR

PREPARED BY:



\_\_\_\_\_  
 KENT KOHLHASE P.E.  
 ENGINEERING AND DESIGN MANAGER



**DRAFT DSR  
 AUGUST 2018**

**LEGEND**

**EXISTING**

- E — ELECTRIC (UNDERGROUND)
- OH/E — ELECTRIC (OVERHEAD)
- OH/E/T/V — ELECTRIC/COMMUNICATION (OVERHEAD)
- T — COMMUNICATION (UNDERGROUND)
- FO — FIBER OPTIC (UNDERGROUND)
- G — NATURAL GAS
- S — SANITARY SEWER
- SD — STORM DRAIN
- W — WATER
- RIGHT OF WAY
- - - - PUBLIC USE EASEMENT
- - - - EASEMENT LINE
- 100 PARCEL ID NUMBER
- ⊕ LUMINAIRE
- [ ] — UTILITY POLE
- → — GUY WIRE
- U.E. ELECTRIC PEDESTAL
- ⊕ ELECTRIC MANHOLE
- ⊠ TELEPHONE VAULT
- U.T. TELEPHONE PEDESTAL
- ⊕ TELEPHONE MANHOLE
- ⊠ c.o. SANITARY SEWER CLEANOUT
- ⊕ SANITARY SEWER MANHOLE
- ⊕ OGS OIL GREASE SEPARATOR
- ⊕ STORM DRAIN MANHOLE
- STORM DRAIN CATCH BASIN
- ⊗ WATER VALVE
- ∇ FIRE HYDRANT

**PROPOSED**

- ASPHALT PATH
- ASPHALT ROAD
- VEGETATIVE BUFFER
- CONCRETE SIDEWALK
- CONCRETE MEDIAN
- E — ELECTRIC (UNDERGROUND)
- OH/E — ELECTRIC (OVERHEAD)
- [ ] — UTILITY POLE



**BEFORE YOU DIG  
CALL FOR FREE  
UNDERGROUND  
LOCATION**

LOCATE CALL CENTER OF ALASKA  
STATEWIDE ..... 800-478-3121 WILL  
NOTIFY SUBSCRIBED UTILITIES ONLY.  
OTHER UTILITIES NEED TO BE  
CONTACTED INDIVIDUALLY.

File Location: Z:\project\2517.01 MOA PME Denali Street\Civil\ACAD\2517\_A—Legend.dwg

Plotted: 8/31/2018 9:18 AM

**DRAFT DSR  
AUGUST 2018**

FIELD BOOKS	BM NO.	LOCATION	ELEV.	DATA	DRAWN BY	CHECKED BY	DATA	DRAWN BY	CHECKED BY	REV	DATE	DESCRIPTION	BY	REV	DATE	DESCRIPTION	BY
DESIGN				BASE			TELEPHONE										
				TOPOGRAPHY			ELECTRIC										
				PROFILE			CABLE TV										
				SANITARY SEWER			DESIGN										
				STORM SEWER			QUANTITIES										
CONTRACTOR	BASIS OF THIS DATUM			WATER			MUN. FINAL CHK.										
INSPECTOR	1972 N.G.S. ADJUSTED DATUM			GAS													
CONSTRUCTION RECORD	VERTICAL DATUM			PLAN CHECK				REVISIONS				CONSULTANT		SEAL			

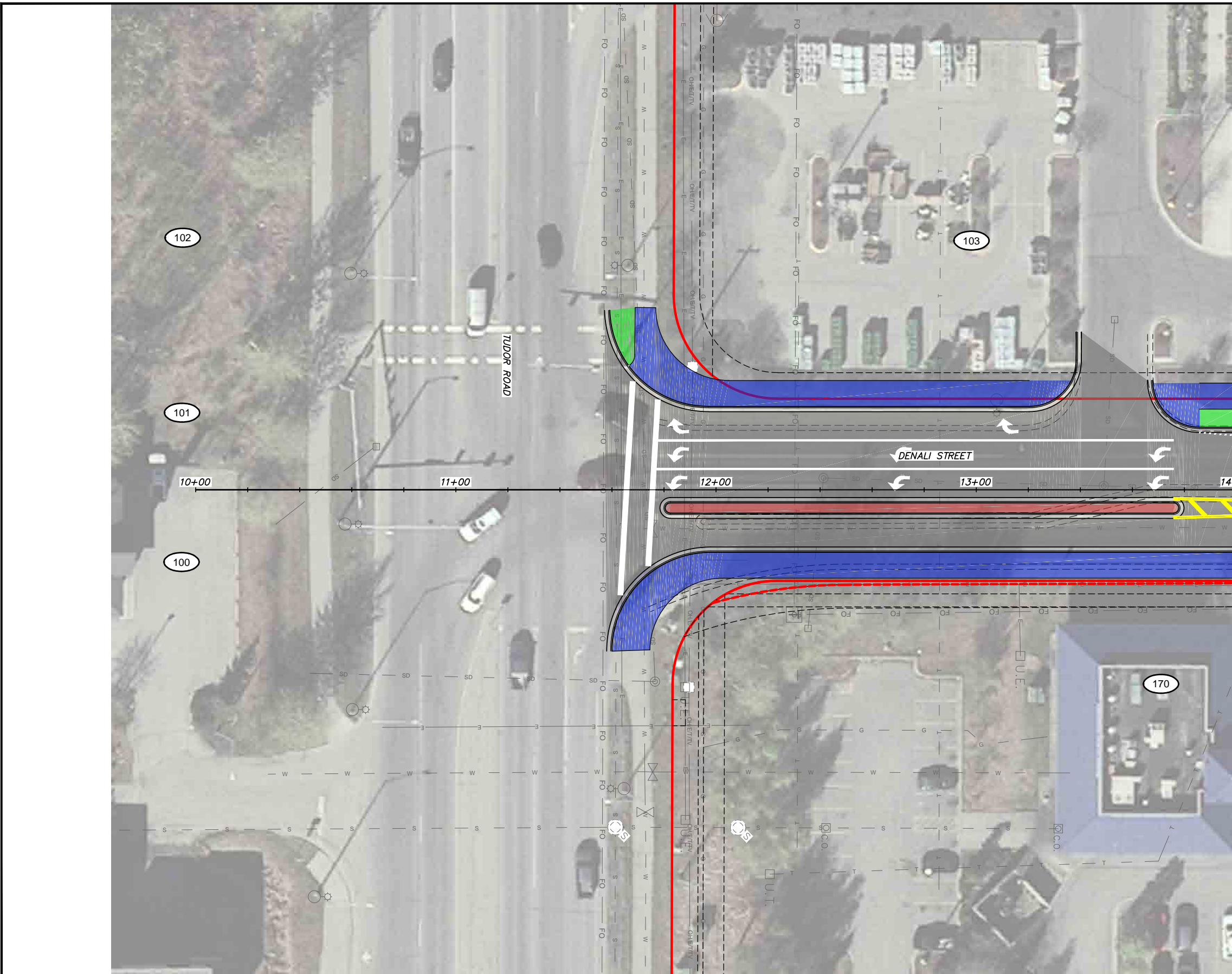
R&M Consultants, Inc.  
9101 Vanguard Drive  
Anchorage, Alaska 99507  
907 522 1707 voice  
907 522 3404 fax  
www.rmconsult.com



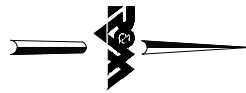
<b>PROJECT MANAGEMENT AND ENGINEERING DIVISION</b>	
16-28	MIDTOWN CORRIDOR IMPROVEMENTS: DENALI STREET AREA – BENSON BLVD TO TUDOR RD
ABBREVIATIONS, NOTES AND LEGEND	
SCALE	DATE 8/17/18 GRID 1531 1630 1631 1730 1731 SHEET 2 of 72
	ACCT. NO.

File Location: Z:\project\2517.01 MOA PME Denali Street\ACAD\2517\_Plan\_Denali\_Alt 1.dwg

Plotted: 8/31/2018 9:20 AM

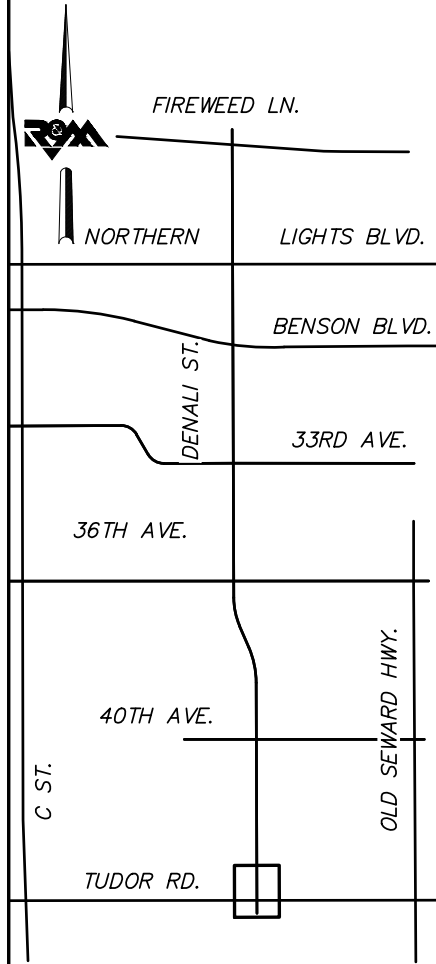


MATCH LINE DENALI STREET STA. 14+00



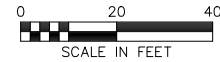
BEFORE YOU DIG CALL FOR FREE UNDERGROUND LOCATION

LOCATE CALL CENTER OF ALASKA STATEWIDE ..... 800-478-3121 WILL NOTIFY SUBSCRIBED UTILITIES ONLY. OTHER UTILITIES NEED TO BE CONTACTED INDIVIDUALLY.



KEYMAP

DRAFT DSR  
AUGUST 2018



FIELD BOOKS	BM NO.	LOCATION	ELEV.	DATA	DRAWN BY	CHECKED BY	DATA	DRAWN BY	CHECKED BY	REV	DATE	DESCRIPTION	BY	REV	DATE	DESCRIPTION	BY
				BASE			TELEPHONE										
				TOPOGRAPHY			ELECTRIC										
				PROFILE			CABLE TV										
				SANITARY SEWER			DESIGN										
				STORM SEWER			QUANTITIES										
CONTRACTOR	BASIS OF THIS DATUM			WATER			MUN. FINAL CHK.										
INSPECTOR				GAS													
CONSTRUCTION RECORD	VERTICAL DATUM			PLAN CHECK			REVISIONS										



R&M Consultants, Inc.  
9101 Vanguard Drive  
Anchorage, Alaska 99507  
907 522 1707 voice  
907 522 3404 fax  
www.rmconsult.com



PROJECT MANAGEMENT AND ENGINEERING DEPARTMENT		16-28	MIDTOWN CORRIDOR IMPROVEMENTS: DENALI STREET AREA - BENSON BLVD TO TUDOR RD			3	of 72
			DENALI STREET - ALTERNATIVE 1				
SCALE	1:20	DATE	8/31/18	GRID	1531 1630 1631 1730 1731	SHEET	
CONSTRUCTION RECORD		ACCT. NO.				of	

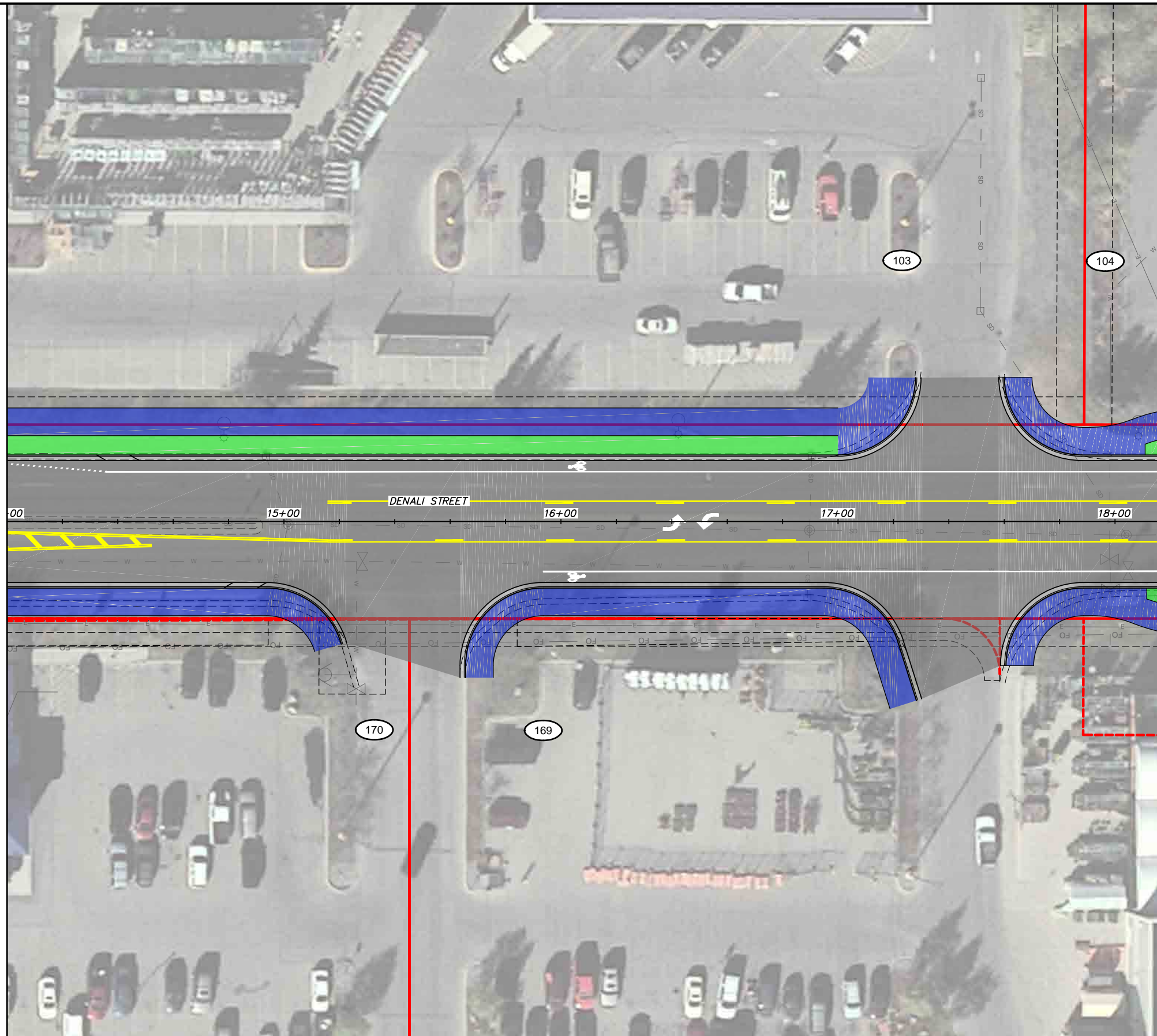
CONSULTANT

SEAL

File Location: Z:\project\2517.01 MOA PME Denali Street\Civil\ACAD\2517\_Plan\_Denali\_Alt 1.dwg

Plotted: 8/31/2018 9:20 AM

MATCH LINE DENALI STREET STA. 14+00

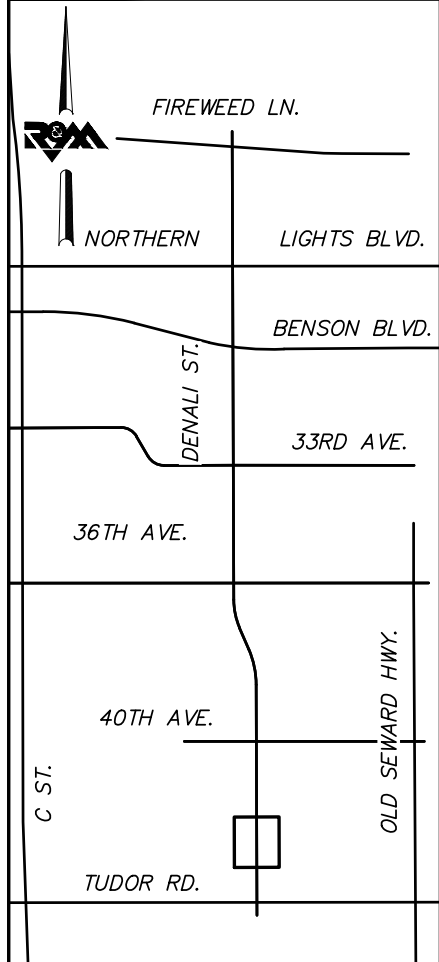


MATCH LINE DENALI STREET STA. 18+20



**BEFORE YOU DIG  
CALL FOR FREE  
UNDERGROUND  
LOCATION**

LOCATE CALL CENTER OF ALASKA  
STATEWIDE ..... 800-478-3121 WILL  
NOTIFY SUBSCRIBED UTILITIES ONLY.  
OTHER UTILITIES NEED TO BE  
CONTACTED INDIVIDUALLY.



KEYMAP

**DRAFT DSR  
AUGUST 2018**



FIELD BOOKS	BM NO.	LOCATION	ELEV.	DATA	DRAWN BY	CHECKED BY	DATA	DRAWN BY	CHECKED BY	REV	DATE	DESCRIPTION	BY	REV	DATE	DESCRIPTION	BY
				BASE			TELEPHONE										
				TOPOGRAPHY			ELECTRIC										
				PROFILE			CABLE TV										
				SANITARY SEWER			DESIGN										
				STORM SEWER			QUANTITIES										
				WATER			MUN. FINAL CHK.										
				GAS													
CONTRACTOR	BASIS OF THIS DATUM																
INSPECTOR																	
CONSTRUCTION RECORD		VERTICAL DATUM		PLAN CHECK													



R&M Consultants, Inc.  
9101 Vanguard Drive  
Anchorage, Alaska 99507  
907 522 1707 voice  
907 522 3404 fax  
www.rmconsult.com

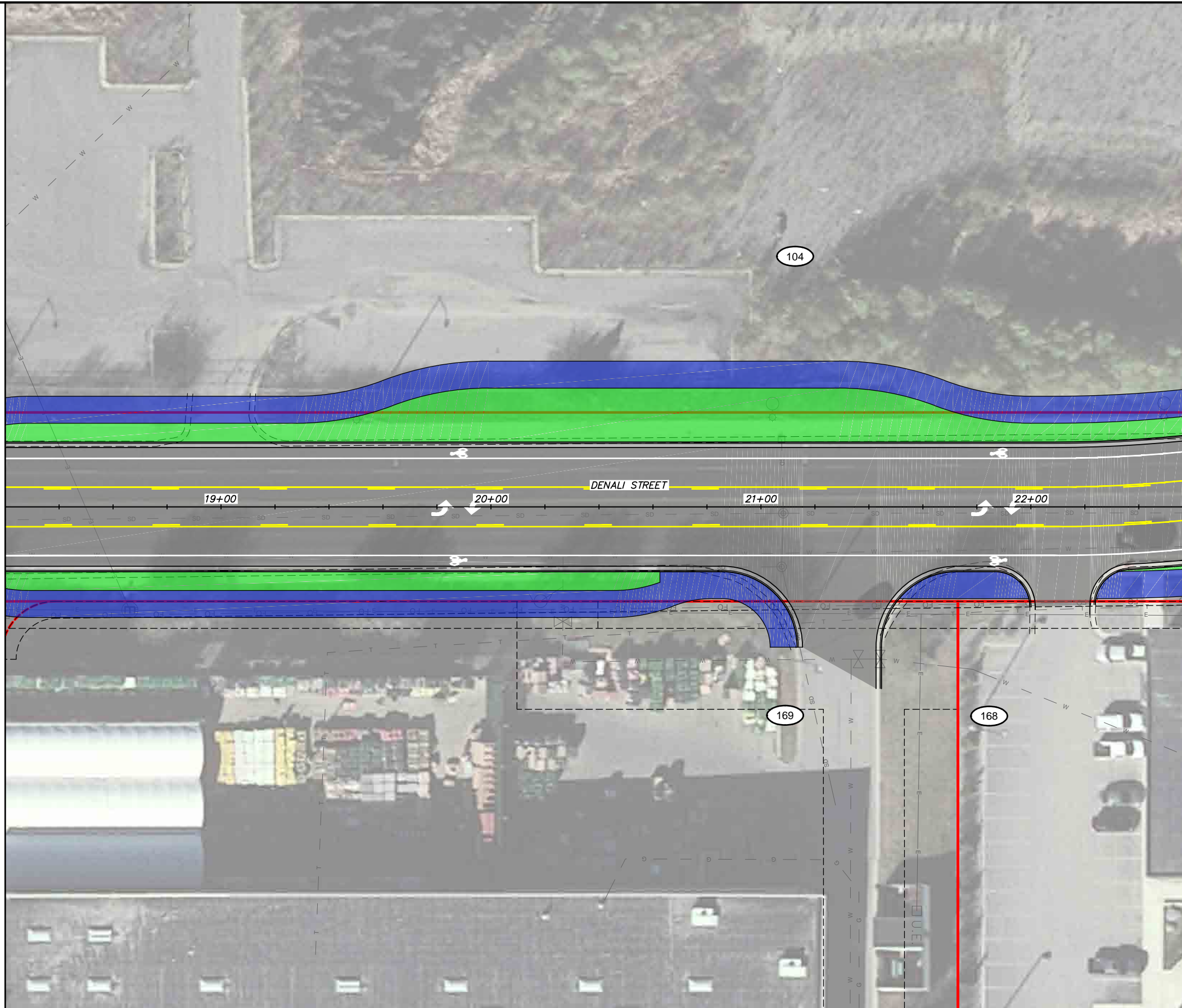


PROJECT MANAGEMENT AND ENGINEERING DEPARTMENT	
16-28	MIDTOWN CORRIDOR IMPROVEMENTS: DENALI STREET AREA - BENSON BLVD TO TUDOR RD  DENALI STREET - ALTERNATIVE 1
SCALE 1:20	DATE 8/31/18 GRID 1531 1630 1631 1730 1731 SHEET 4 of 72

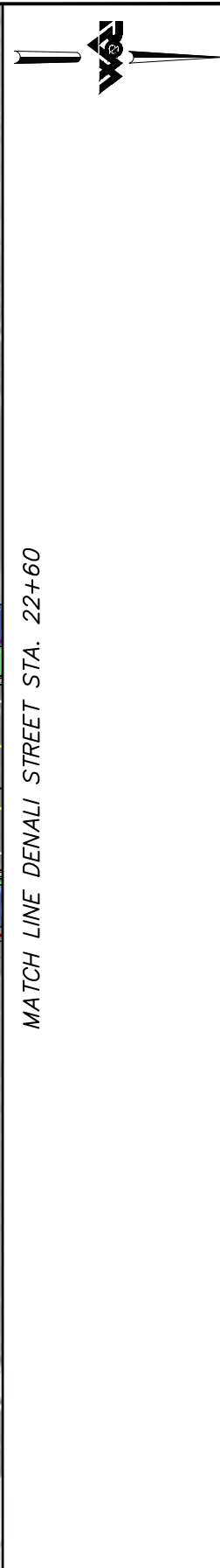
File Location: Z:\project\2517.01 MOA PME Denali Street\Civil\ACAD\2517\_Plan Denali Alt 1.dwg

Plotted: 8/31/2018 9:20 AM

MATCH LINE DENALI STREET STA. 18+20



MATCH LINE DENALI STREET STA. 22+60



**BEFORE YOU DIG  
CALL FOR FREE  
UNDERGROUND  
LOCATION**

LOCATE CALL CENTER OF ALASKA  
STATEWIDE ..... 800-478-3121 WILL  
NOTIFY SUBSCRIBED UTILITIES ONLY.  
OTHER UTILITIES NEED TO BE  
CONTACTED INDIVIDUALLY.

**KEYMAP**

**DRAFT DSR  
AUGUST 2018**



FIELD BOOKS	BM NO.	LOCATION	ELEV.	DATA	DRAWN BY	CHECKED BY	DATA	DRAWN BY	CHECKED BY	REV	DATE	DESCRIPTION	BY	REV	DATE	DESCRIPTION	BY
DESIGN				BASE TOPOGRAPHY PROFILE SANITARY SEWER STORM SEWER WATER GAS			TELEPHONE ELECTRIC CABLE TV DESIGN QUANTITIES MUN. FINAL CHK.										
CONTRACTOR	BASIS OF THIS DATUM																
INSPECTOR																	
CONSTRUCTION RECORD		VERTICAL DATUM					PLAN CHECK										
																	REVISIONS

R&M Consultants, Inc.  
9101 Vanguard Drive  
Anchorage, Alaska 99507  
907 522 1707 voice  
907 522 3404 fax  
www.rmconsult.com

SEAL

PROJECT MANAGEMENT AND  
ENGINEERING DEPARTMENT

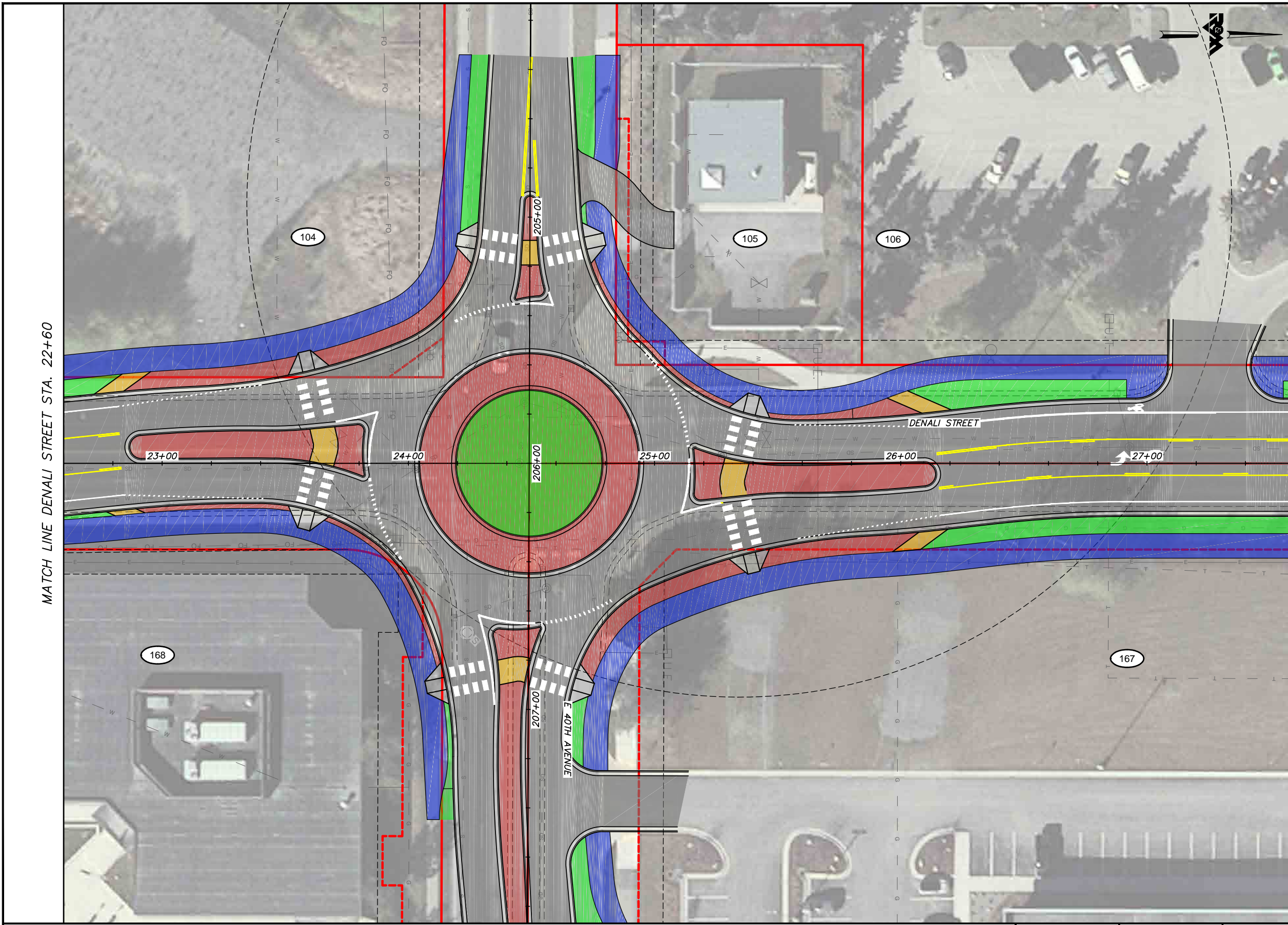
16-28 MIDTOWN CORRIDOR IMPROVEMENTS:  
DENALI STREET AREA - BENSON  
BLVD TO TUDOR RD

DENALI STREET - ALTERNATIVE 1

SCALE 1:20 DATE 8/31/18 GRID 1531 1630 1631  
ACCT. NO. 1730 1731 SHEET 5 of 72

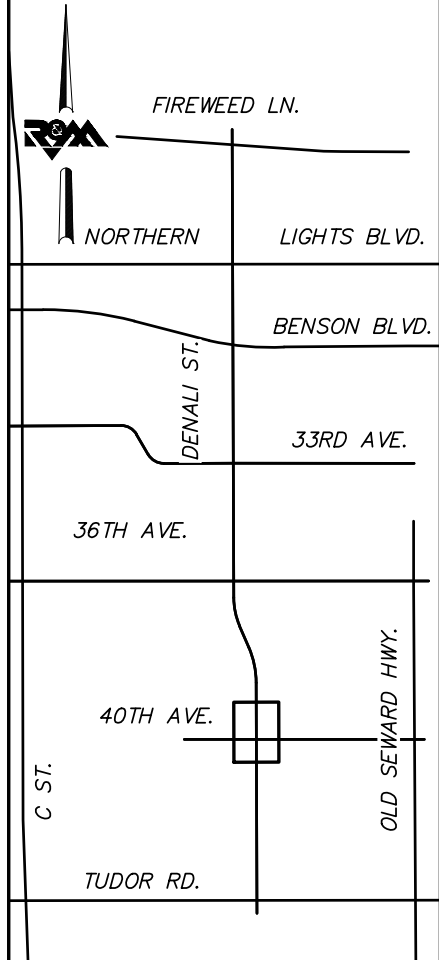
File Location: Z:\project\2517.01 MOA PME Denali Street\Civil\ACAD\2517\_Plan\_Denali\_Alt\_1.dwg

Plotted: 8/31/2018 9:20 AM



**BEFORE YOU DIG  
CALL FOR FREE  
UNDERGROUND  
LOCATION**

LOCATE CALL CENTER OF ALASKA  
STATEWIDE ..... 800-478-3121 WILL  
NOTIFY SUBSCRIBED UTILITIES ONLY.  
OTHER UTILITIES NEED TO BE  
CONTACTED INDIVIDUALLY.



KEYMAP

**DRAFT DSR  
AUGUST 2018**



FIELD BOOKS	BM NO.	LOCATION	ELEV.	DATA	DRAWN BY	CHECKED BY	DATA	DRAWN BY	CHECKED BY	REV	DATE	DESCRIPTION	BY	REV	DATE	DESCRIPTION	BY
DESIGN				BASE TOPOGRAPHY PROFILE SANITARY SEWER STORM SEWER WATER GAS			TELEPHONE ELECTRIC CABLE TV DESIGN QUANTITIES MUN. FINAL CHK.										
CONTRACTOR	BASIS OF THIS DATUM																
INSPECTOR	VERTICAL DATUM																
CONSTRUCTION RECORD	PLAN CHECK																
										REVISIONS		CONSULTANT		SEAL			



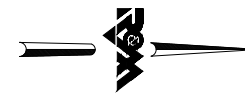
R&M Consultants, Inc.  
9101 Vanguard Drive  
Anchorage, Alaska 99507  
907 522 1707 voice  
907 522 3404 fax  
www.rmconsult.com



PROJECT MANAGEMENT AND ENGINEERING DEPARTMENT	
16-28	MIDTOWN CORRIDOR IMPROVEMENTS: DENALI STREET AREA - BENSON BLVD TO TUDOR RD  DENALI STREET - ALTERNATIVE 1
SCALE 1:20	DATE 8/31/18 GRID 1531 1630 1631 1730 1731 SHEET 6 of 72

File Location: Z:\project\2517.01 MOA PME Denali Street\Civil\ACAD\2517\_Plan Denali Alt 1.dwg

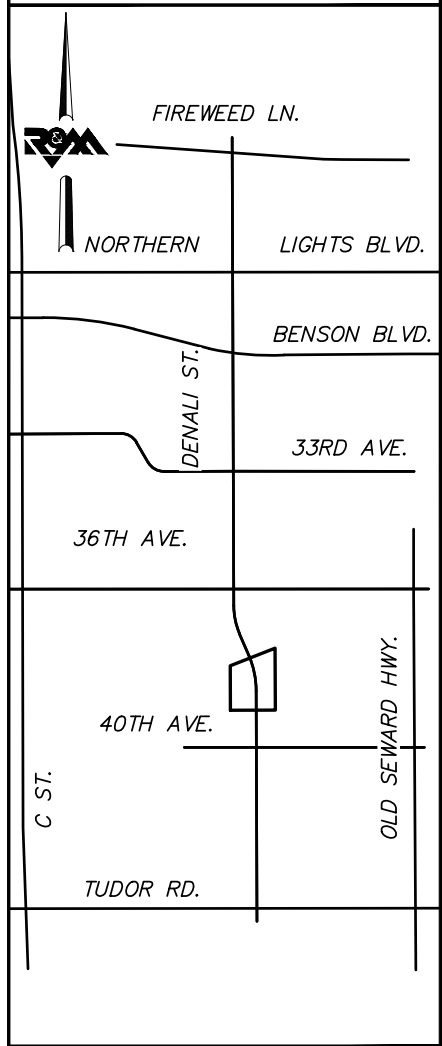
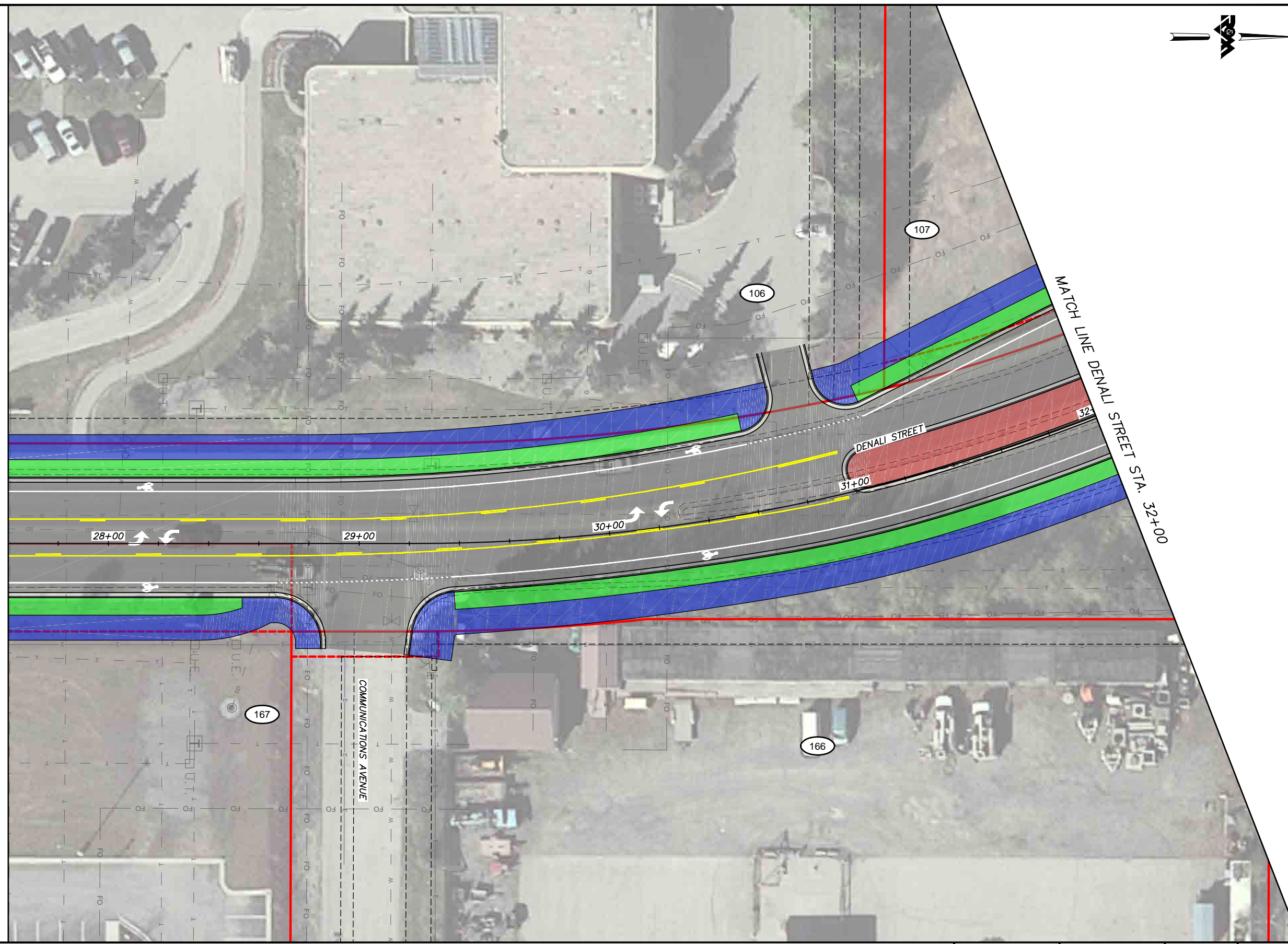
Plotted: 8/31/2018 9:20 AM



**BEFORE YOU DIG  
CALL FOR FREE  
UNDERGROUND  
LOCATION**

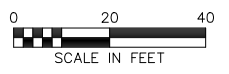
LOCATE CALL CENTER OF ALASKA  
STATEWIDE ..... 800-478-3121 WILL  
NOTIFY SUBSCRIBED UTILITIES ONLY.  
OTHER UTILITIES NEED TO BE  
CONTACTED INDIVIDUALLY.

MATCH LINE DENALI STREET STA. 27+60



**KEYMAP**

**DRAFT DSR  
AUGUST 2018**



FIELD BOOKS	BM NO.	LOCATION	ELEV.	DATA	DRAWN BY	CHECKED BY	DATA	DRAWN BY	CHECKED BY	REV	DATE	DESCRIPTION	BY	REV	DATE	DESCRIPTION	BY
				BASE			TELEPHONE										
				TOPOGRAPHY			ELECTRIC										
				PROFILE			CABLE TV										
				SANITARY SEWER			DESIGN										
				STORM SEWER			QUANTITIES										
				WATER			MUN. FINAL CHK.										
				GAS													
CONTRACTOR	BASIS OF THIS DATUM																
INSPECTOR																	
CONSTRUCTION RECORD		VERTICAL DATUM				PLAN CHECK									REVISIONS		



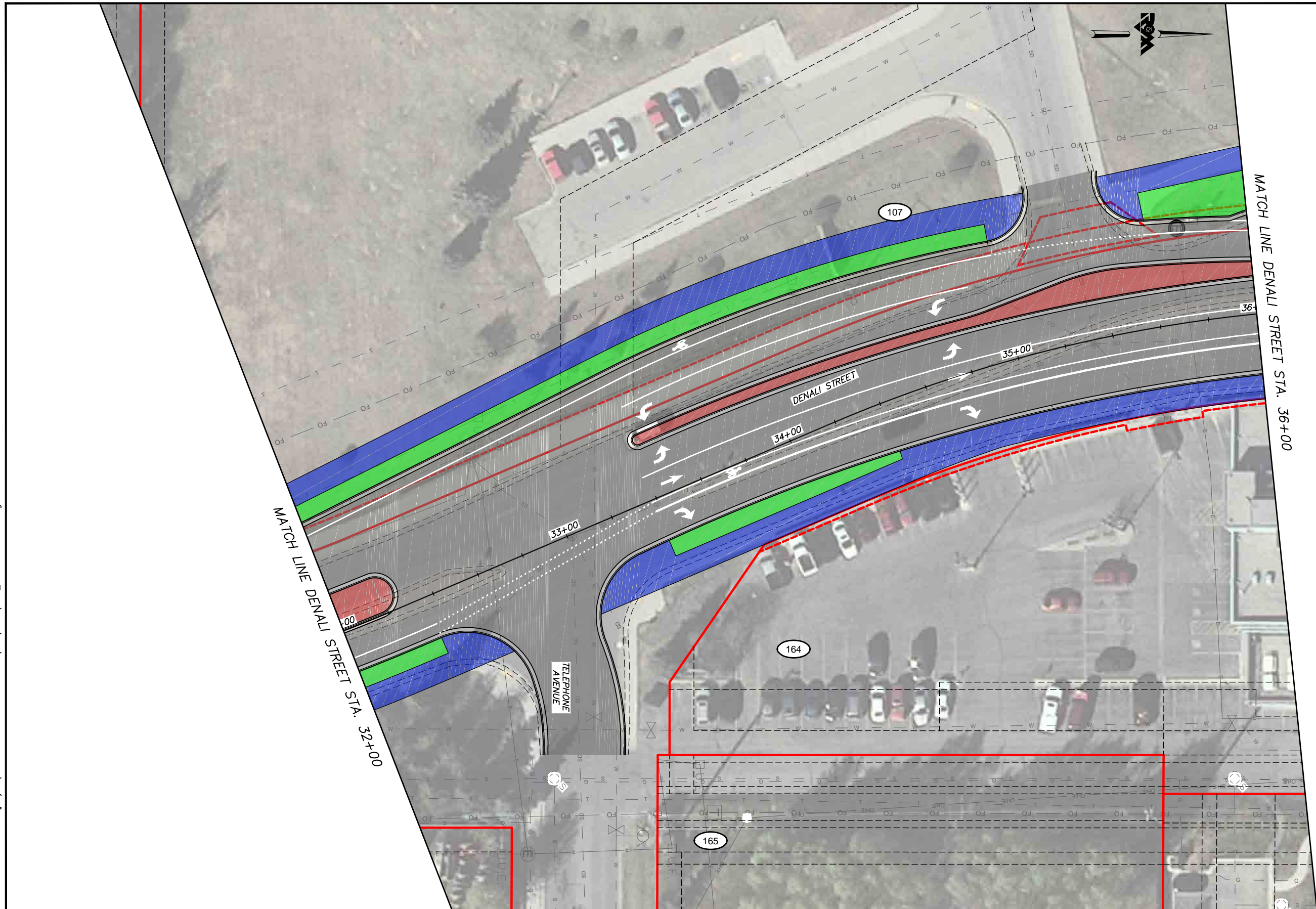
R&M Consultants, Inc.  
9101 Vanguard Drive  
Anchorage, Alaska 99507  
907 522 1707 voice  
907 522 3404 fax  
www.rmconsult.com



PROJECT MANAGEMENT AND ENGINEERING DEPARTMENT	
16-28	MIDTOWN CORRIDOR IMPROVEMENTS: DENALI STREET AREA - BENSON BLVD TO TUDOR RD  DENALI STREET - ALTERNATIVE 1
SCALE 1:20	DATE 8/31/18 GRID 1531 1630 1631 1730 1731 SHEET 7 of 72

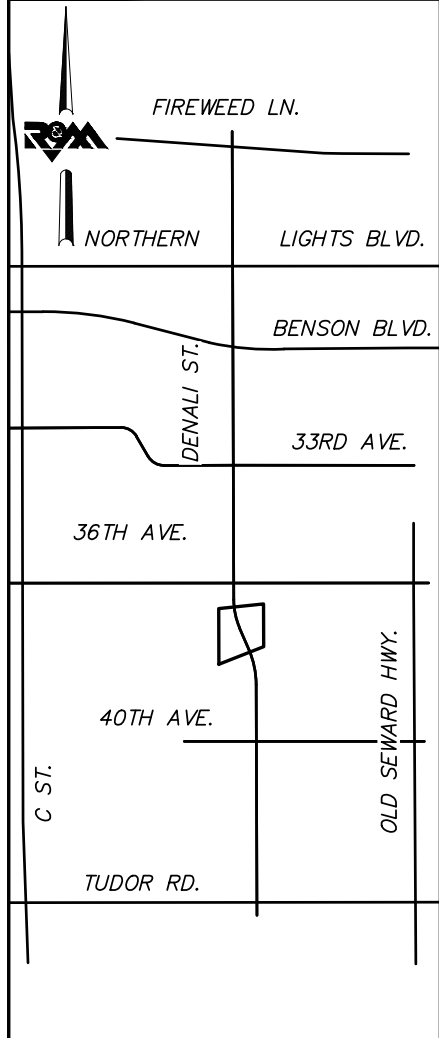
File Location: Z:\project\2517.01 MOA PME Denali Street\Civil\ACAD\2517\_Plan\_Denali\_Alt\_1.dwg

Plotted: 8/31/2018 9:21 AM



**BEFORE YOU DIG  
CALL FOR FREE  
UNDERGROUND  
LOCATION**

LOCATE CALL CENTER OF ALASKA  
STATEWIDE ..... 800-478-3121 WILL  
NOTIFY SUBSCRIBED UTILITIES ONLY.  
OTHER UTILITIES NEED TO BE  
CONTACTED INDIVIDUALLY.



**KEYMAP**

**DRAFT DSR  
AUGUST 2018**



FIELD BOOKS	BM NO.	LOCATION	ELEV.	DATA	DRAWN BY	CHECKED BY	DATA	DRAWN BY	CHECKED BY	REV	DATE	DESCRIPTION	BY	REV	DATE	DESCRIPTION	BY
DESIGN				BASE			TELEPHONE										
				TOPOGRAPHY			ELECTRIC										
				PROFILE			CABLE TV										
				SANITARY SEWER			DESIGN										
				STORM SEWER			QUANTITIES										
CONTRACTOR	BASIS OF THIS DATUM			WATER			MUN. FINAL CHK.										
INSPECTOR				GAS													
CONSTRUCTION RECORD		VERTICAL DATUM				PLAN CHECK									REVISIONS		



R&M Consultants, Inc.  
9101 Vanguard Drive  
Anchorage, Alaska 99507  
907 522 1707 voice  
907 522 3404 fax  
www.rmconsult.com



PROJECT MANAGEMENT AND ENGINEERING DEPARTMENT	
16-28	MIDTOWN CORRIDOR IMPROVEMENTS: DENALI STREET AREA - BENSON BLVD TO TUDOR RD  DENALI STREET - ALTERNATIVE 1
SCALE 1:20	DATE 8/31/18 GRID 1531 1630 1631 ACCT. NO. 1730 1731 SHEET 8 of 72
CONSULTANT	SEAL

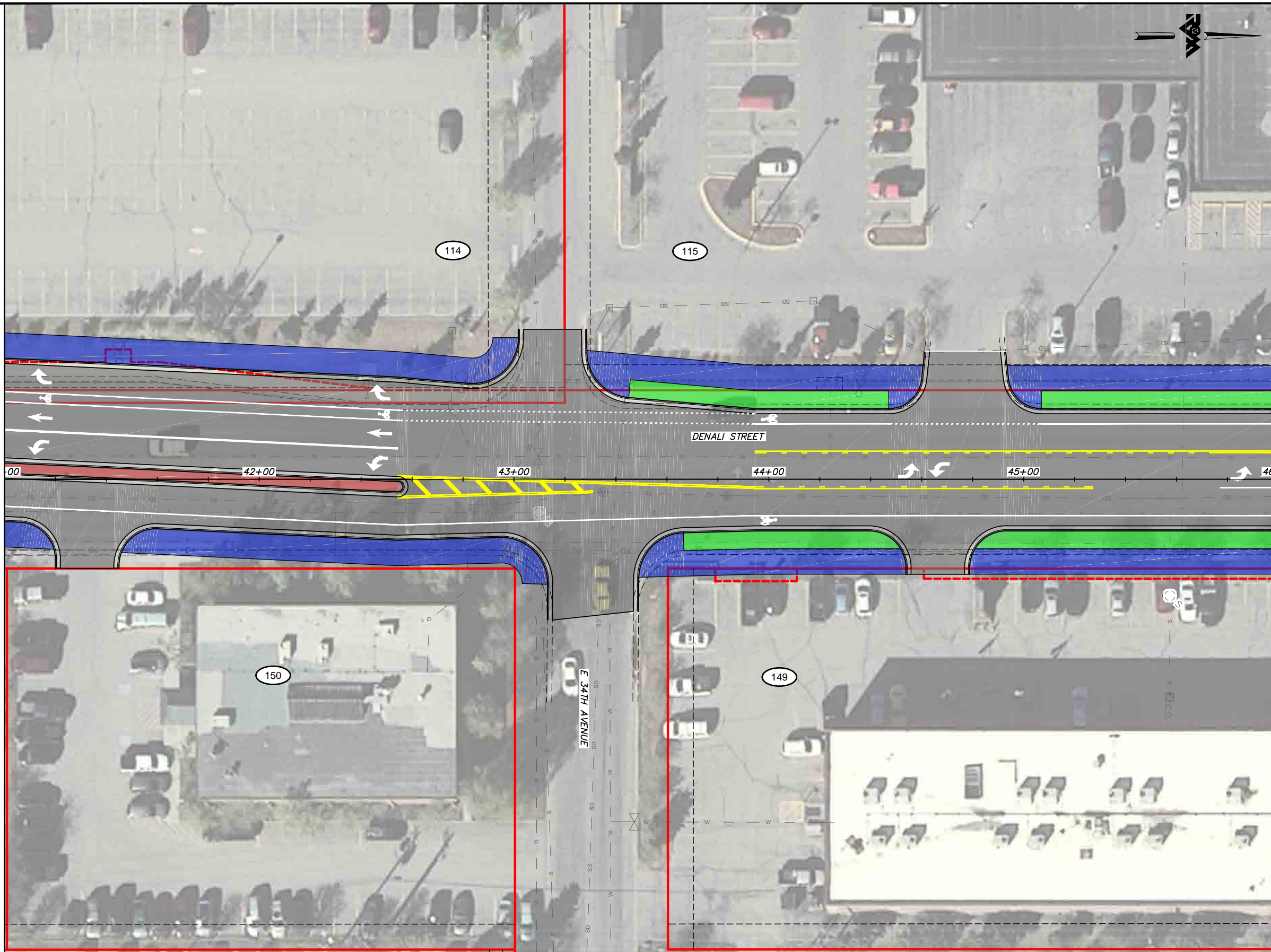




File Location: Z:\project\2517.01 MOA PME Denali Street\Civil\ACAD\2517\_Plan Denali Alt 1.dwg

Plotted: 8/31/2018 9:21 AM

MATCH LINE DENALI STREET STA. 41+00

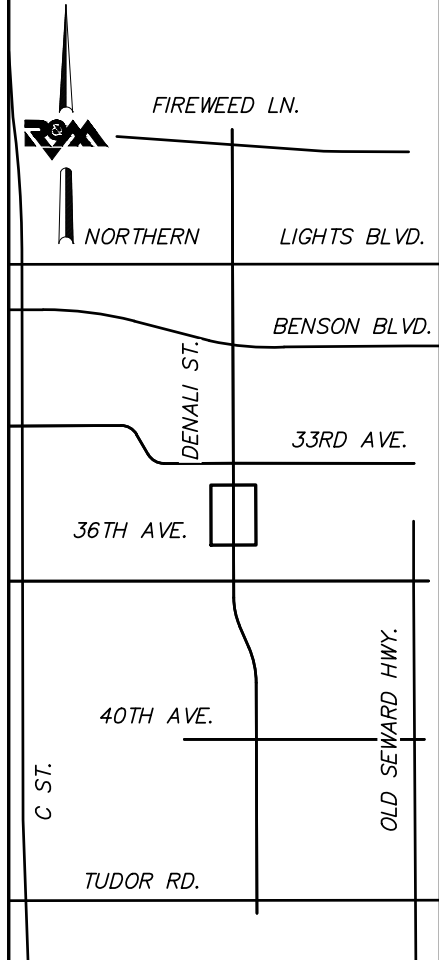


MATCH LINE DENALI STREET STA. 46+00



BEFORE YOU DIG  
CALL FOR FREE  
UNDERGROUND  
LOCATION

LOCATE CALL CENTER OF ALASKA  
STATEWIDE ..... 800-478-3121 WILL  
NOTIFY SUBSCRIBED UTILITIES ONLY.  
OTHER UTILITIES NEED TO BE  
CONTACTED INDIVIDUALLY.



KEYMAP

DRAFT DSR  
AUGUST 2018



FIELD BOOKS	BM NO.	LOCATION	ELEV.	DATA	DRAWN BY	CHECKED BY	DATA	DRAWN BY	CHECKED BY	REV	DATE	DESCRIPTION	BY	REV	DATE	DESCRIPTION	BY	
				BASE			TELEPHONE											
				TOPOGRAPHY			ELECTRIC											
				PROFILE			CABLE TV											
				SANITARY SEWER			DESIGN											
				STORM SEWER			QUANTITIES											
				WATER			MUN. FINAL CHK.											
				GAS														
CONTRACTOR	BASIS OF THIS DATUM																	
INSPECTOR																		
CONSTRUCTION RECORD		VERTICAL DATUM				PLAN CHECK										REVISIONS		

R&M Consultants, Inc.  
9101 Vanguard Drive  
Anchorage, Alaska 99507  
907 522 1707 voice  
907 522 3404 fax  
www.rmconsult.com

SEAL



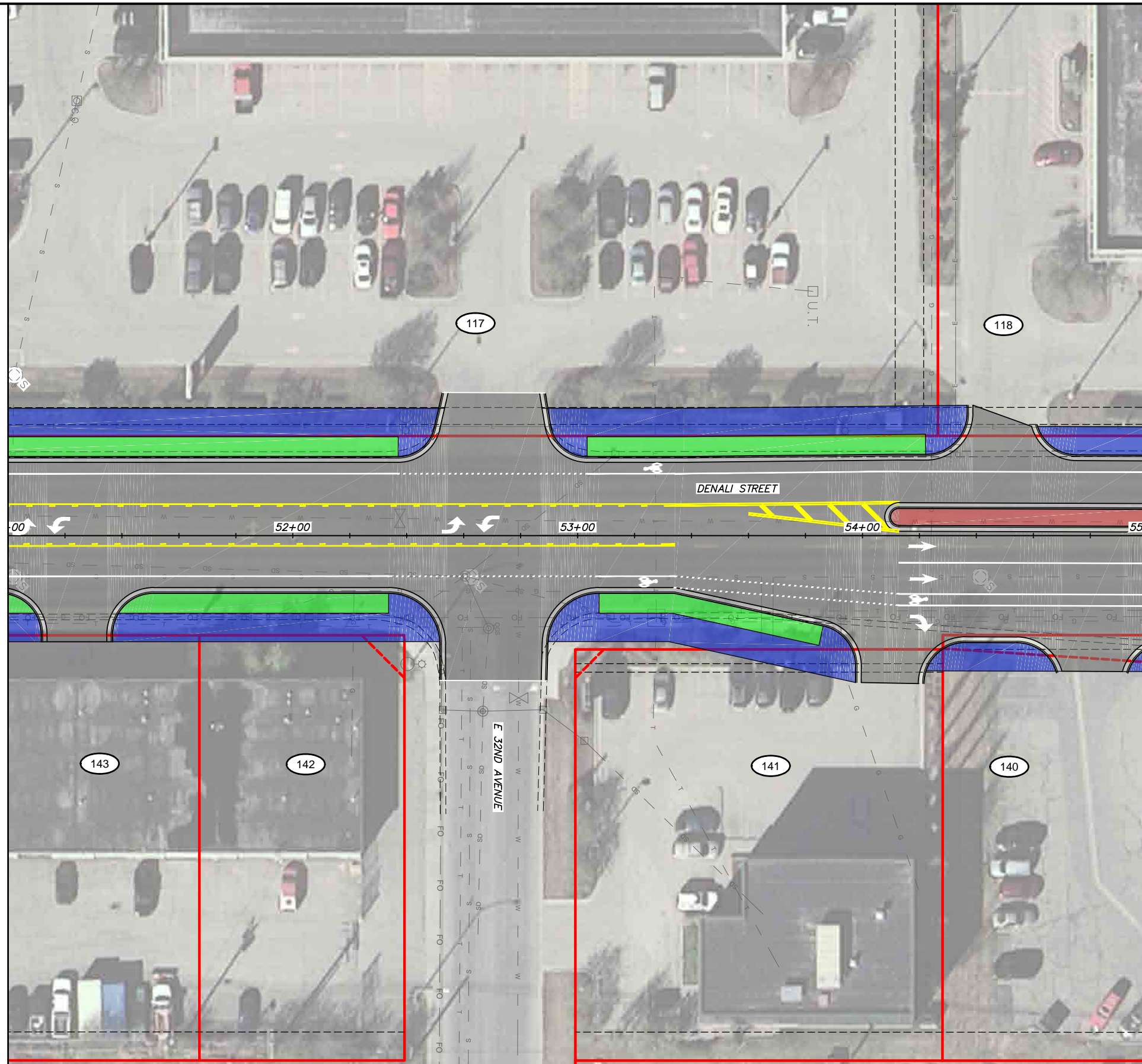
PROJECT MANAGEMENT AND  
ENGINEERING DEPARTMENT

16-28 MIDTOWN CORRIDOR IMPROVEMENTS:  
DENALI STREET AREA - BENSON  
BLVD TO TUDOR RD  
DENALI STREET - ALTERNATIVE 1

SCALE 1:20 DATE 8/31/18 GRID 1531 1630 1631  
ACCT. NO. 1730 1731 SHEET 10 of 72



MATCH LINE DENALI STREET STA. 51+00

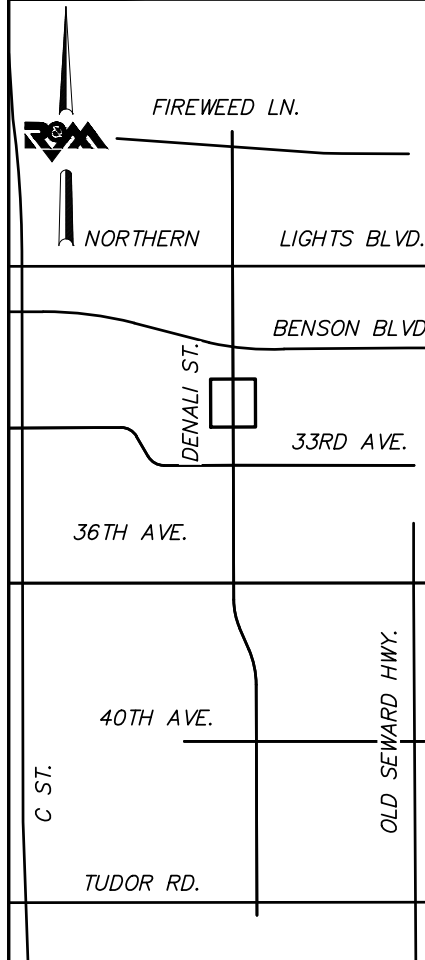


MATCH LINE DENALI STREET STA. 55+00



BEFORE YOU DIG  
CALL FOR FREE  
UNDERGROUND  
LOCATION

LOCATE CALL CENTER OF ALASKA  
STATEWIDE ..... 800-478-3121 WILL  
NOTIFY SUBSCRIBED UTILITIES ONLY.  
OTHER UTILITIES NEED TO BE  
CONTACTED INDIVIDUALLY.



KEYMAP

DRAFT DSR  
AUGUST 2018



FIELD BOOKS	BM NO.	LOCATION	ELEV.	DATA	DRAWN BY	CHECKED BY	DATA	DRAWN BY	CHECKED BY	REV	DATE	DESCRIPTION	BY	REV	DATE	DESCRIPTION	BY
				BASE			TELEPHONE										
				TOPOGRAPHY			ELECTRIC										
				PROFILE			CABLE TV										
				SANITARY SEWER			DESIGN										
				STORM SEWER			QUANTITIES										
				WATER			MUN. FINAL CHK.										
				GAS													
CONTRACTOR	BASIS OF THIS DATUM																
INSPECTOR	VERTICAL DATUM						PLAN CHECK										
CONSTRUCTION RECORD																	
										REVISIONS		CONSULTANT		SEAL			



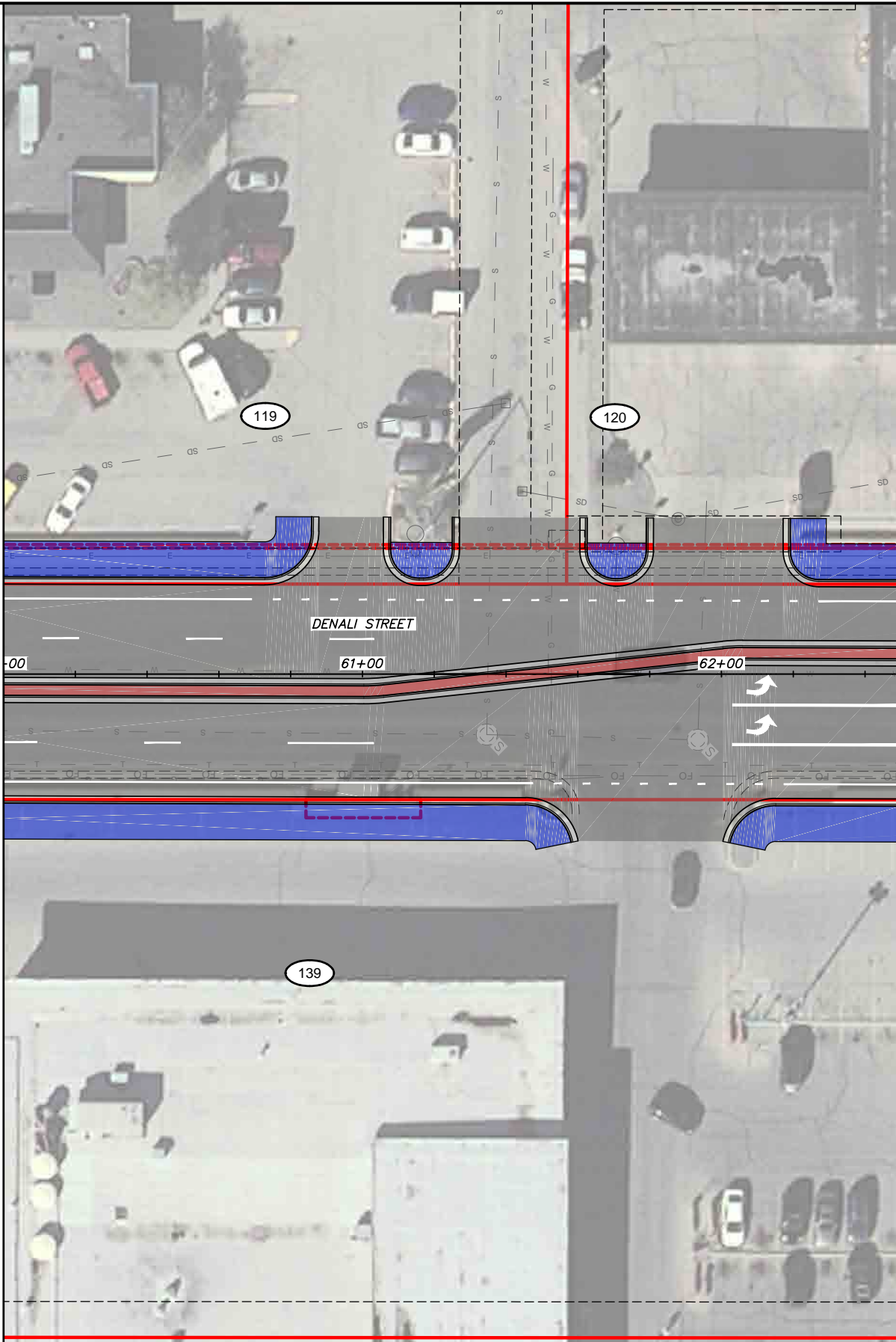
R&M Consultants, Inc.  
9101 Vanguard Drive  
Anchorage, Alaska 99507  
907 522 1707 voice  
907 522 3404 fax  
www.rmconsult.com



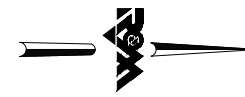
PROJECT MANAGEMENT AND ENGINEERING DEPARTMENT	
16-28	MIDTOWN CORRIDOR IMPROVEMENTS: DENALI STREET AREA - BENSON BLVD TO TUDOR RD DENALI STREET - ALTERNATIVE 1
SCALE 1:20	DATE 8/31/18 GRID 1531 1630 1631 1730 1731 SHEET 12 of 72



MATCH LINE DENALI STREET STA. 60+00

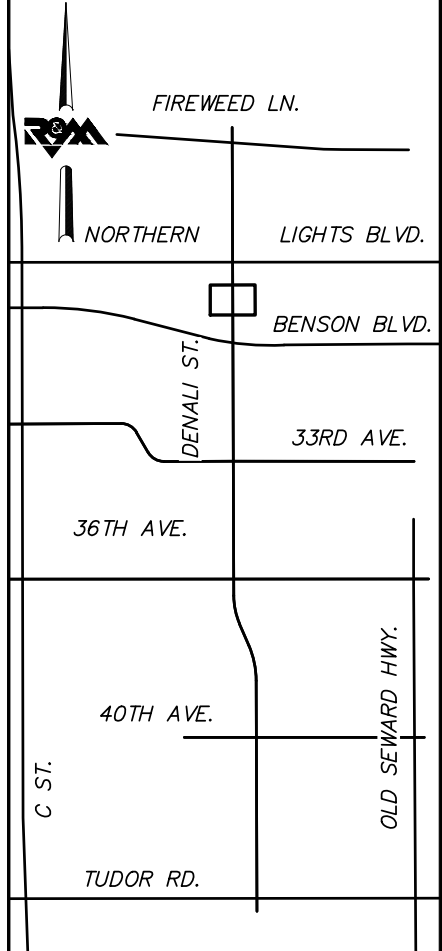


MATCH LINE DENALI STREET STA. 62+50



**BEFORE YOU DIG  
CALL FOR FREE  
UNDERGROUND  
LOCATION**

LOCATE CALL CENTER OF ALASKA  
STATEWIDE ..... 800-478-3121 WILL  
NOTIFY SUBSCRIBED UTILITIES ONLY.  
OTHER UTILITIES NEED TO BE  
CONTACTED INDIVIDUALLY.



**KEYMAP**

**DRAFT DSR  
AUGUST 2018**



FIELD BOOKS	BM NO.	LOCATION	ELEV.	DATA	DRAWN BY	CHECKED BY	DATA	DRAWN BY	CHECKED BY	REV	DATE	DESCRIPTION	BY	REV	DATE	DESCRIPTION	BY
DESIGN				BASE TOPOGRAPHY PROFILE SANITARY SEWER STORM SEWER WATER GAS			TELEPHONE ELECTRIC CABLE TV DESIGN QUANTITIES MUN. FINAL CHK.										
CONTRACTOR	BASIS OF THIS DATUM																
INSPECTOR																	
CONSTRUCTION RECORD		VERTICAL DATUM					PLAN CHECK										
																	REVISIONS



R&M Consultants, Inc.  
9101 Vanguard Drive  
Anchorage, Alaska 99507  
907 522 1707 voice  
907 522 3404 fax  
www.rmconsult.com



PROJECT MANAGEMENT AND ENGINEERING DEPARTMENT	
16-28	MIDTOWN CORRIDOR IMPROVEMENTS: DENALI STREET AREA - BENSON BLVD TO TUDOR RD  DENALI STREET - ALTERNATIVE 1
SCALE 1:20	DATE 8/31/18 GRID 1531 1630 1631 1730 1731
ACCT. NO.	SHEET 14 of 72

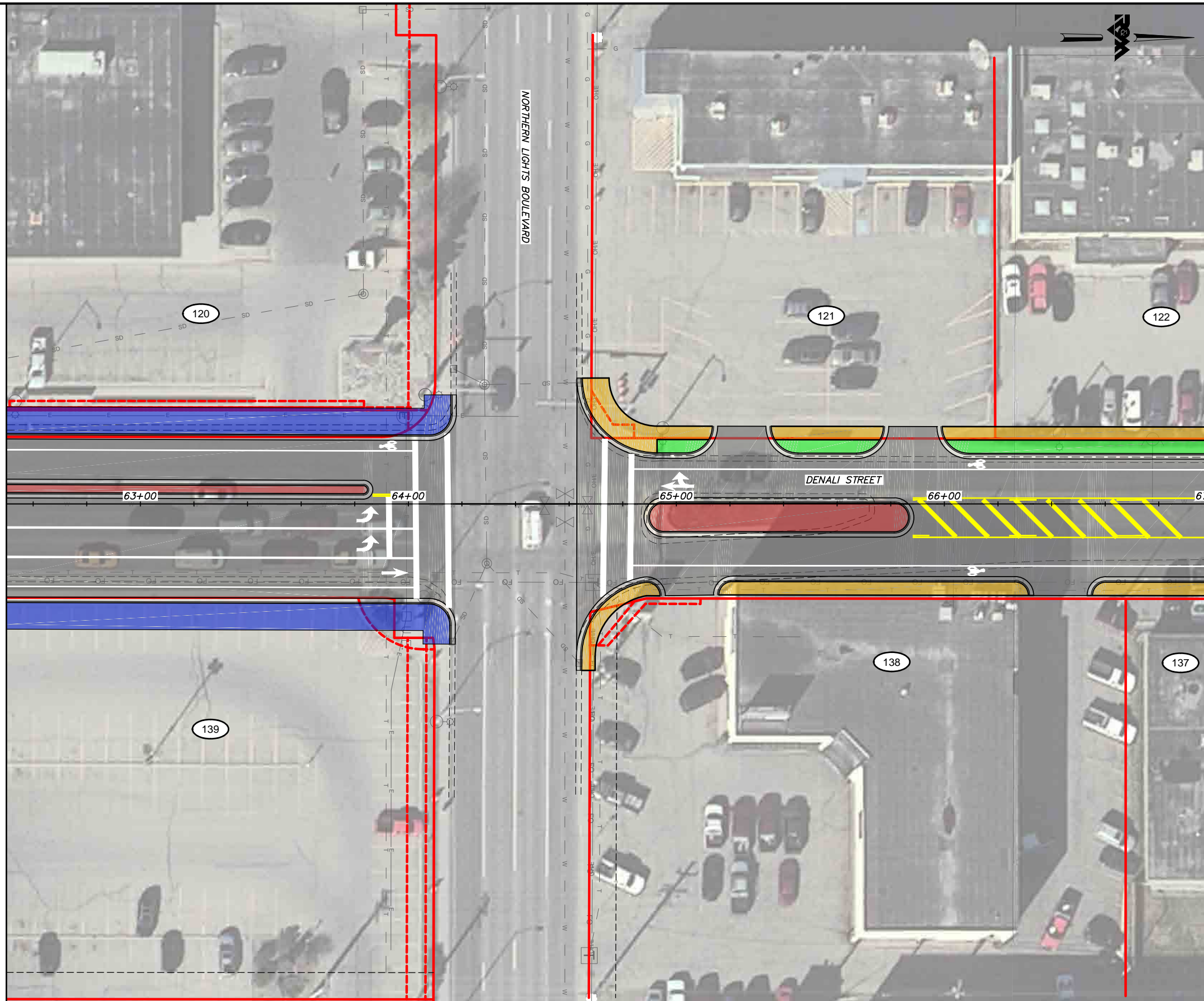
CONSULTANT

SEAL

File Location: Z:\project\2517.01 MOA PME Denali Street\Civil\ACAD\2517\_Plan Denali Alt 1.dwg

Plotted: 8/31/2018 9:21 AM

MATCH LINE DENALI STREET STA. 62+50

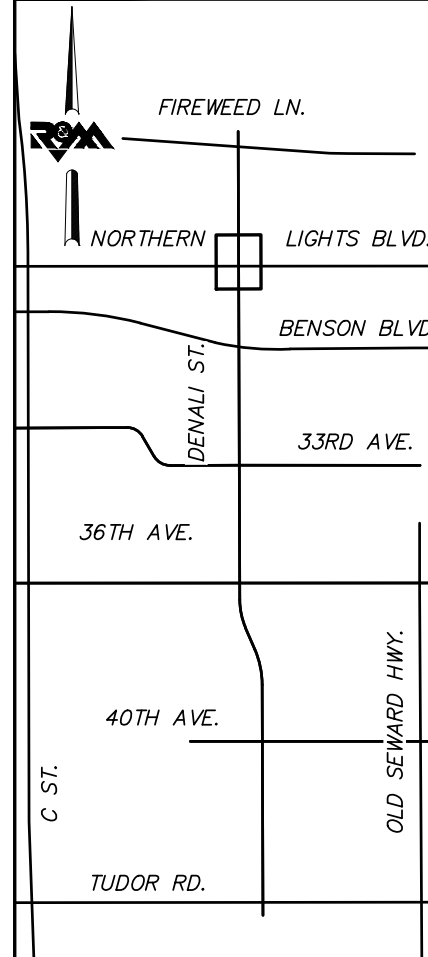


MATCH LINE DENALI STREET STA. 67+00



**BEFORE YOU DIG  
CALL FOR FREE  
UNDERGROUND  
LOCATION**

LOCATE CALL CENTER OF ALASKA  
STATEWIDE ..... 800-478-3121 WILL  
NOTIFY SUBSCRIBED UTILITIES ONLY.  
OTHER UTILITIES NEED TO BE  
CONTACTED INDIVIDUALLY.



**KEYMAP**

**DRAFT DSR  
AUGUST 2018**



SCALE IN FEET

FIELD BOOKS	BM NO.	LOCATION	ELEV.	DATA	DRAWN BY	CHECKED BY	DATA	DRAWN BY	CHECKED BY	REV	DATE	DESCRIPTION	BY	REV	DATE	DESCRIPTION	BY		
				BASE			TELEPHONE												
				TOPOGRAPHY			ELECTRIC												
				PROFILE			CABLE TV												
				SANITARY SEWER			DESIGN												
				STORM SEWER			QUANTITIES												
				WATER			MUN. FINAL CHK.												
				GAS															
CONTRACTOR	BASIS OF THIS DATUM																		
INSPECTOR																			
CONSTRUCTION RECORD	VERTICAL DATUM			PLAN CHECK				REVISIONS				CONSULTANT				SEAL			

R&M Consultants, Inc.  
9101 Vanguard Drive  
Anchorage, Alaska 99507  
907 522 1707 voice  
907 522 3404 fax  
www.rmconsult.com



PROJECT MANAGEMENT AND  
ENGINEERING DEPARTMENT

16-28 MIDTOWN CORRIDOR IMPROVEMENTS:  
DENALI STREET AREA - BENSON  
BLVD TO TUDOR RD

DENALI STREET - ALTERNATIVE 1

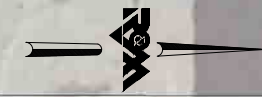
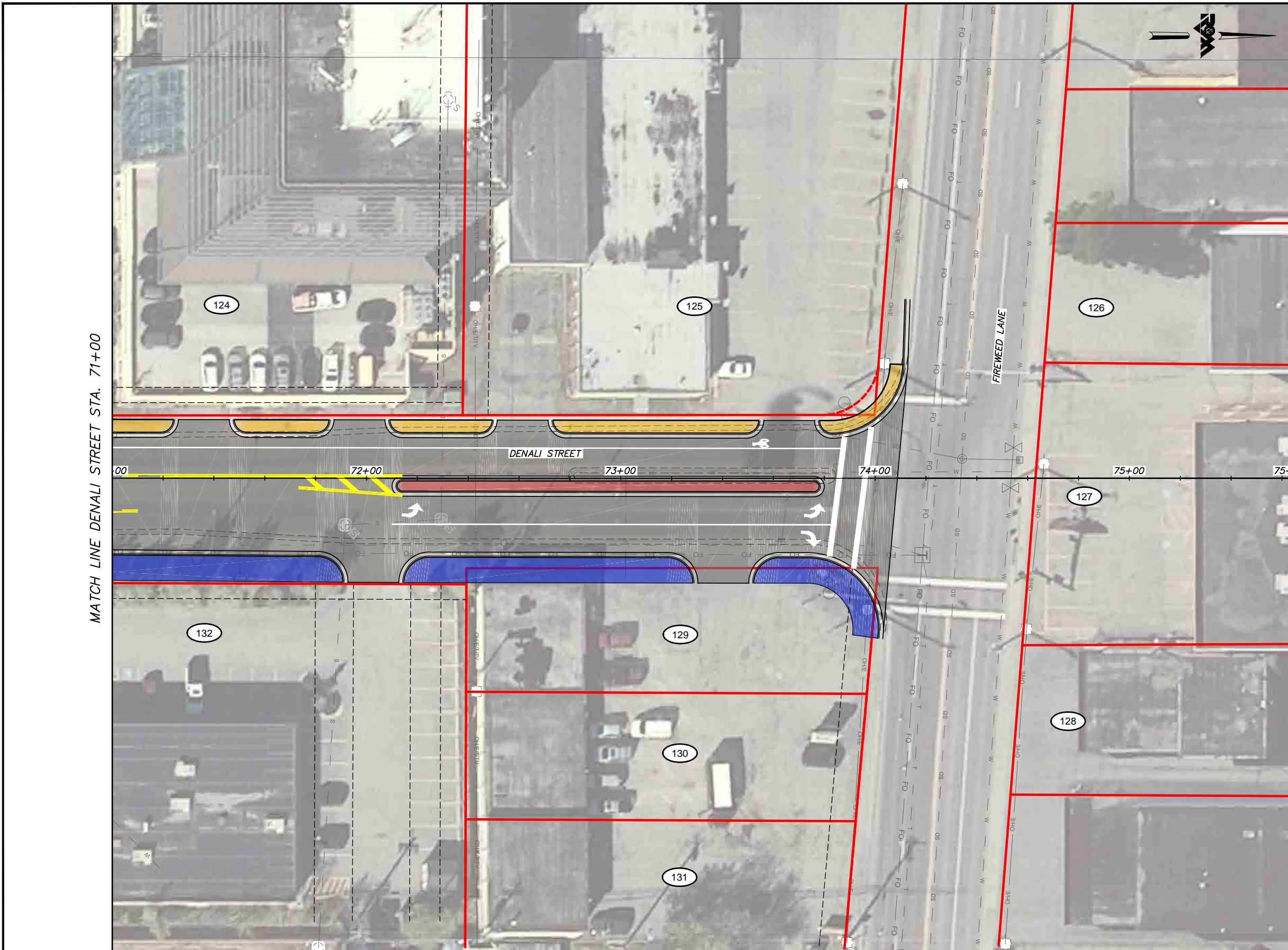
SCALE 1:20 DATE 8/31/18 GRID 1531 1630 1631  
ACCT. NO. 1730 1731 SHEET 15 of 72





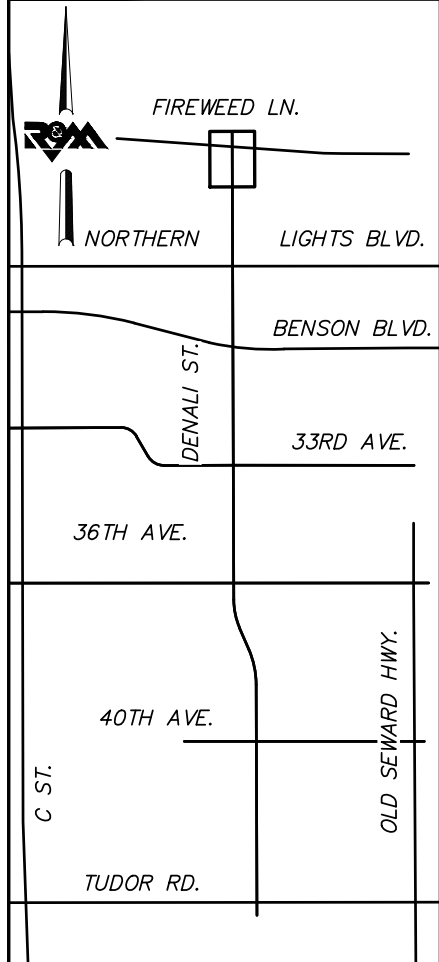
File Location: Z:\project\2517.01 MOA PME Denali Street\Civil\ACAD\2517\_Plan Denali Alt 1.dwg

Plotted: 8/31/2018 9:22 AM



**BEFORE YOU DIG  
CALL FOR FREE  
UNDERGROUND  
LOCATION**

LOCATE CALL CENTER OF ALASKA  
STATEWIDE ..... 800-478-3121 WILL  
NOTIFY SUBSCRIBED UTILITIES ONLY.  
OTHER UTILITIES NEED TO BE  
CONTACTED INDIVIDUALLY.



**KEYMAP**

**DRAFT DSR  
AUGUST 2018**



FIELD BOOKS	BM NO.	LOCATION	ELEV.	DATA	DRAWN BY	CHECKED BY	DATA	DRAWN BY	CHECKED BY	REV	DATE	DESCRIPTION	BY	REV	DATE	DESCRIPTION	BY
DESIGN				BASE TOPOGRAPHY PROFILE SANITARY SEWER STORM SEWER WATER GAS			TELEPHONE ELECTRIC CABLE TV DESIGN QUANTITIES MUN. FINAL CHK.										
CONTRACTOR	BASIS OF THIS DATUM																
INSPECTOR	VERTICAL DATUM						PLAN CHECK										
CONSTRUCTION RECORD																	
										REVISIONS							

R&M Consultants, Inc.  
9101 Vanguard Drive  
Anchorage, Alaska 99507  
907 522 1707 voice  
907 522 3404 fax  
www.rmconsult.com

SEAL



PROJECT MANAGEMENT AND  
ENGINEERING DEPARTMENT

16-28 MIDTOWN CORRIDOR IMPROVEMENTS:  
DENALI STREET AREA - BENSON  
BLVD TO TUDOR RD

DENALI STREET - ALTERNATIVE 1

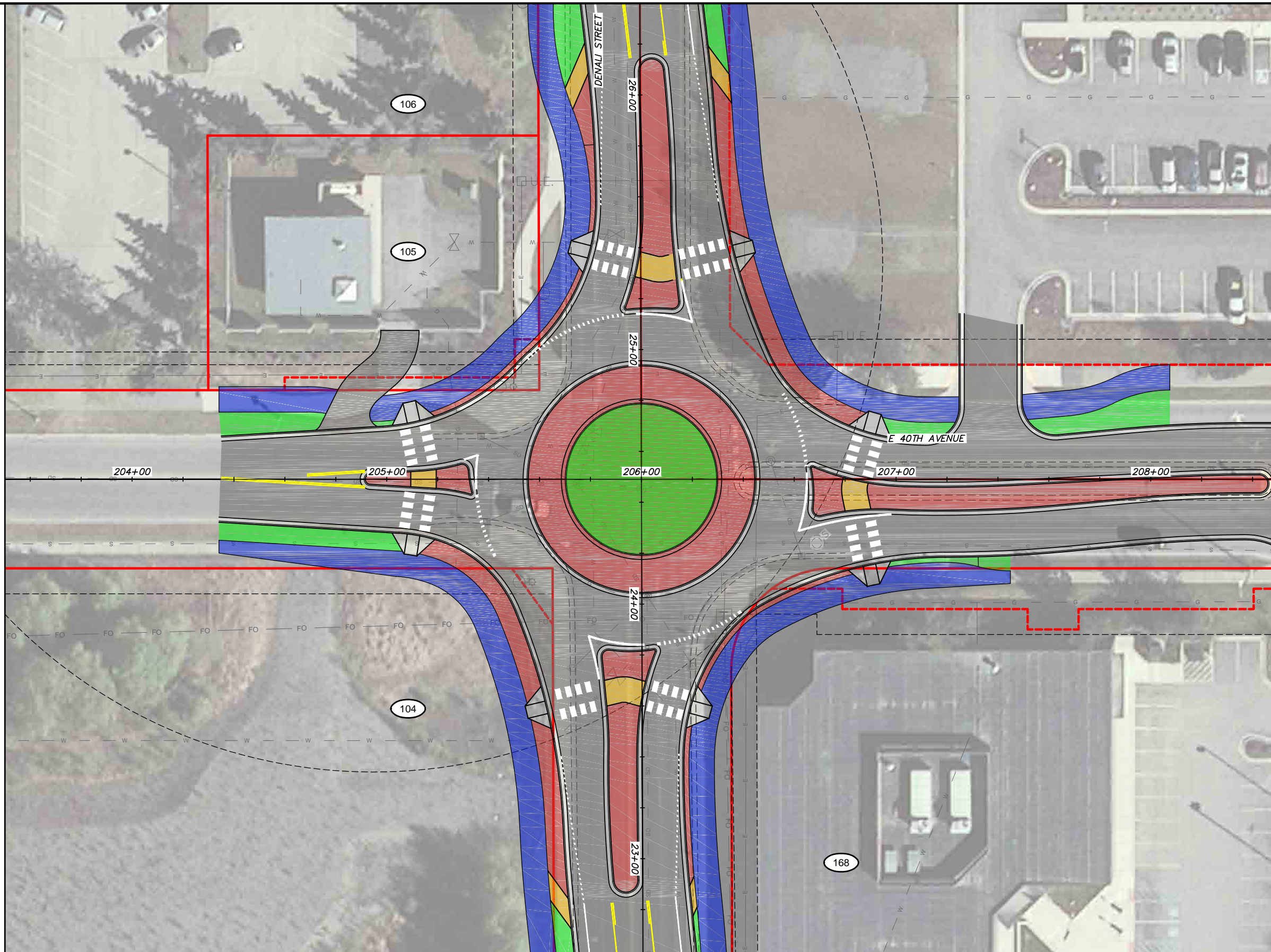
SCALE 1:20 DATE 8/31/18 GRID 1531 1630 1631  
ACCT. NO. 1730 1731 SHEET 17 of 72

File Location: Z:\project\2517.01 MOA PME Denali Street\Civil\ACAD\2517\_Plan Denali Alt 1.dwg

Plotted: 8/31/2018 9:22 AM

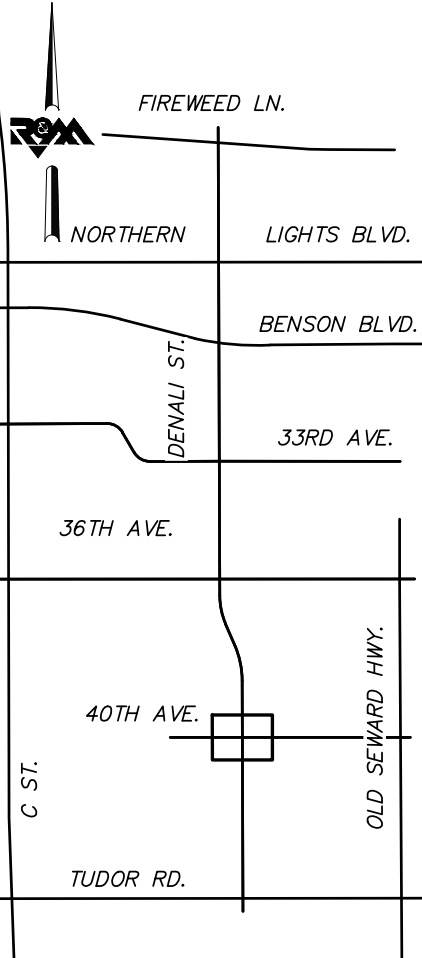
MATCH LINE E 40TH AVENUE STA. 203+50

MATCH LINE E 36TH AVENUE STA. 208+50



**BEFORE YOU DIG  
CALL FOR FREE  
UNDERGROUND  
LOCATION**

LOCATE CALL CENTER OF ALASKA  
STATEWIDE ..... 800-478-3121 WILL  
NOTIFY SUBSCRIBED UTILITIES ONLY.  
OTHER UTILITIES NEED TO BE  
CONTACTED INDIVIDUALLY.



**KEYMAP**

**DRAFT DSR  
AUGUST 2018**



FIELD BOOKS	BM NO.	LOCATION	ELEV.	DATA	DRAWN BY	CHECKED BY	DATA	DRAWN BY	CHECKED BY	REV	DATE	DESCRIPTION	BY	REV	DATE	DESCRIPTION	BY	
				BASE			TELEPHONE											
				TOPOGRAPHY			ELECTRIC											
				PROFILE			CABLE TV											
				SANITARY SEWER			DESIGN											
				STORM SEWER			QUANTITIES											
				WATER			MUN. FINAL CHK.											
				GAS														
CONTRACTOR	BASIS OF THIS DATUM																	
INSPECTOR	VERTICAL DATUM																	
CONSTRUCTION RECORD	PLAN CHECK																	
	REVISIONS																	



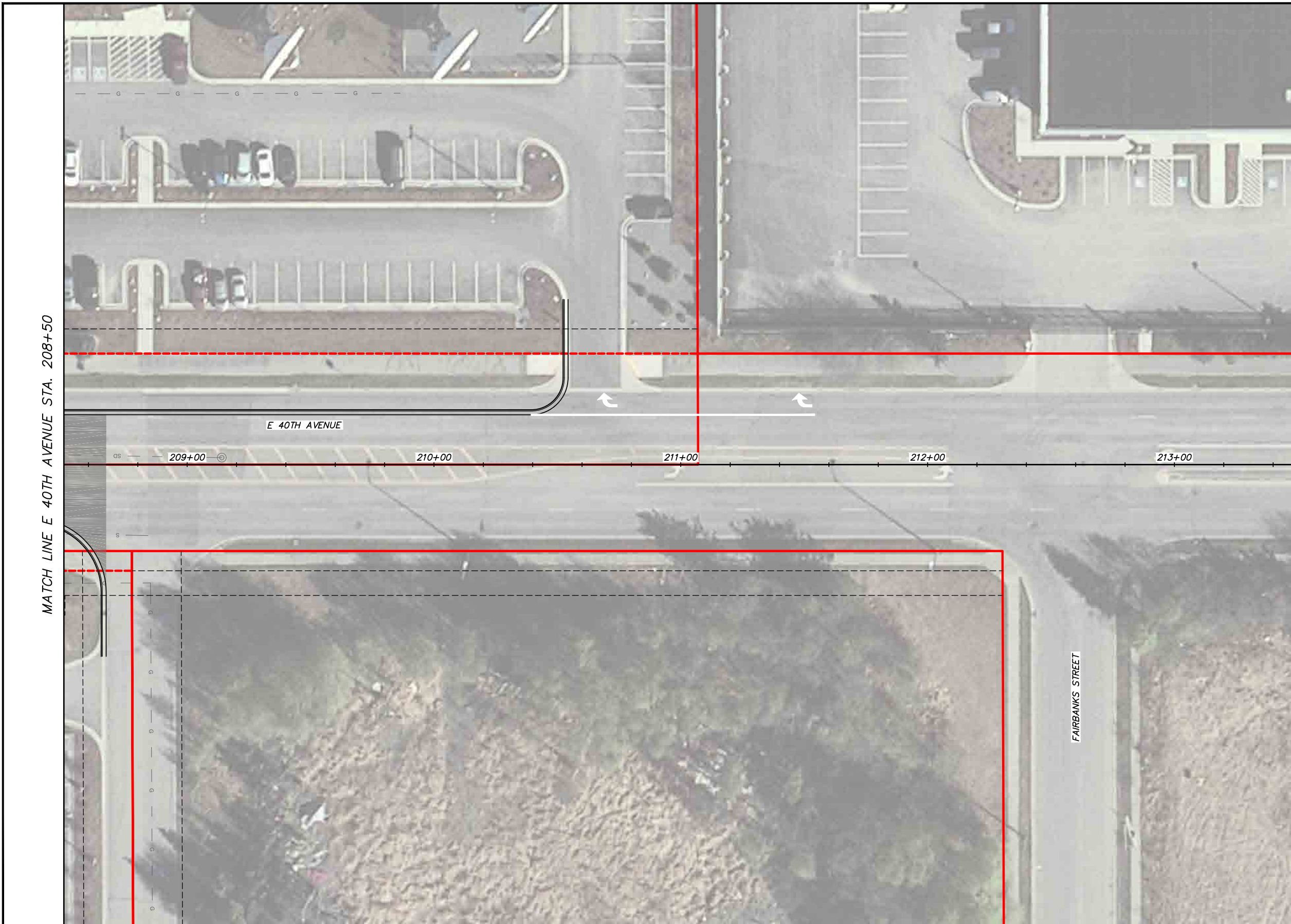
R&M Consultants, Inc.  
9101 Vanguard Drive  
Anchorage, Alaska 99507  
907 522 1707 voice  
907 522 3404 fax  
www.rmconsult.com



PROJECT MANAGEMENT AND ENGINEERING DEPARTMENT	
16-28	MIDTOWN CORRIDOR IMPROVEMENTS: DENALI STREET AREA - BENSON BLVD TO TUDOR RD DENALI STREET - ALTERNATIVE 1
SCALE 1:20	DATE 8/31/18 GRID 1531 1630 1631 1730 1731 SHEET 18 of 72

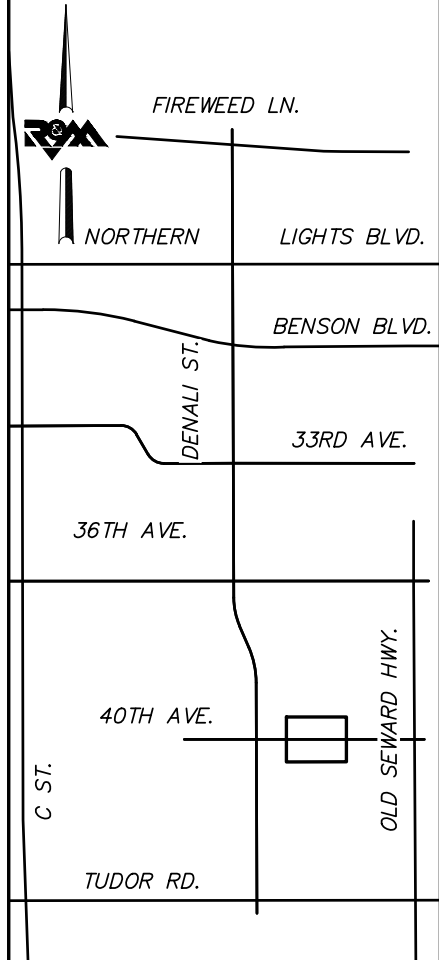
File Location: Z:\project\2517.01 MOA PME Denali Street\Civil\ACAD\2517\_Plan\_Denali\_Alt\_1.dwg

Plotted: 8/31/2018 9:22 AM



**BEFORE YOU DIG  
CALL FOR FREE  
UNDERGROUND  
LOCATION**

LOCATE CALL CENTER OF ALASKA  
STATEWIDE ..... 800-478-3121 WILL  
NOTIFY SUBSCRIBED UTILITIES ONLY.  
OTHER UTILITIES NEED TO BE  
CONTACTED INDIVIDUALLY.



**KEYMAP**

**DRAFT DSR  
AUGUST 2018**



FIELD BOOKS	BM NO.	LOCATION	ELEV.	DATA	DRAWN BY	CHECKED BY	DATA	DRAWN BY	CHECKED BY	REV	DATE	DESCRIPTION	BY	REV	DATE	DESCRIPTION	BY		
				BASE			TELEPHONE												
				TOPOGRAPHY			ELECTRIC												
				PROFILE			CABLE TV												
				SANITARY SEWER			DESIGN												
				STORM SEWER			QUANTITIES												
				WATER			MUN. FINAL CHK.												
				GAS															
CONTRACTOR	BASIS OF THIS DATUM																		
INSPECTOR																			
CONSTRUCTION RECORD	VERTICAL DATUM			PLAN CHECK				REVISIONS				CONSULTANT				SEAL			



R&M Consultants, Inc.  
9101 Vanguard Drive  
Anchorage, Alaska 99507  
907 522 1707 voice  
907 522 3404 fax  
www.rmconsult.com

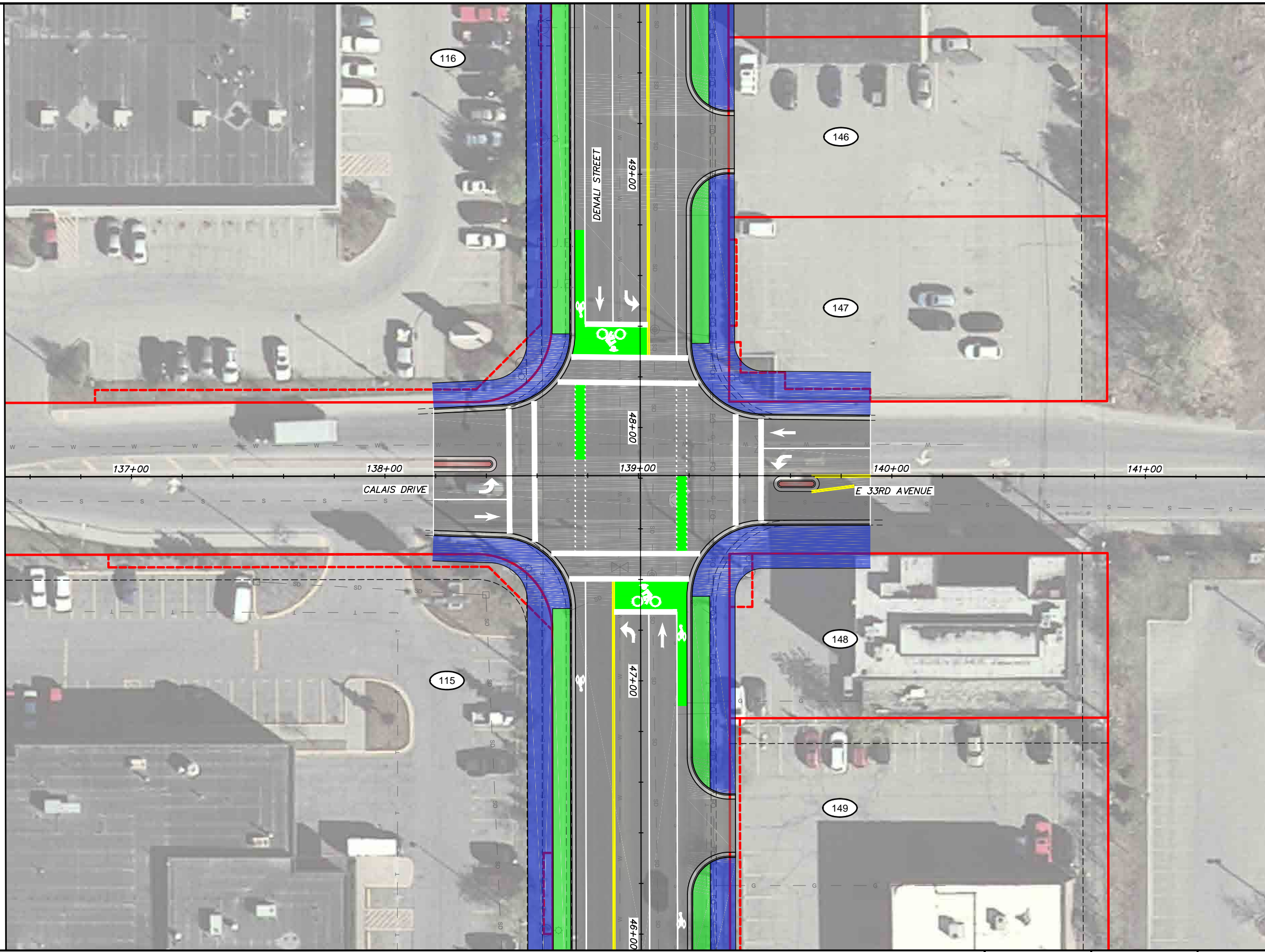


PROJECT MANAGEMENT AND ENGINEERING DEPARTMENT	
16-28	MIDTOWN CORRIDOR IMPROVEMENTS: DENALI STREET AREA - BENSON BLVD TO TUDOR RD  DENALI STREET - ALTERNATIVE 1
SCALE 1:20	DATE 8/31/18 GRID 1531 1630 1631 1730 1731 SHEET 19 of 72

File Location: Z:\project\2517.01 MOA PME Denali Street\Civil\ACAD\2517\_Plan Denali Alt 1.dwg

Plotted: 8/31/2018 9:22 AM

MATCH LINE CALIAS DRIVE STA. 136+50

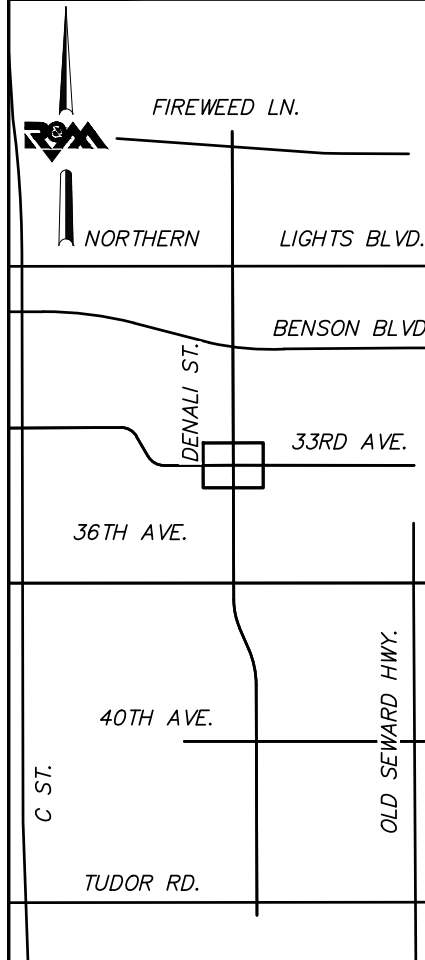


MATCH LINE E 33RD AVENUE STA. 141+50



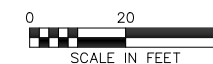
BEFORE YOU DIG  
CALL FOR FREE  
UNDERGROUND  
LOCATION

LOCATE CALL CENTER OF ALASKA  
STATEWIDE ..... 800-478-3121 WILL  
NOTIFY SUBSCRIBED UTILITIES ONLY.  
OTHER UTILITIES NEED TO BE  
CONTACTED INDIVIDUALLY.



KEYMAP

DRAFT DSR  
AUGUST 2018



FIELD BOOKS	BM NO.	LOCATION	ELEV.	DATA	DRAWN BY	CHECKED BY	DATA	DRAWN BY	CHECKED BY	REV	DATE	DESCRIPTION	BY	REV	DATE	DESCRIPTION	BY
				BASE			TELEPHONE										
				TOPOGRAPHY			ELECTRIC										
				PROFILE			CABLE TV										
				SANITARY SEWER			DESIGN										
				STORM SEWER			QUANTITIES										
				WATER			MUN. FINAL CHK.										
				GAS													
CONTRACTOR	BASIS OF THIS DATUM																
INSPECTOR																	
CONSTRUCTION RECORD	VERTICAL DATUM			PLAN CHECK				REVISIONS				CONSULTANT					



R&M Consultants, Inc.  
9101 Vanguard Drive  
Anchorage, Alaska 99507  
907 522 1707 voice  
907 522 3404 fax  
www.rmconsult.com



PROJECT MANAGEMENT AND ENGINEERING DEPARTMENT	
16-28	MIDTOWN CORRIDOR IMPROVEMENTS: DENALI STREET AREA - BENSON BLVD TO TUDOR RD  DENALI STREET - ALTERNATIVE 1
SCALE 1:20	DATE 8/31/18 GRID 1531 1630 1631 1730 1731 SHEET 20 of 72