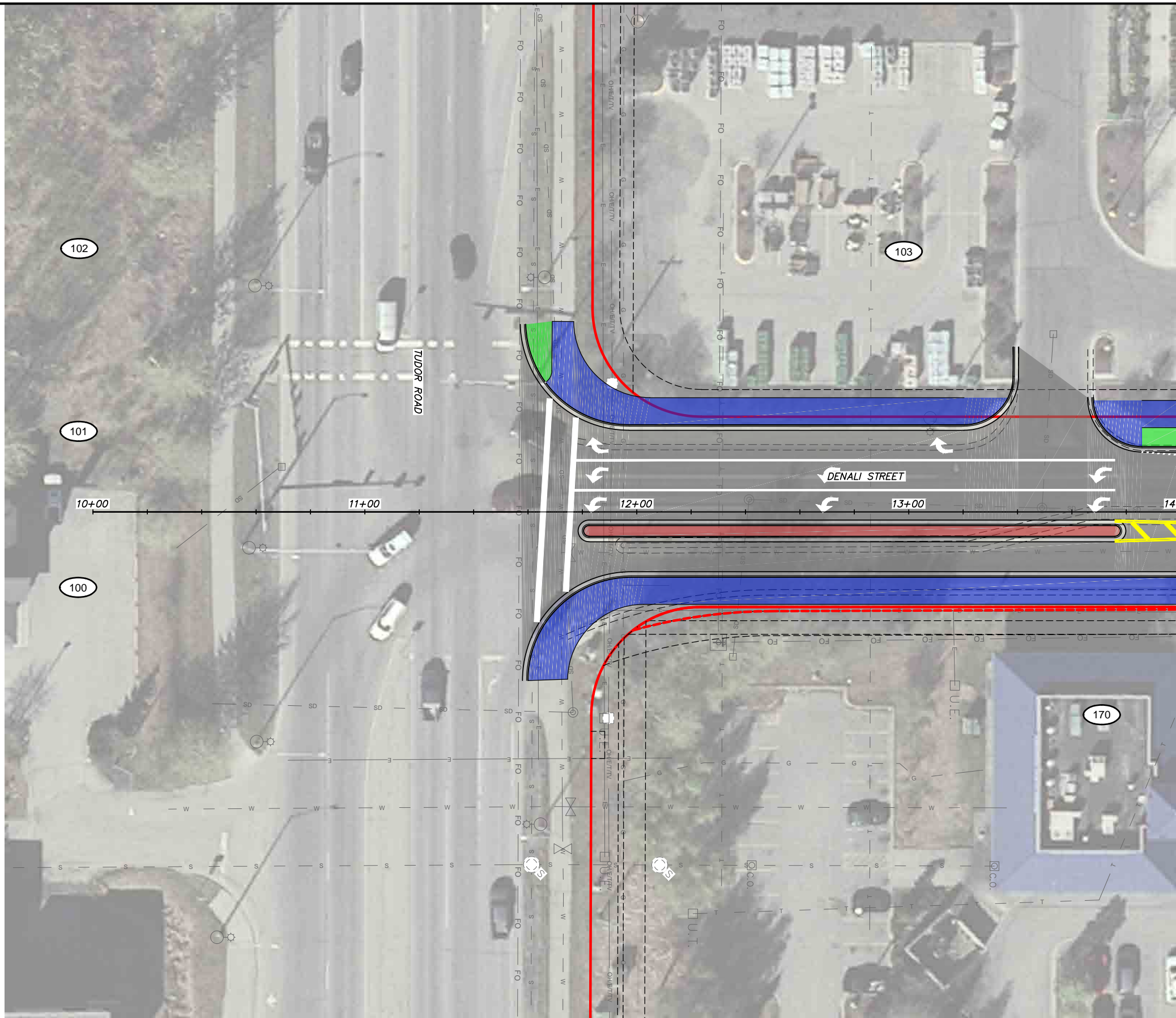
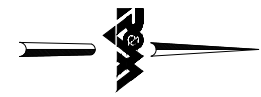


File Location: Z:\project\2517.01 MOA PME Denali Street\Civil\ACAD\2517_Plan_Denali_Alt_2.dwg

Plotted: 8/31/2018 9:24 AM

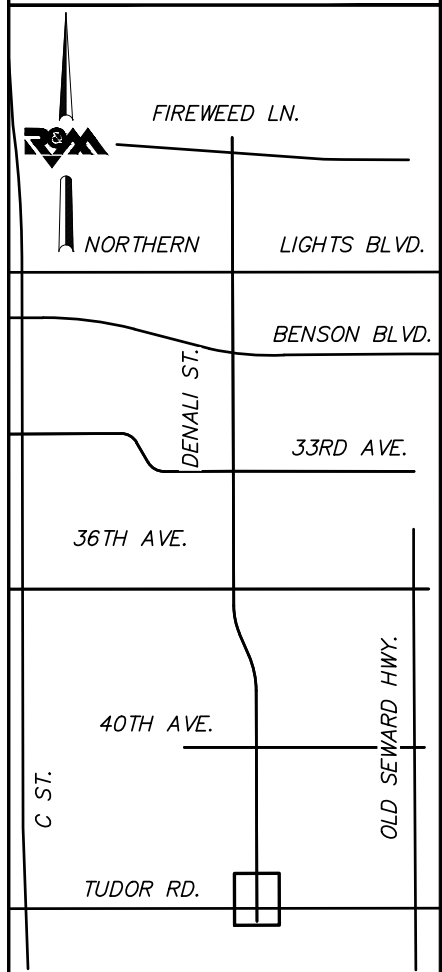


MATCH LINE DENALI STREET STA. 14+00



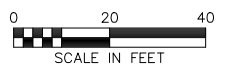
**BEFORE YOU DIG
CALL FOR FREE
UNDERGROUND
LOCATION**

LOCATE CALL CENTER OF ALASKA
STATEWIDE 800-478-3121 WILL
NOTIFY SUBSCRIBED UTILITIES ONLY.
OTHER UTILITIES NEED TO BE
CONTACTED INDIVIDUALLY.



KEYMAP

**DRAFT DSR
AUGUST 2018**



FIELD BOOKS	BM NO.	LOCATION	ELEV.	DATA	DRAWN BY	CHECKED BY	DATA	DRAWN BY	CHECKED BY	REV	DATE	DESCRIPTION	BY	REV	DATE	DESCRIPTION	BY
				BASE			TELEPHONE										
				TOPOGRAPHY			ELECTRIC										
				PROFILE			CABLE TV										
				SANITARY SEWER			DESIGN										
				STORM SEWER			QUANTITIES										
				WATER			MUN. FINAL CHK.										
				GAS													
CONTRACTOR	BASIS OF THIS DATUM																
INSPECTOR	VERTICAL DATUM			PLAN CHECK				REVISIONS				CONSULTANT		SEAL			

R&M Consultants, Inc.
9101 Vanguard Drive
Anchorage, Alaska 99507
907 522 1707 voice
907 522 3404 fax
www.rmconsult.com



PROJECT MANAGEMENT AND
ENGINEERING DEPARTMENT

16-28 MIDTOWN CORRIDOR IMPROVEMENTS:
DENALI STREET AREA - BENSON
BLVD TO TUDOR RD

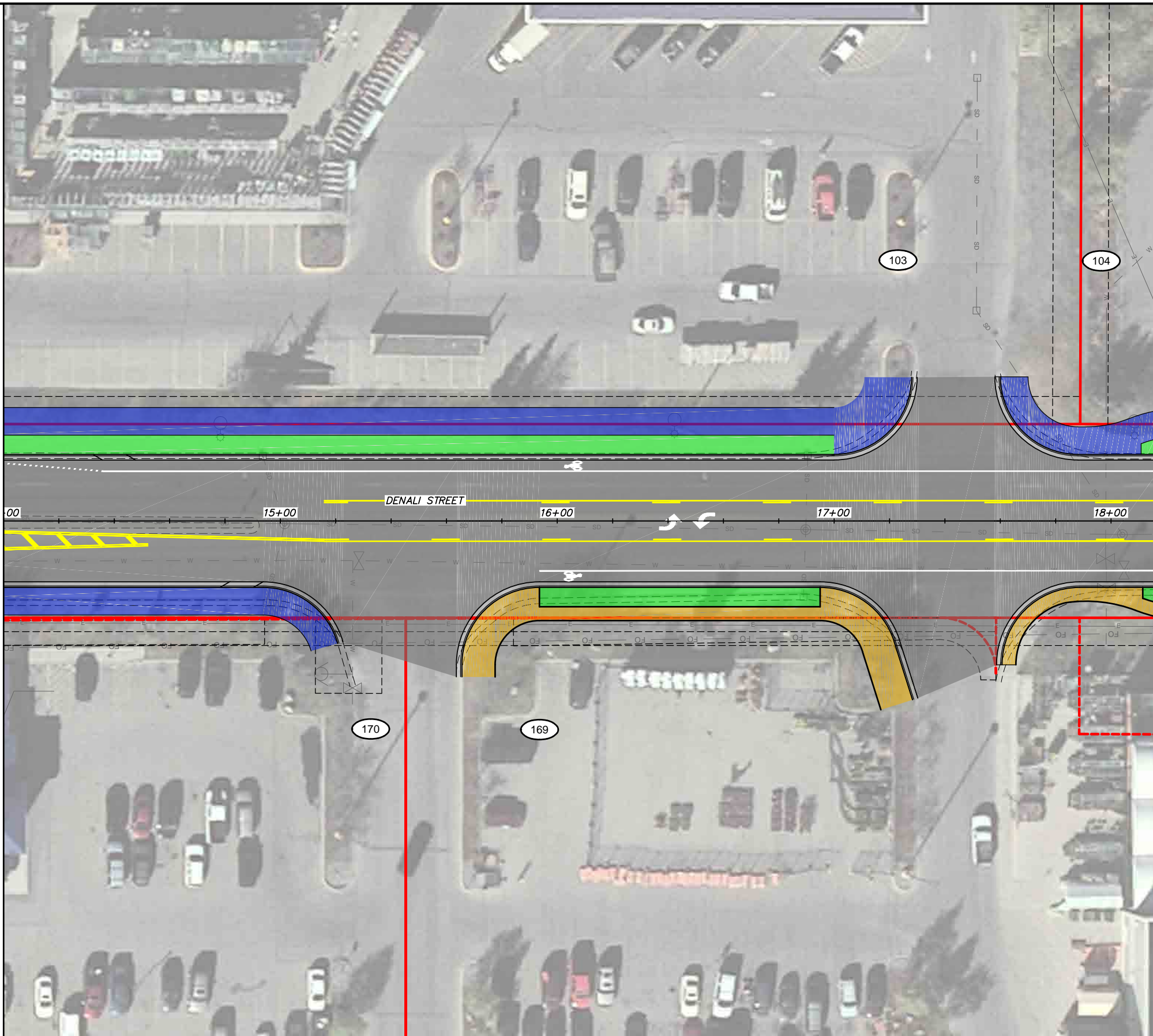
DENALI STREET - ALTERNATIVE 2

SCALE 1:20 DATE 8/31/18 GRID 1531 1630 1631
ACCT. NO. 1730 1731 SHEET 21 of 72

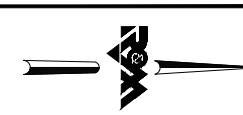
File Location: Z:\project\2517.01 MOA PME Denali Street\Civil\ACAD\2517_Plan Denali Alt 2.dwg

Plotted: 8/31/2018 9:24 AM

MATCH LINE DENALI STREET STA. 14+00



MATCH LINE DENALI STREET STA. 18+20



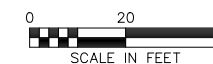
BEFORE YOU DIG
CALL FOR FREE
UNDERGROUND
LOCATION

LOCATE CALL CENTER OF ALASKA
STATEWIDE 800-478-3121 WILL
NOTIFY SUBSCRIBED UTILITIES ONLY.
OTHER UTILITIES NEED TO BE
CONTACTED INDIVIDUALLY.



KEYMAP

DRAFT DSR
AUGUST 2018



FIELD BOOKS	BM NO.	LOCATION	ELEV.	DATA	DRAWN BY	CHECKED BY	DATA	DRAWN BY	CHECKED BY	REV	DATE	DESCRIPTION	BY	REV	DATE	DESCRIPTION	BY		
				BASE			TELEPHONE												
				TOPOGRAPHY			ELECTRIC												
				PROFILE			CABLE TV												
				SANITARY SEWER			DESIGN												
				STORM SEWER			QUANTITIES												
				WATER			MUN. FINAL CHK.												
				GAS															
CONTRACTOR	BASIS OF THIS DATUM																		
INSPECTOR																			
CONSTRUCTION RECORD	VERTICAL DATUM			PLAN CHECK				REVISIONS				CONSULTANT				SEAL			



R&M Consultants, Inc.
9101 Vanguard Drive
Anchorage, Alaska 99507
907 522 1707 voice
907 522 3404 fax
www.rmconsult.com



PROJECT MANAGEMENT AND ENGINEERING DEPARTMENT	
16-28	MIDTOWN CORRIDOR IMPROVEMENTS: DENALI STREET AREA - BENSON BLVD TO TUDOR RD DENALI STREET - ALTERNATIVE 2
SCALE 1:20	DATE 8/31/18 GRID 1531 1630 1631 1730 1731 SHEET 22 of 72

MATCH LINE DENALI STREET STA. 18+20

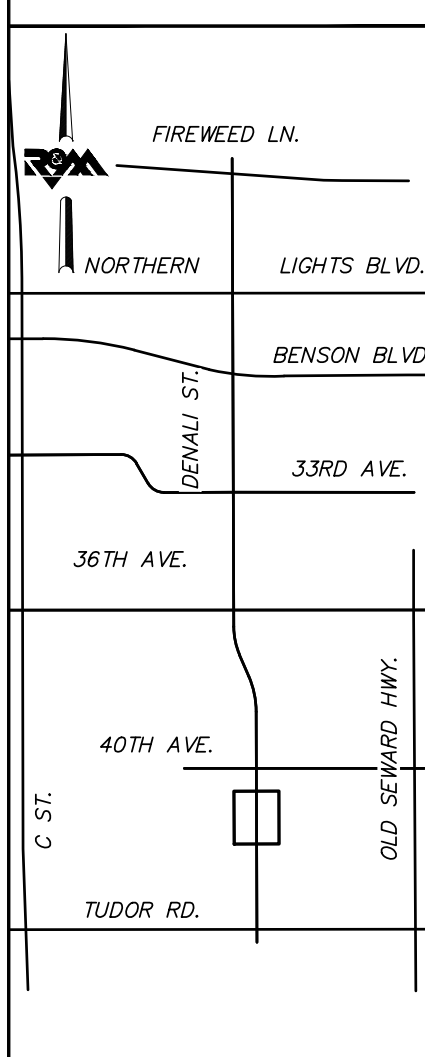


MATCH LINE DENALI STREET STA. 22+60



BEFORE YOU DIG CALL FOR FREE UNDERGROUND LOCATION

LOCATE CALL CENTER OF ALASKA STATEWIDE 800-478-3121 WILL NOTIFY SUBSCRIBED UTILITIES ONLY. OTHER UTILITIES NEED TO BE CONTACTED INDIVIDUALLY.



KEYMAP

**DRAFT DSR
AUGUST 2018**

0 20 40
SCALE IN FEET

FIELD BOOKS	BM NO.	LOCATION	ELEV.	DATA	DRAWN BY	CHECKED BY	DATA	DRAWN BY	CHECKED BY	REV	DATE	DESCRIPTION	BY	REV	DATE	DESCRIPTION	BY
				BASE			TELEPHONE										
				TOPOGRAPHY			ELECTRIC										
				PROFILE			CABLE TV										
				SANITARY SEWER			DESIGN										
				STORM SEWER			QUANTITIES										
				WATER			MUN. FINAL CHK.										
				GAS													
CONSTRUCTION RECORD				VERTICAL DATUM				PLAN CHECK				REVISIONS					

R&M Consultants, Inc.
9101 Vanguard Drive
Anchorage, Alaska 99507
907 522 1707 voice
907 522 3404 fax
www.rmconsult.com

SEAL

PROJECT MANAGEMENT AND ENGINEERING DEPARTMENT

16-28 MIDTOWN CORRIDOR IMPROVEMENTS: DENALI STREET AREA - BENSON BLVD TO TUDOR RD

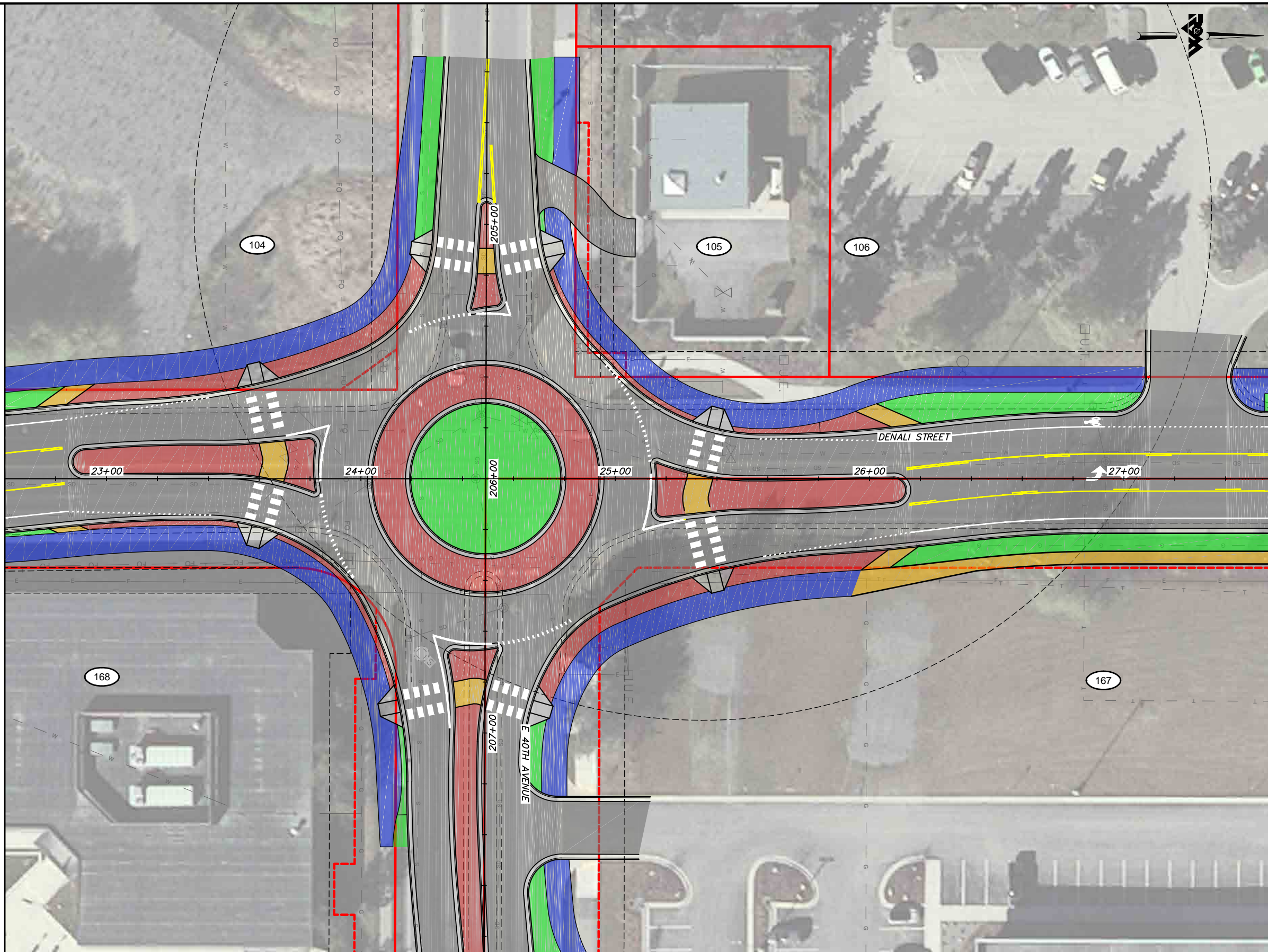
DENALI STREET - ALTERNATIVE 2

SCALE 1:20 DATE 8/31/18 GRID 1531 1630 1631 1730 1731 SHEET 23 of 72

File Location: Z:\project\2517.01 MOA PME Denali Street\Civil\ACAD\2517_Plan_Denali_Alt_2.dwg

Plotted: 8/31/2018 9:25 AM

MATCH LINE DENALI STREET STA. 22+60

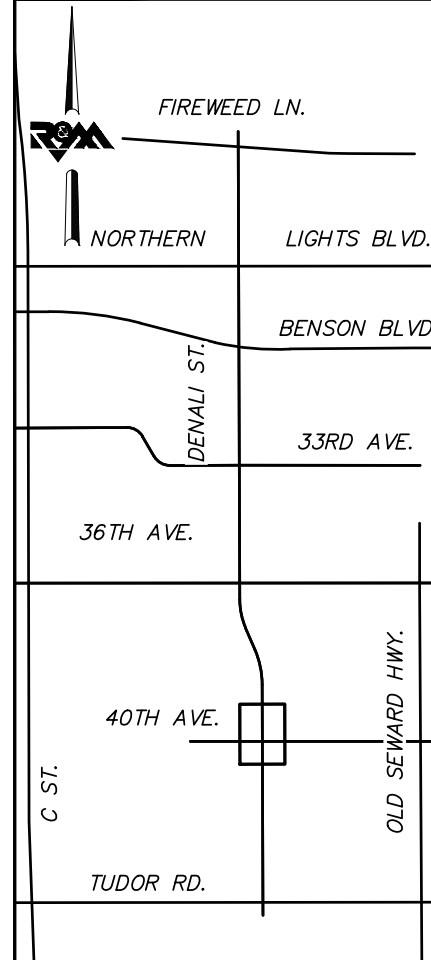


MATCH LINE DENALI STREET STA. 27+60



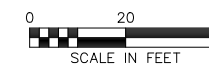
BEFORE YOU DIG
CALL FOR FREE
UNDERGROUND
LOCATION

LOCATE CALL CENTER OF ALASKA
STATEWIDE 800-478-3121 WILL
NOTIFY SUBSCRIBED UTILITIES ONLY.
OTHER UTILITIES NEED TO BE
CONTACTED INDIVIDUALLY.



KEYMAP

**DRAFT DSR
AUGUST 2018**



FIELD BOOKS	BM NO.	LOCATION	ELEV.	DATA	DRAWN BY	CHECKED BY	DATA	DRAWN BY	CHECKED BY	REV	DATE	DESCRIPTION	BY	REV	DATE	DESCRIPTION	BY
DESIGN				BASE			TELEPHONE										
				TOPOGRAPHY			ELECTRIC										
				PROFILE			CABLE TV										
				SANITARY SEWER			DESIGN										
				STORM SEWER			QUANTITIES										
CONTRACTOR	BASIS OF THIS DATUM			WATER			MUN. FINAL CHK.										
INSPECTOR				GAS													
CONSTRUCTION RECORD				VERTICAL DATUM			PLAN CHECK										

R&M
R&M Consultants, Inc.
9101 Vanguard Drive
Anchorage, Alaska 99507
907 522 1707 voice
907 522 3404 fax
www.rmconsult.com



PROJECT MANAGEMENT AND
ENGINEERING DEPARTMENT

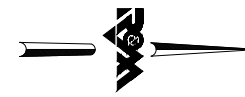
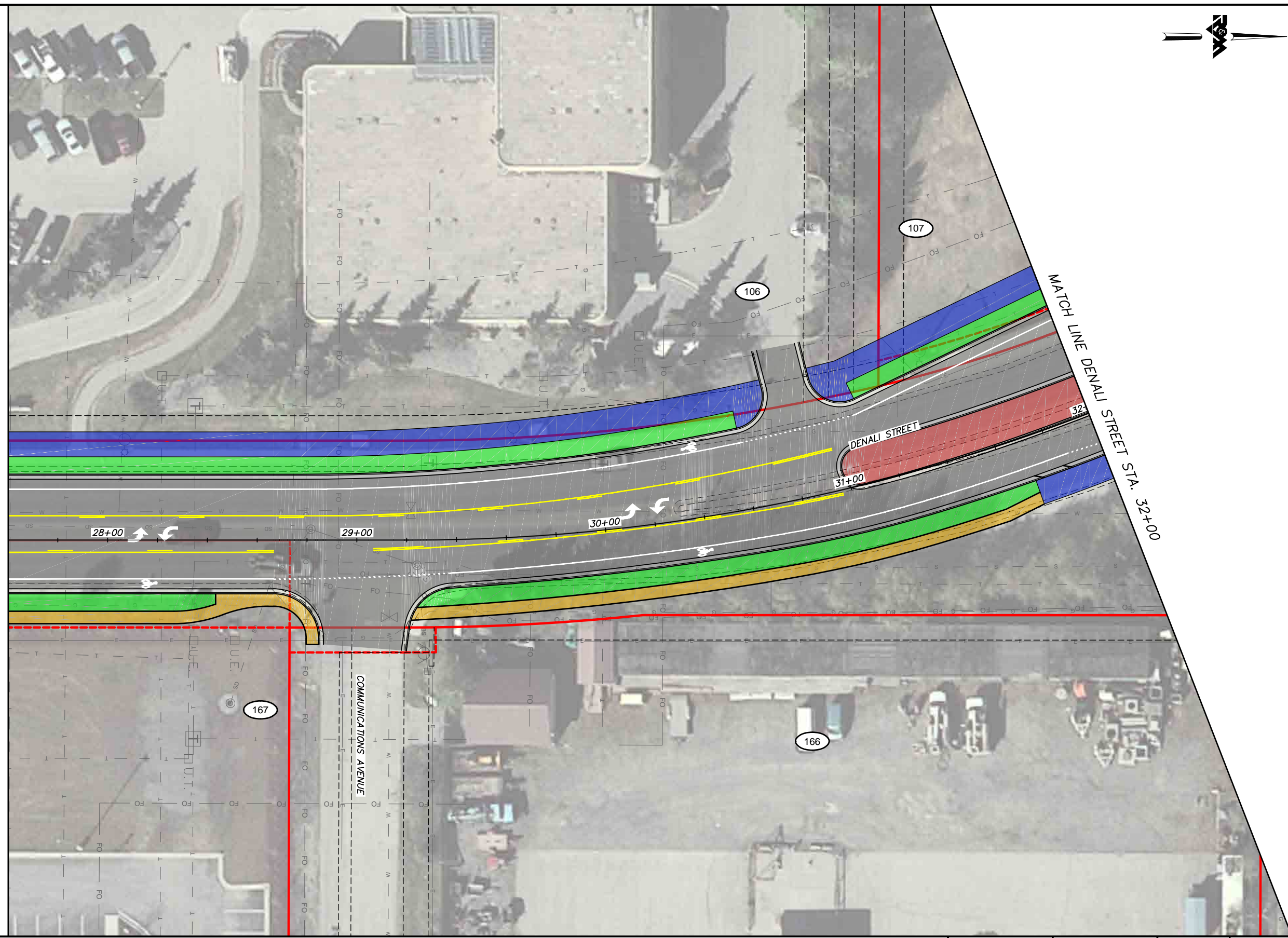
16-28 MIDTOWN CORRIDOR IMPROVEMENTS:
DENALI STREET AREA - BENSON
BLVD TO TUDOR RD
DENALI STREET - ALTERNATIVE 2

SCALE 1:20 DATE 8/31/18 GRID 1531 1630 1631
ACCT. NO. 1730 1731 SHEET 24 of 72

File Location: Z:\project\2517.01 MOA PME Denali Street\Civil\ACAD\2517_Plan_Denali_Alt_2.dwg

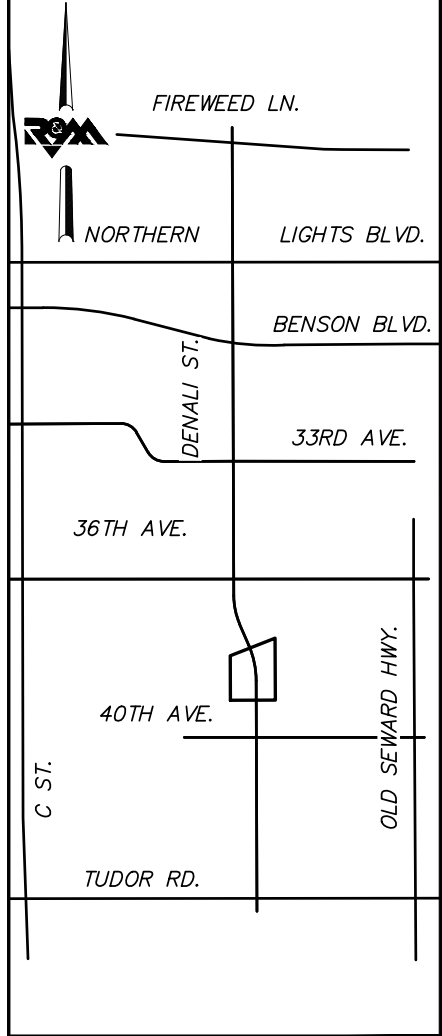
Plotted: 8/31/2018 9:25 AM

MATCH LINE DENALI STREET STA. 27+60



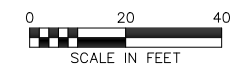
**BEFORE YOU DIG
CALL FOR FREE
UNDERGROUND
LOCATION**

LOCATE CALL CENTER OF ALASKA
STATEWIDE 800-478-3121 WILL
NOTIFY SUBSCRIBED UTILITIES ONLY.
OTHER UTILITIES NEED TO BE
CONTACTED INDIVIDUALLY.



KEYMAP

**DRAFT DSR
AUGUST 2018**



FIELD BOOKS	BM NO.	LOCATION	ELEV.	DATA	DRAWN BY	CHECKED BY	DATA	DRAWN BY	CHECKED BY	REV	DATE	DESCRIPTION	BY	REV	DATE	DESCRIPTION	BY
				BASE			TELEPHONE										
				TOPOGRAPHY			ELECTRIC										
				PROFILE			CABLE TV										
				SANITARY SEWER			DESIGN										
				STORM SEWER			QUANTITIES										
				WATER			MUN. FINAL CHK.										
				GAS													
CONTRACTOR				BASIS OF THIS DATUM													
INSPECTOR				VERTICAL DATUM				PLAN CHECK				REVISIONS					
CONSTRUCTION RECORD																	

R&M Consultants, Inc.
9101 Vanguard Drive
Anchorage, Alaska 99507
907 522 1707 voice
907 522 3404 fax
www.rmconsult.com

SEAL

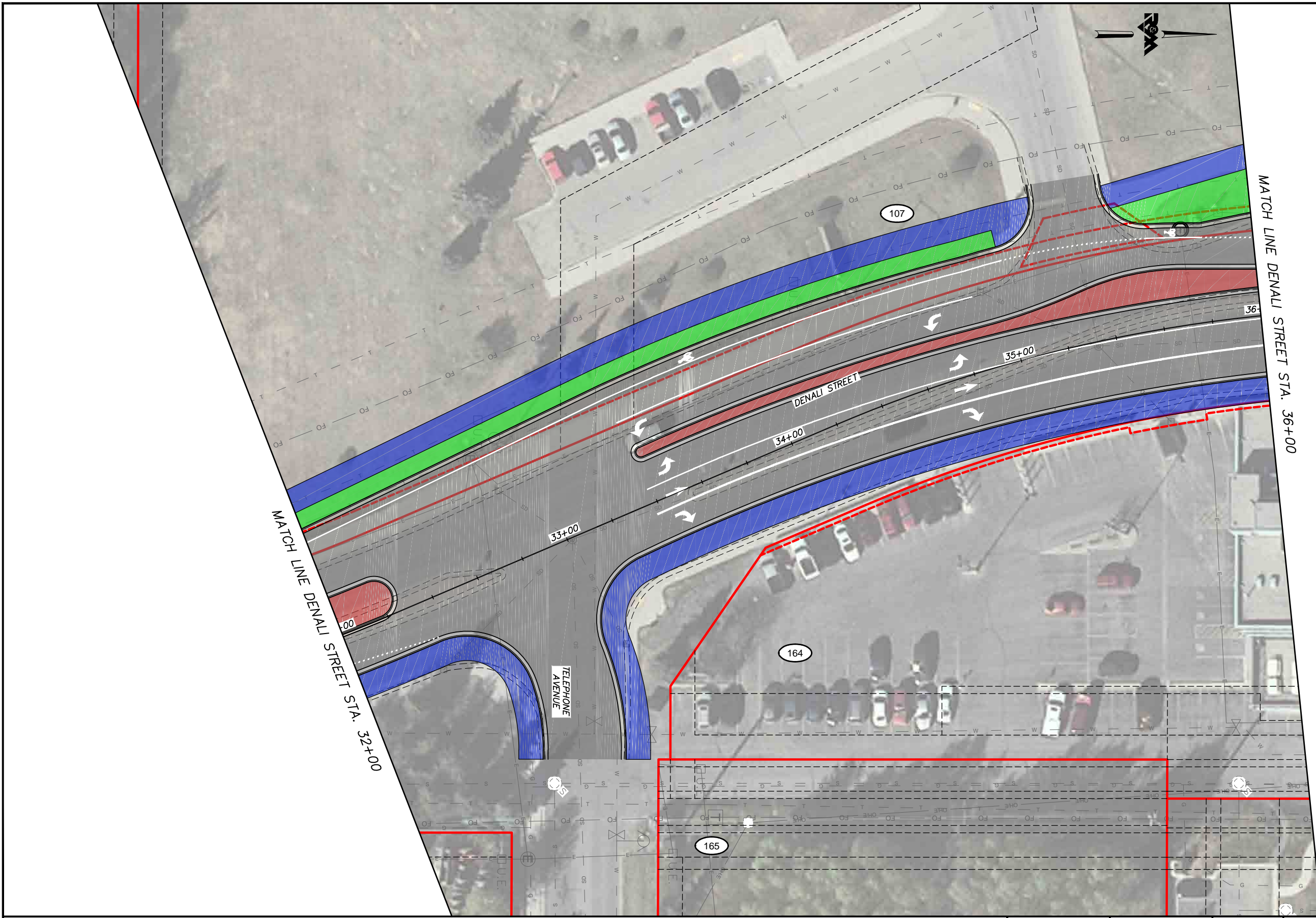


PROJECT MANAGEMENT AND
ENGINEERING DEPARTMENT

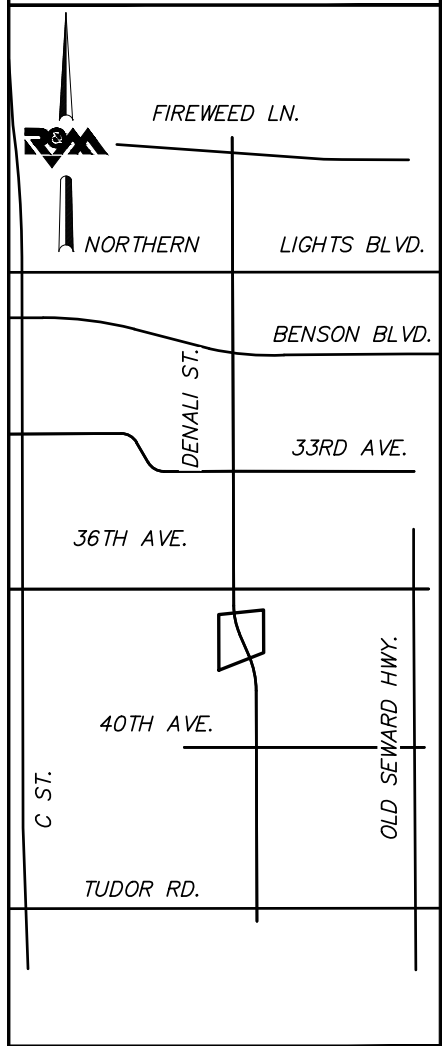
16-28 MIDTOWN CORRIDOR IMPROVEMENTS:
DENALI STREET AREA - BENSON
BLVD TO TUDOR RD

DENALI STREET - ALTERNATIVE 2

SCALE 1:20 DATE 8/31/18 GRID 1531 1630 1631
ACCT. NO. 1730 1731 SHEET 25 of 72



LOCATE CALL CENTER OF ALASKA STATEWIDE 800-478-3121 WILL NOTIFY SUBSCRIBED UTILITIES ONLY. OTHER UTILITIES NEED TO BE CONTACTED INDIVIDUALLY.



KEYMAP

**DRAFT DSR
AUGUST 2018**



FIELD BOOKS	BM NO.	LOCATION	ELEV.	DATA	DRAWN BY	CHECKED BY	DATA	DRAWN BY	CHECKED BY	REV	DATE	DESCRIPTION	BY	REV	DATE	DESCRIPTION	BY
				BASE			TELEPHONE										
				TOPOGRAPHY			ELECTRIC										
				PROFILE			CABLE TV										
				SANITARY SEWER			DESIGN										
				STORM SEWER			QUANTITIES										
				WATER			MUN. FINAL CHK.										
				GAS													
CONTRACTOR	BASIS OF THIS DATUM																
INSPECTOR																	
CONSTRUCTION RECORD	VERTICAL DATUM			PLAN CHECK				REVISIONS				CONSULTANT					



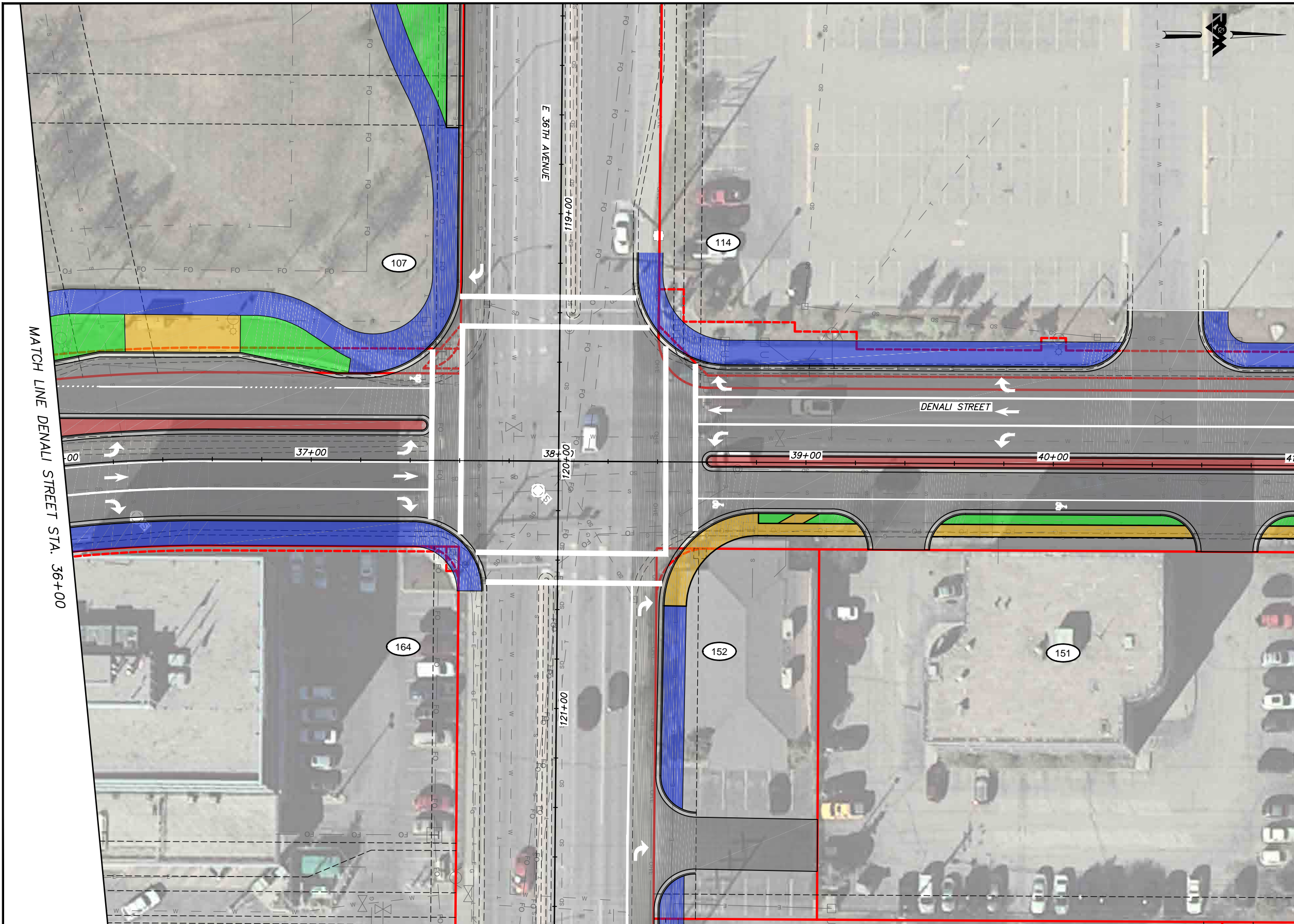
R&M Consultants, Inc.
9101 Vanguard Drive
Anchorage, Alaska 99507
907 522 1707 voice
907 522 3404 fax
www.rmconsult.com



PROJECT MANAGEMENT AND ENGINEERING DEPARTMENT	
16-28	MIDTOWN CORRIDOR IMPROVEMENTS: DENALI STREET AREA - BENSON BLVD TO TUDOR RD DENALI STREET - ALTERNATIVE 2
SCALE 1:20	DATE 8/31/18 GRID 1531 1630 1631 1730 1731 SHEET 26 of 72
	ACCT. NO.

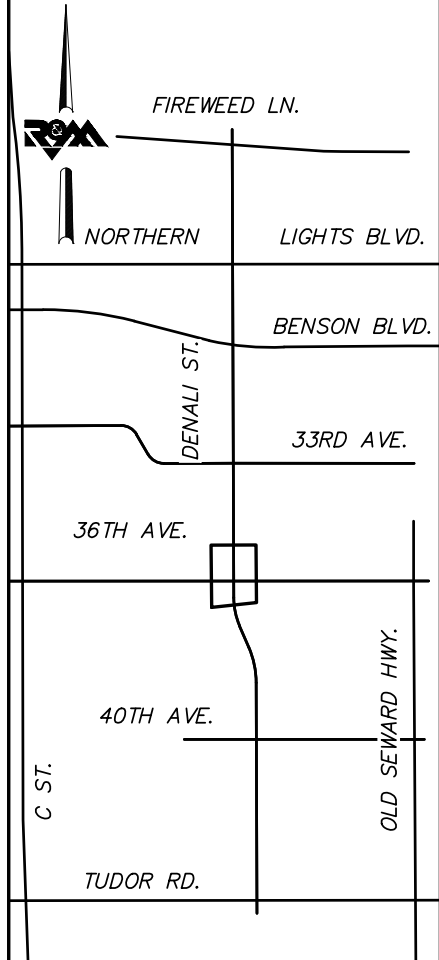
File Location: Z:\project\2517.01 MOA PME Denali Street\Civil\ACAD\2517_Plan_Denali Alt 2.dwg

Plotted: 8/31/2018 9:25 AM



**BEFORE YOU DIG
CALL FOR FREE
UNDERGROUND
LOCATION**

LOCATE CALL CENTER OF ALASKA
STATEWIDE 800-478-3121 WILL
NOTIFY SUBSCRIBED UTILITIES ONLY.
OTHER UTILITIES NEED TO BE
CONTACTED INDIVIDUALLY.



KEYMAP

**DRAFT DSR
AUGUST 2018**



FIELD BOOKS	BM NO.	LOCATION	ELEV.	DATA	DRAWN BY	CHECKED BY	DATA	DRAWN BY	CHECKED BY	REV	DATE	DESCRIPTION	BY	REV	DATE	DESCRIPTION	BY
DESIGN				BASE TOPOGRAPHY PROFILE SANITARY SEWER STORM SEWER WATER GAS			TELEPHONE ELECTRIC CABLE TV DESIGN QUANTITIES MUN. FINAL CHK.										
CONTRACTOR	BASIS OF THIS DATUM																
INSPECTOR																	
CONSTRUCTION RECORD		VERTICAL DATUM					PLAN CHECK										

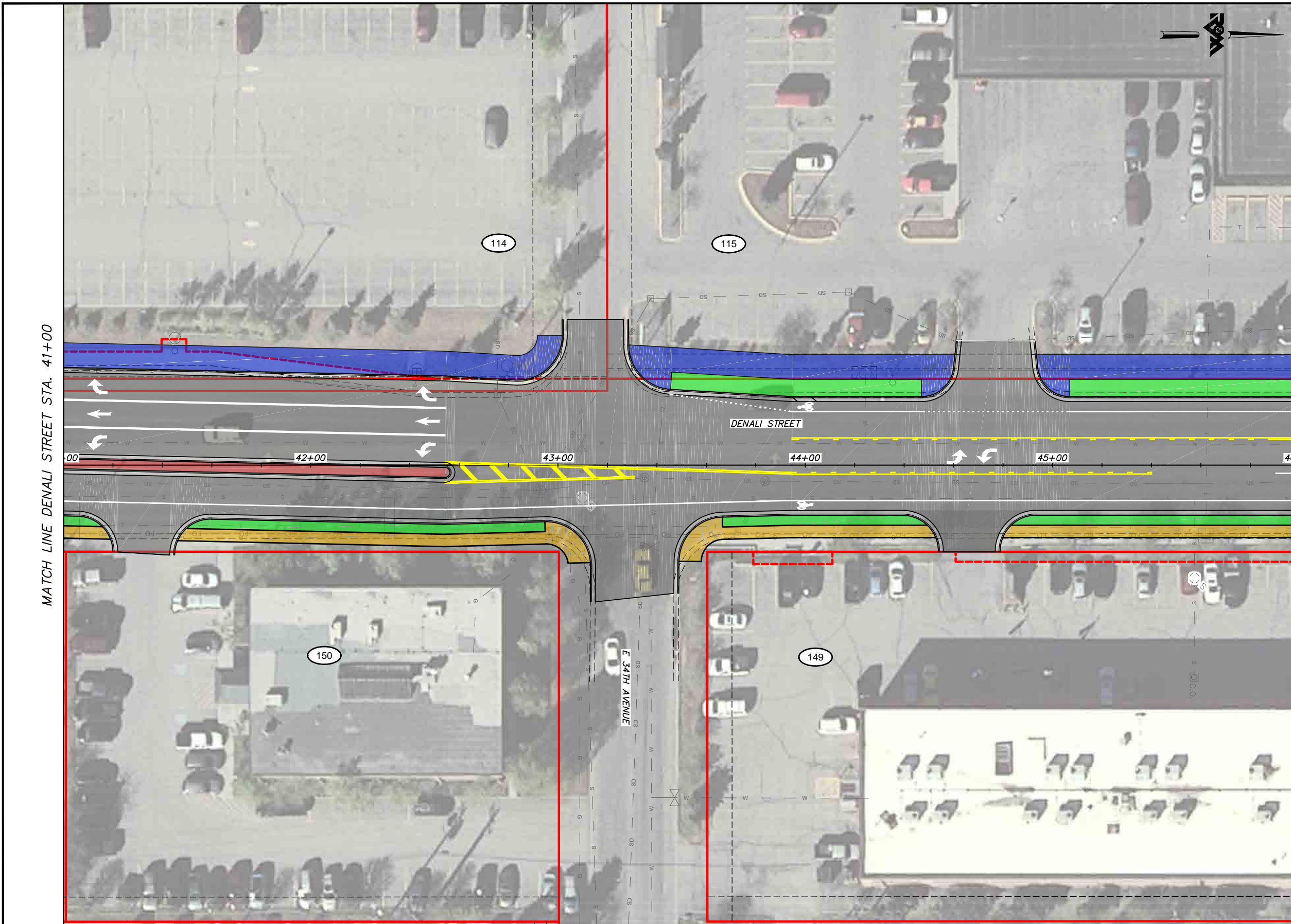
R&M Consultants, Inc.
9101 Vanguard Drive
Anchorage, Alaska 99507
907 522 1707 voice
907 522 3404 fax
www.rmconsult.com

PROJECT MANAGEMENT AND
ENGINEERING DEPARTMENT

16-28 MIDTOWN CORRIDOR IMPROVEMENTS:
DENALI STREET AREA - BENSON
BLVD TO TUDOR RD

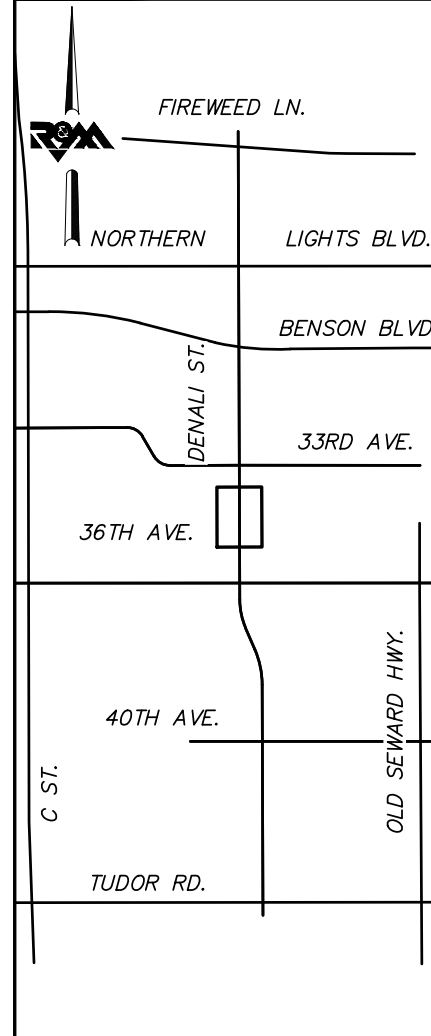
DENALI STREET - ALTERNATIVE 2

SCALE 1:20 DATE 8/31/18 GRID 1531 1630 1631
ACCT. NO. 1730 1731 SHEET 27 of 72



**BEFORE YOU DIG
CALL FOR FREE
UNDERGROUND
LOCATION**

LOCATE CALL CENTER OF ALASKA
STATEWIDE 800-478-3121 WILL
NOTIFY SUBSCRIBED UTILITIES ONLY.
OTHER UTILITIES NEED TO BE
CONTACTED INDIVIDUALLY.



KEYMAP

**DRAFT DSR
AUGUST 2018**



FIELD BOOKS	BM NO.	LOCATION	ELEV.	DATA	DRAWN BY	CHECKED BY	DATA	DRAWN BY	CHECKED BY	REV	DATE	DESCRIPTION	BY	REV	DATE	DESCRIPTION	BY	
DESIGN				BASE			TELEPHONE											
				TOPOGRAPHY			ELECTRIC											
				PROFILE			CABLE TV											
				SANITARY SEWER			DESIGN											
				STORM SEWER			QUANTITIES											
CONTRACTOR	BASIS OF THIS DATUM			WATER			MUN. FINAL CHK.											
INSPECTOR				GAS														
CONSTRUCTION RECORD		VERTICAL DATUM				PLAN CHECK										REVISIONS		

R&M Consultants, Inc.
9101 Vanguard Drive
Anchorage, Alaska 99507
907 522 1707 voice
907 522 3404 fax
www.rmconsult.com

SEAL



PROJECT MANAGEMENT AND
ENGINEERING DEPARTMENT

16-28 MIDTOWN CORRIDOR IMPROVEMENTS:
DENALI STREET AREA - BENSON
BLVD TO TUDOR RD

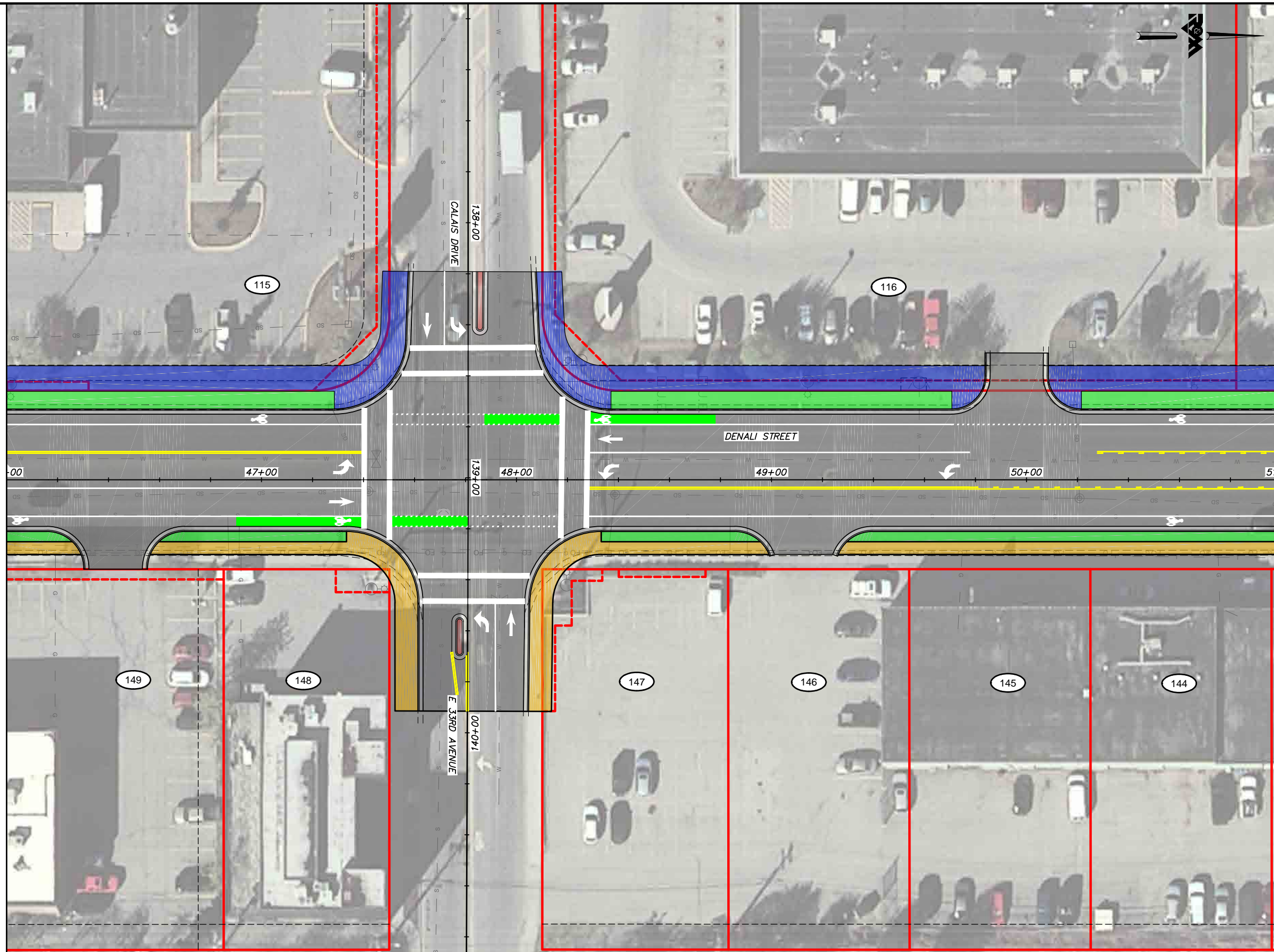
DENALI STREET - ALTERNATIVE 2

SCALE 1:20 DATE 8/31/18 GRID 1531 1630 1631 1730 1731 SHEET 28 of 72

File Location: Z:\project\2517.01 MOA PME Denali Street\Civil\ACAD\2517_Plan Denali Alt 2.dwg

Plotted: 8/31/2018 9:25 AM

MATCH LINE DENALI STREET STA. 46+00

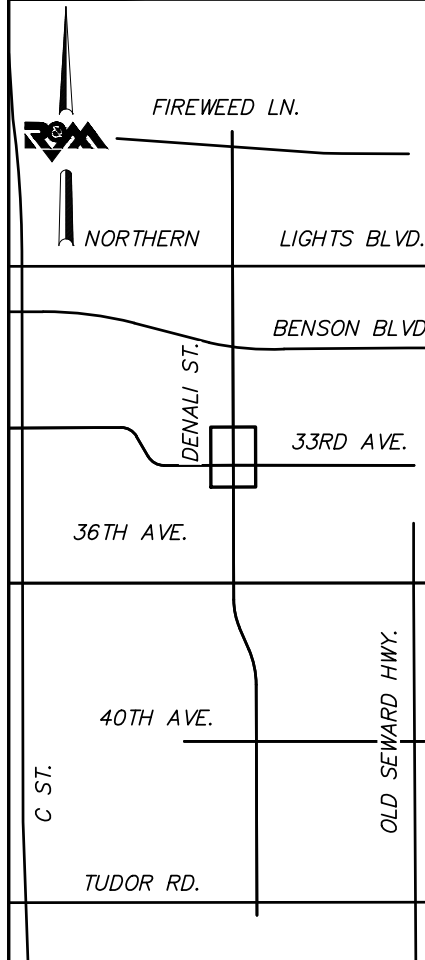


MATCH LINE DENALI STREET STA. 51+00



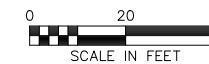
**BEFORE YOU DIG
CALL FOR FREE
UNDERGROUND
LOCATION**

LOCATE CALL CENTER OF ALASKA
STATEWIDE 800-478-3121 WILL
NOTIFY SUBSCRIBED UTILITIES ONLY.
OTHER UTILITIES NEED TO BE
CONTACTED INDIVIDUALLY.



KEYMAP

**DRAFT DSR
AUGUST 2018**



FIELD BOOKS	BM NO.	LOCATION	ELEV.	DATA	DRAWN BY	CHECKED BY	DATA	DRAWN BY	CHECKED BY	REV	DATE	DESCRIPTION	BY	REV	DATE	DESCRIPTION	BY
DESIGN				BASE TOPOGRAPHY PROFILE SANITARY SEWER STORM SEWER WATER GAS			TELEPHONE ELECTRIC CABLE TV DESIGN QUANTITIES MUN. FINAL CHK.										
CONTRACTOR	BASIS OF THIS DATUM																
INSPECTOR																	
CONSTRUCTION RECORD		VERTICAL DATUM					PLAN CHECK										
																	REVISIONS



R&M Consultants, Inc.
9101 Vanguard Drive
Anchorage, Alaska 99507
907 522 1707 voice
907 522 3404 fax
www.rmconsult.com

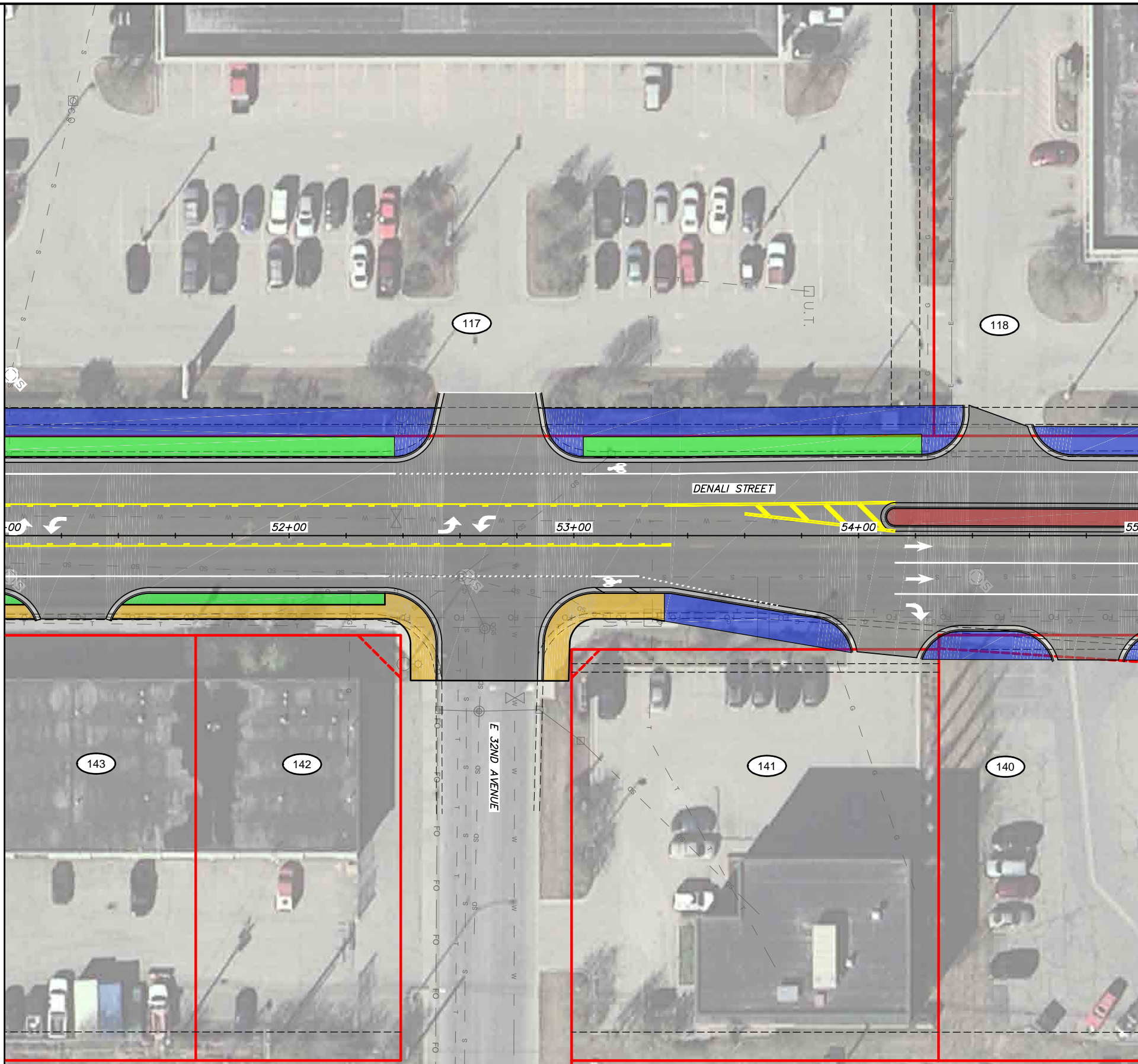


PROJECT MANAGEMENT AND ENGINEERING DEPARTMENT	
16-28	MIDTOWN CORRIDOR IMPROVEMENTS: DENALI STREET AREA - BENSON BLVD TO TUDOR RD DENALI STREET - ALTERNATIVE 2
SCALE 1:20	DATE 8/31/18 GRID 1531 1630 1631 1730 1731 SHEET 29 of 72

File Location: Z:\project\2517.01 MOA PME Denali Street\Civil\ACAD\2517_Plan Denali Alt 2.dwg

Plotted: 8/31/2018 9:25 AM

MATCH LINE DENALI STREET STA. 51+00

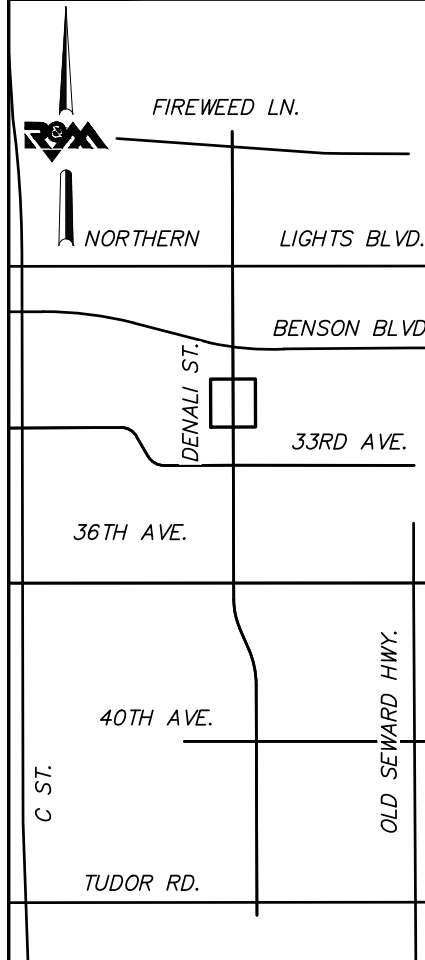


MATCH LINE DENALI STREET STA. 55+00



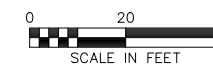
**BEFORE YOU DIG
CALL FOR FREE
UNDERGROUND
LOCATION**

LOCATE CALL CENTER OF ALASKA
STATEWIDE 800-478-3121 WILL
NOTIFY SUBSCRIBED UTILITIES ONLY.
OTHER UTILITIES NEED TO BE
CONTACTED INDIVIDUALLY.



KEYMAP

**DRAFT DSR
AUGUST 2018**



FIELD BOOKS	BM NO.	LOCATION	ELEV.	DATA	DRAWN BY	CHECKED BY	DATA	DRAWN BY	CHECKED BY	REV	DATE	DESCRIPTION	BY	REV	DATE	DESCRIPTION	BY
				BASE			TELEPHONE										
				TOPOGRAPHY			ELECTRIC										
				PROFILE			CABLE TV										
				SANITARY SEWER			DESIGN										
				STORM SEWER			QUANTITIES										
				WATER			MUN. FINAL CHK.										
				GAS													
CONTRACTOR	BASIS OF THIS DATUM																
INSPECTOR																	
CONSTRUCTION RECORD		VERTICAL DATUM				PLAN CHECK											



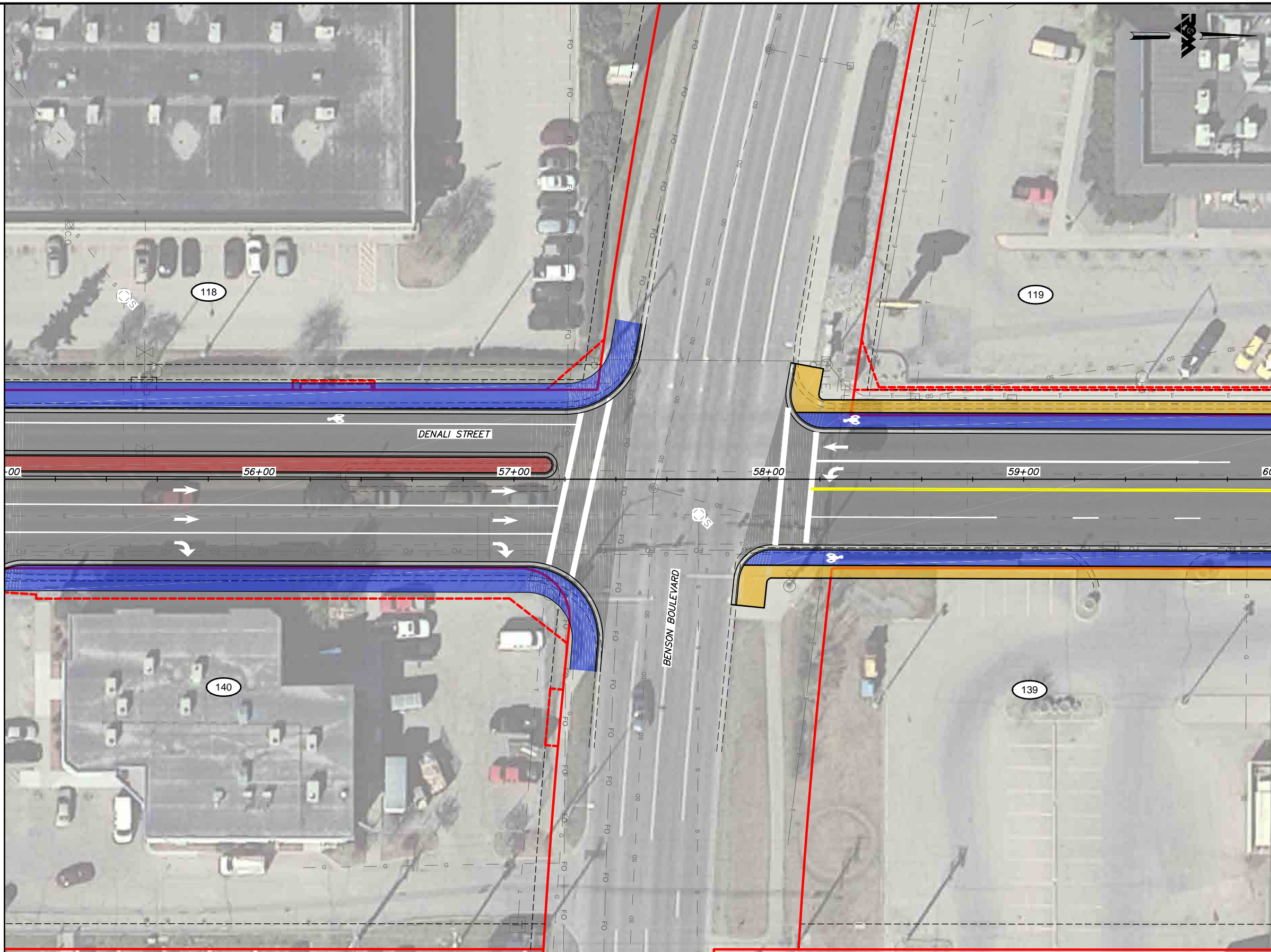
R&M Consultants, Inc.
9101 Vanguard Drive
Anchorage, Alaska 99507
907 522 1707 voice
907 522 3404 fax
www.rmconsult.com



PROJECT MANAGEMENT AND ENGINEERING DEPARTMENT	
16-28	MIDTOWN CORRIDOR IMPROVEMENTS: DENALI STREET AREA - BENSON BLVD TO TUDOR RD DENALI STREET - ALTERNATIVE 2
SCALE 1:20	DATE 8/31/18 GRID 1531 1630 1631 1730 1731 SHEET 30 of 72

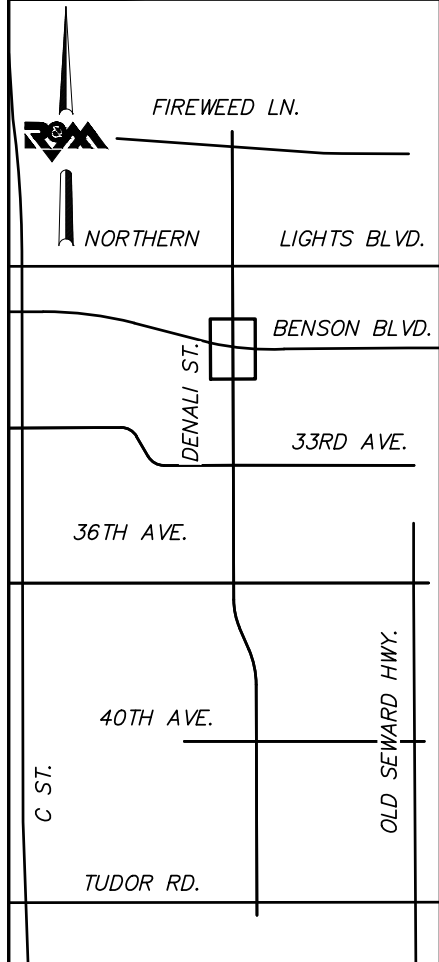
MATCH LINE DENALI STREET STA. 55+00

MATCH LINE DENALI STREET STA. 60+00



**BEFORE YOU DIG
CALL FOR FREE
UNDERGROUND
LOCATION**

LOCATE CALL CENTER OF ALASKA
STATEWIDE 800-478-3121 WILL
NOTIFY SUBSCRIBED UTILITIES ONLY.
OTHER UTILITIES NEED TO BE
CONTACTED INDIVIDUALLY.



KEYMAP

**DRAFT DSR
AUGUST 2018**



FIELD BOOKS	BM NO.	LOCATION	ELEV.	DATA	DRAWN BY	CHECKED BY	DATA	DRAWN BY	CHECKED BY	REV	DATE	DESCRIPTION	BY	REV	DATE	DESCRIPTION	BY
DESIGN				BASE			TELEPHONE										
				TOPOGRAPHY			ELECTRIC										
				PROFILE			CABLE TV										
				SANITARY SEWER			DESIGN										
				STORM SEWER			QUANTITIES										
CONTRACTOR	BASIS OF THIS DATUM			WATER			MUN. FINAL CHK.										
INSPECTOR				GAS													
CONSTRUCTION RECORD	VERTICAL DATUM			PLAN CHECK				REVISIONS				CONSULTANT		SEAL			

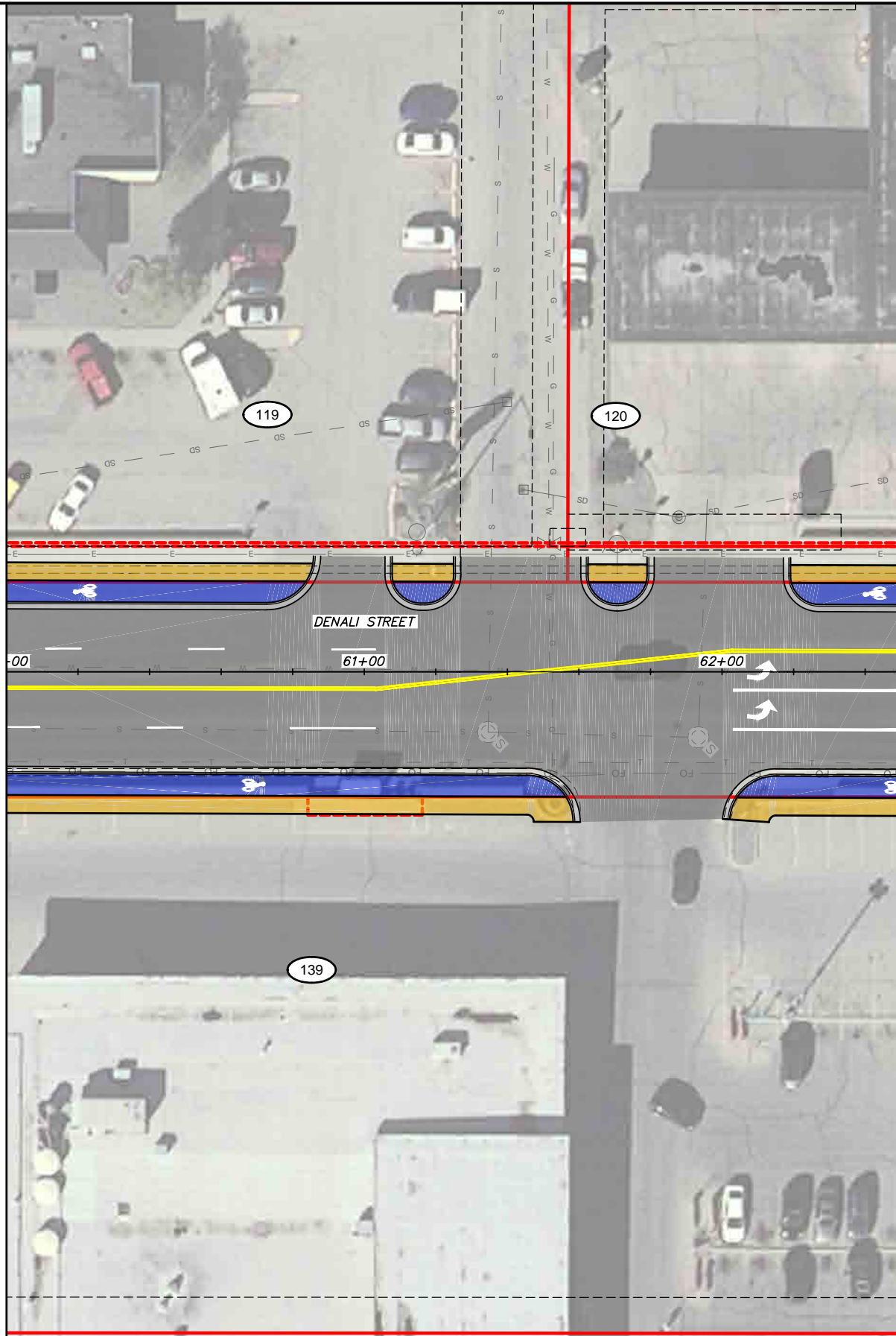


R&M Consultants, Inc.
9101 Vanguard Drive
Anchorage, Alaska 99507
907 522 1707 voice
907 522 3404 fax
www.rmconsult.com



PROJECT MANAGEMENT AND ENGINEERING DEPARTMENT	
16-28	MIDTOWN CORRIDOR IMPROVEMENTS: DENALI STREET AREA - BENSON BLVD TO TUDOR RD DENALI STREET - ALTERNATIVE 2
SCALE 1:20	DATE 8/31/18 GRID 1531 1630 1631 1730 1731 SHEET 31 of 72

MATCH LINE DENALI STREET STA. 60+00



MATCH LINE DENALI STREET STA. 62+50



**BEFORE YOU DIG
CALL FOR FREE
UNDERGROUND
LOCATION**

LOCATE CALL CENTER OF ALASKA
STATEWIDE 800-478-3121 WILL
NOTIFY SUBSCRIBED UTILITIES ONLY.
OTHER UTILITIES NEED TO BE
CONTACTED INDIVIDUALLY.



KEYMAP

**DRAFT DSR
AUGUST 2018**



FIELD BOOKS	BM NO.	LOCATION	ELEV.	DATA	DRAWN BY	CHECKED BY	DATA	DRAWN BY	CHECKED BY	REV	DATE	DESCRIPTION	BY	REV	DATE	DESCRIPTION	BY
				BASE			TELEPHONE										
				TOPOGRAPHY			ELECTRIC										
				PROFILE			CABLE TV										
				SANITARY SEWER			DESIGN										
				STORM SEWER			QUANTITIES										
				WATER			MUN. FINAL CHK.										
				GAS													
CONTRACTOR				BASIS OF THIS DATUM				REVISIONS				CONSULTANT					
INSPECTOR				CONSTRUCTION RECORD				PLAN CHECK				SEAL					
VERTICAL DATUM				REVISIONS				CONSULTANT				SEAL					



R&M Consultants, Inc.
9101 Vanguard Drive
Anchorage, Alaska 99507
907 522 1707 voice
907 522 3404 fax
www.rmconsult.com

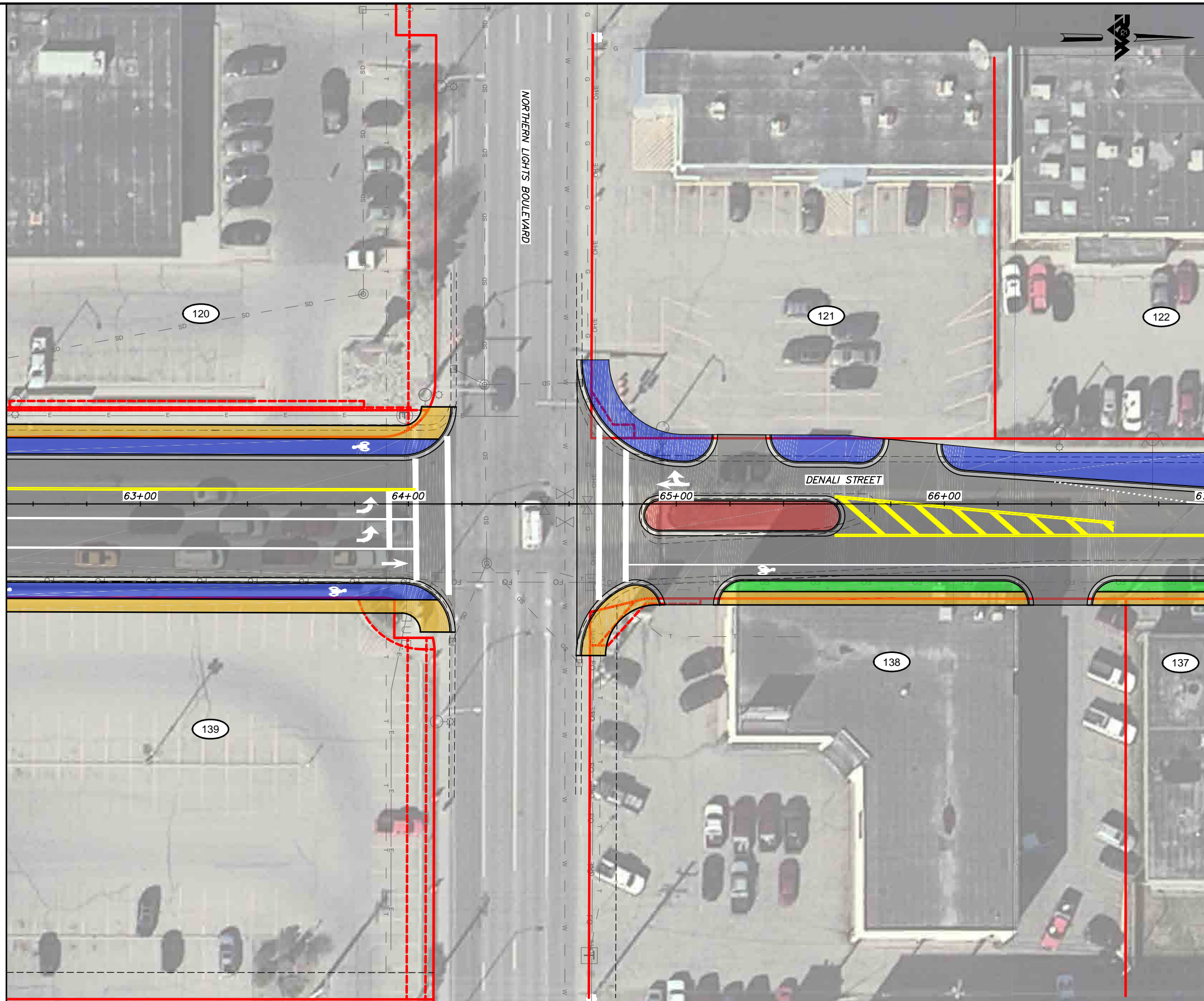


PROJECT MANAGEMENT AND ENGINEERING DEPARTMENT	
16-28	MIDTOWN CORRIDOR IMPROVEMENTS: DENALI STREET AREA - BENSON BLVD TO TUDOR RD DENALI STREET - ALTERNATIVE 2
SCALE 1:20	DATE 8/31/18 GRID 1531 1630 1631 1730 1731 SHEET 32 of 72

File Location: Z:\project\2517.01 MOA PME Denali Street\Civil\ACAD\2517_Plan Denali Alt 2.dwg

Plotted: 8/31/2018 9:26 AM

MATCH LINE DENALI STREET STA. 62+50

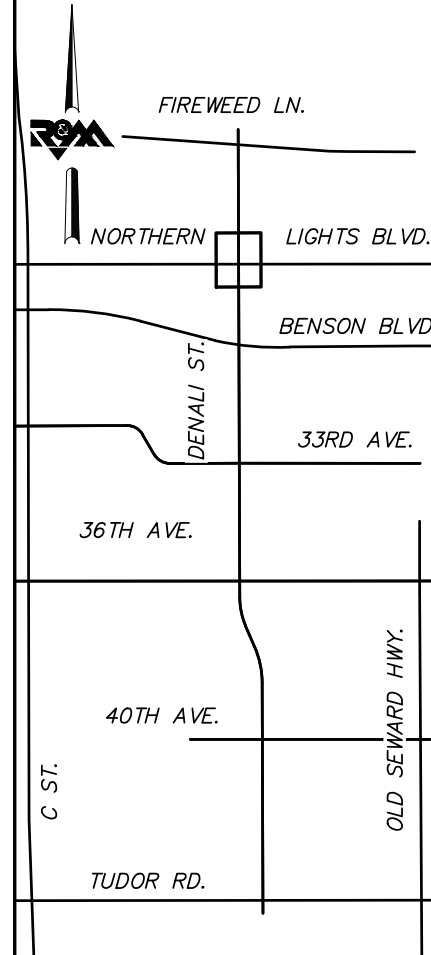


MATCH LINE DENALI STREET STA. 67+00



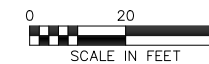
**BEFORE YOU DIG
CALL FOR FREE
UNDERGROUND
LOCATION**

LOCATE CALL CENTER OF ALASKA
STATEWIDE 800-478-3121 WILL
NOTIFY SUBSCRIBED UTILITIES ONLY.
OTHER UTILITIES NEED TO BE
CONTACTED INDIVIDUALLY.



KEYMAP

**DRAFT DSR
AUGUST 2018**



FIELD BOOKS	BM NO.	LOCATION	ELEV.	DATA	DRAWN BY	CHECKED BY	DATA	DRAWN BY	CHECKED BY	REV	DATE	DESCRIPTION	BY	REV	DATE	DESCRIPTION	BY
DESIGN				BASE TOPOGRAPHY PROFILE SANITARY SEWER STORM SEWER WATER GAS			TELEPHONE ELECTRIC CABLE TV DESIGN QUANTITIES MUN. FINAL CHK.										
CONTRACTOR	BASIS OF THIS DATUM																
INSPECTOR																	
CONSTRUCTION RECORD		VERTICAL DATUM					PLAN CHECK										
																	REVISIONS

R&M Consultants, Inc.
9101 Vanguard Drive
Anchorage, Alaska 99507
907 522 1707 voice
907 522 3404 fax
www.rmconsult.com

SEAL

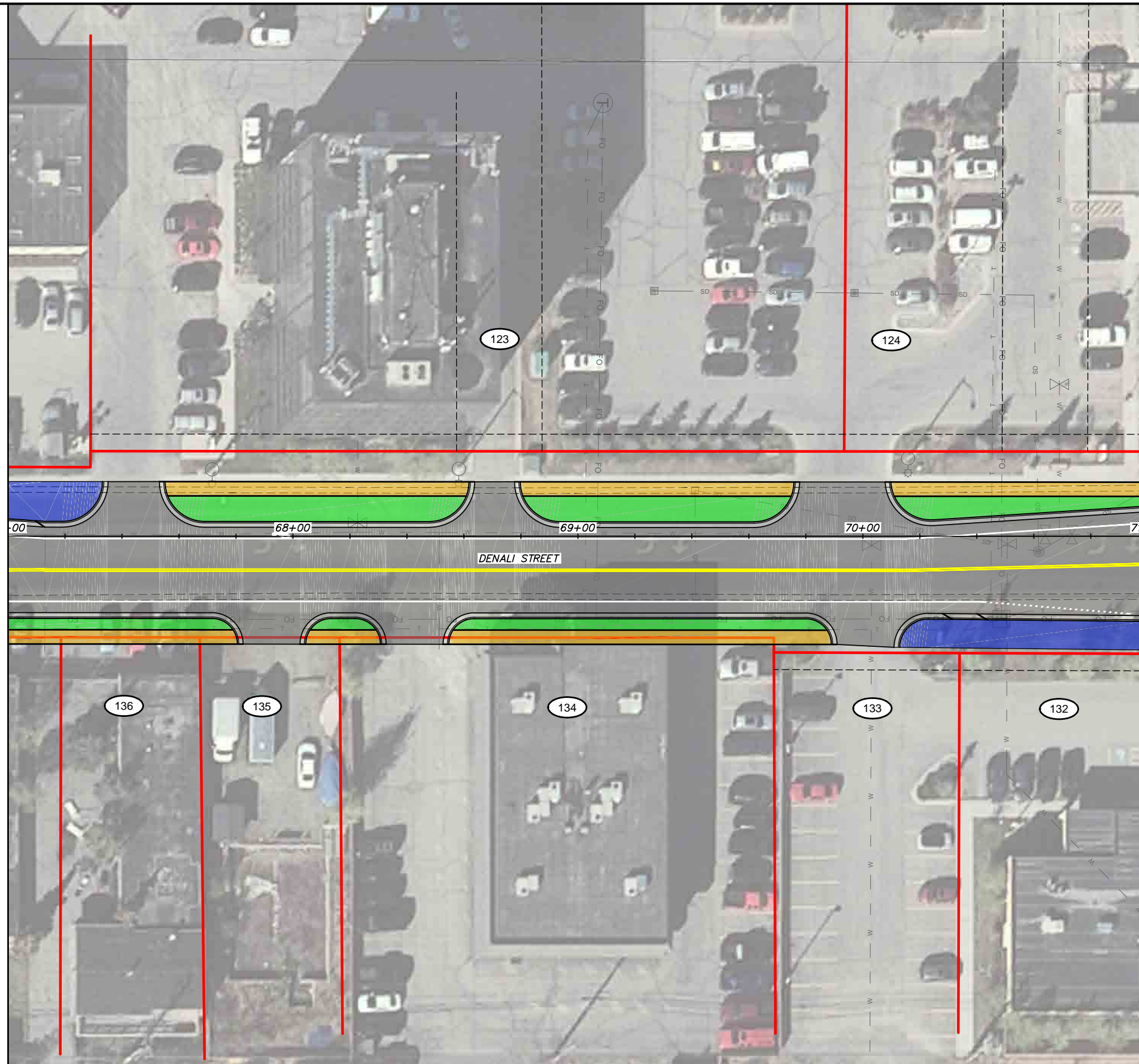


PROJECT MANAGEMENT AND ENGINEERING DEPARTMENT	
16-28	MIDTOWN CORRIDOR IMPROVEMENTS: DENALI STREET AREA - BENSON BLVD TO TUDOR RD DENALI STREET - ALTERNATIVE 2
SCALE 1:20	DATE 8/31/18 GRID 1531 1630 1631 1730 1731 SHEET 33 of 72
ACCT. NO.	

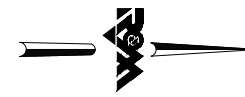
File Location: Z:\project\2517.01 MOA PME Denali Street\Civil\ACAD\2517_Plan_Denali_Alt_2.dwg

Plotted: 8/31/2018 9:26 AM

MATCH LINE DENALI STREET STA. 67+00

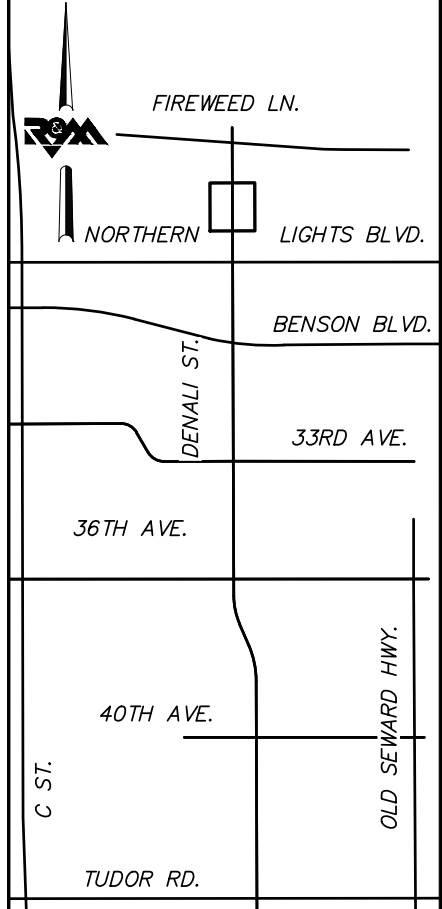


MATCH LINE DENALI STREET STA. 71+00



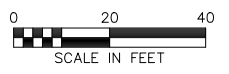
**BEFORE YOU DIG
CALL FOR FREE
UNDERGROUND
LOCATION**

LOCATE CALL CENTER OF ALASKA
STATEWIDE 800-478-3121 WILL
NOTIFY SUBSCRIBED UTILITIES ONLY.
OTHER UTILITIES NEED TO BE
CONTACTED INDIVIDUALLY.



KEYMAP

**DRAFT DSR
AUGUST 2018**



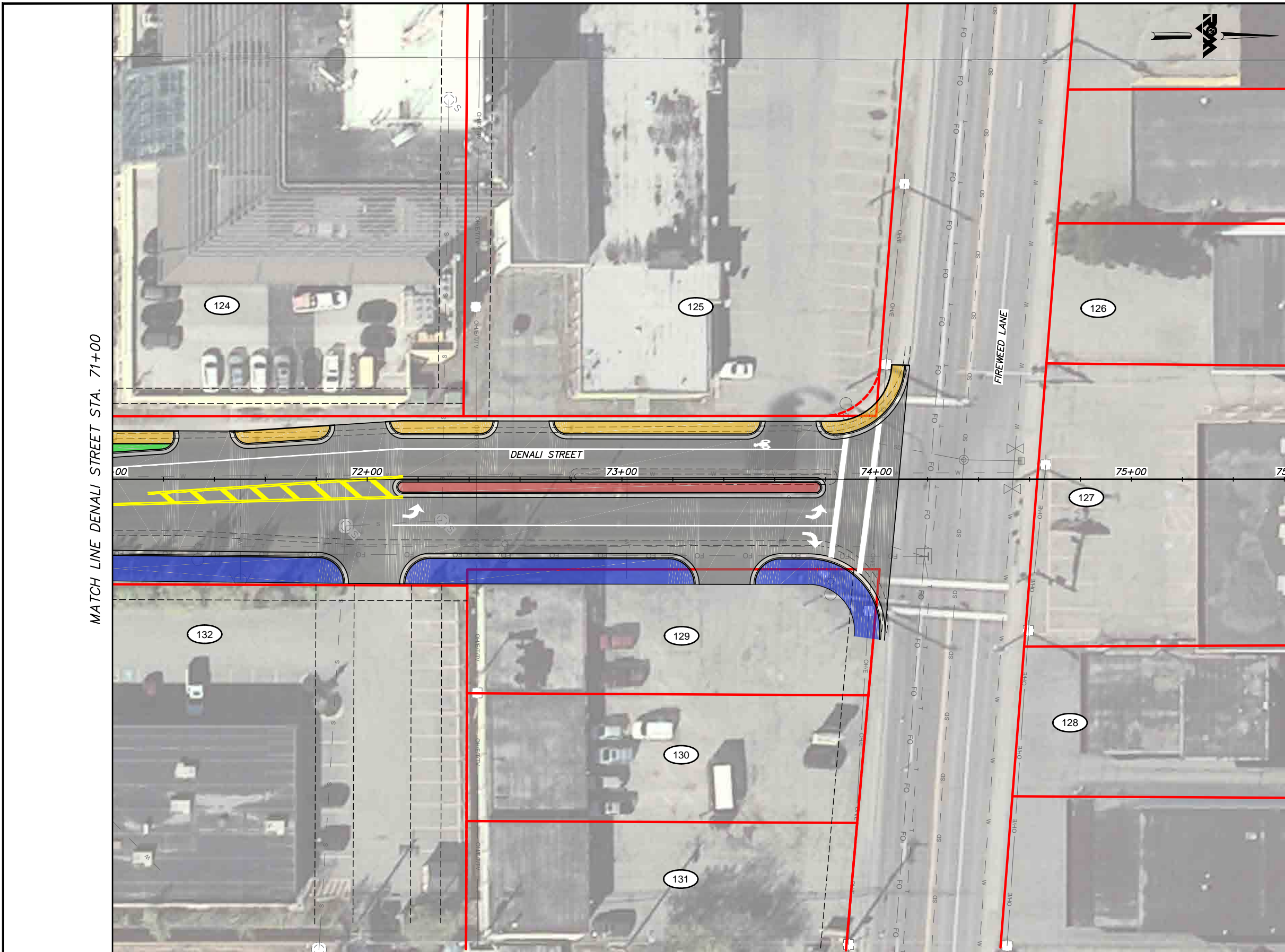
FIELD BOOKS	BM NO.	LOCATION	ELEV.	DATA	DRAWN BY	CHECKED BY	DATA	DRAWN BY	CHECKED BY	REV	DATE	DESCRIPTION	BY	REV	DATE	DESCRIPTION	BY
DESIGN				BASE			TELEPHONE										
				TOPOGRAPHY			ELECTRIC										
				PROFILE			CABLE TV										
				SANITARY SEWER			DESIGN										
				STORM SEWER			QUANTITIES										
				WATER			MUN. FINAL CHK.										
				GAS													
CONTRACTOR				BASIS OF THIS DATUM													
INSPECTOR				CONSTRUCTION RECORD				VERTICAL DATUM				PLAN CHECK					
								REVISIONS									



PROJECT MANAGEMENT AND ENGINEERING DEPARTMENT	
16-28	MIDTOWN CORRIDOR IMPROVEMENTS: DENALI STREET AREA - BENSON BLVD TO TUDOR RD DENALI STREET - ALTERNATIVE 2
SCALE 1:20	DATE 8/31/18 GRID 1531 1630 1631 1730 1731 SHEET 34 of 72
CONSTRUCTION RECORD	VERTICAL DATUM

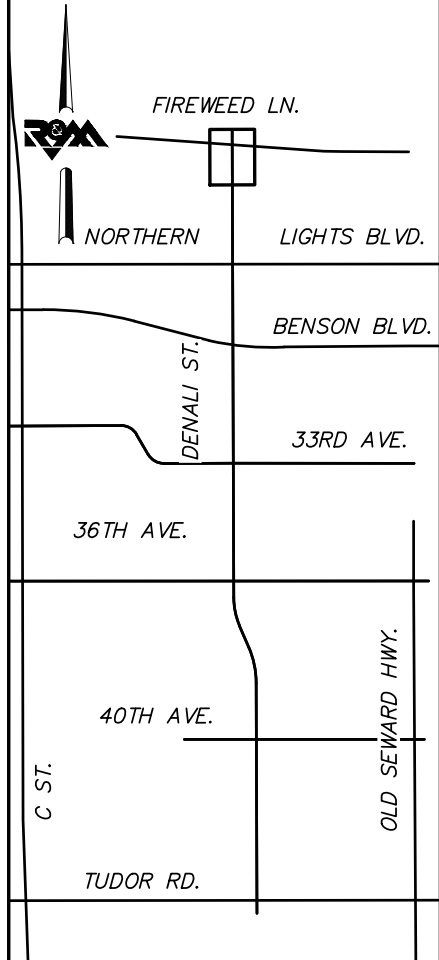
File Location: Z:\project\2517.01 MOA PME Denali Street\Civil\ACAD\2517_Plan Denali Alt 2.dwg

Plotted: 8/31/2018 9:26 AM



**BEFORE YOU DIG
CALL FOR FREE
UNDERGROUND
LOCATION**

LOCATE CALL CENTER OF ALASKA
STATEWIDE 800-478-3121 WILL
NOTIFY SUBSCRIBED UTILITIES ONLY.
OTHER UTILITIES NEED TO BE
CONTACTED INDIVIDUALLY.



KEYMAP

**DRAFT DSR
AUGUST 2018**



FIELD BOOKS	BM NO.	LOCATION	ELEV.	DATA	DRAWN BY	CHECKED BY	DATA	DRAWN BY	CHECKED BY	REV	DATE	DESCRIPTION	BY	REV	DATE	DESCRIPTION	BY
DESIGN				BASE TOPOGRAPHY PROFILE SANITARY SEWER STORM SEWER WATER GAS			TELEPHONE ELECTRIC CABLE TV DESIGN QUANTITIES MUN. FINAL CHK.										
CONTRACTOR	BASIS OF THIS DATUM																
INSPECTOR																	
CONSTRUCTION RECORD		VERTICAL DATUM					PLAN CHECK										

R&M Consultants, Inc.
9101 Vanguard Drive
Anchorage, Alaska 99507
907 522 1707 voice
907 522 3404 fax
www.rmconsult.com

SEAL



PROJECT MANAGEMENT AND
ENGINEERING DEPARTMENT

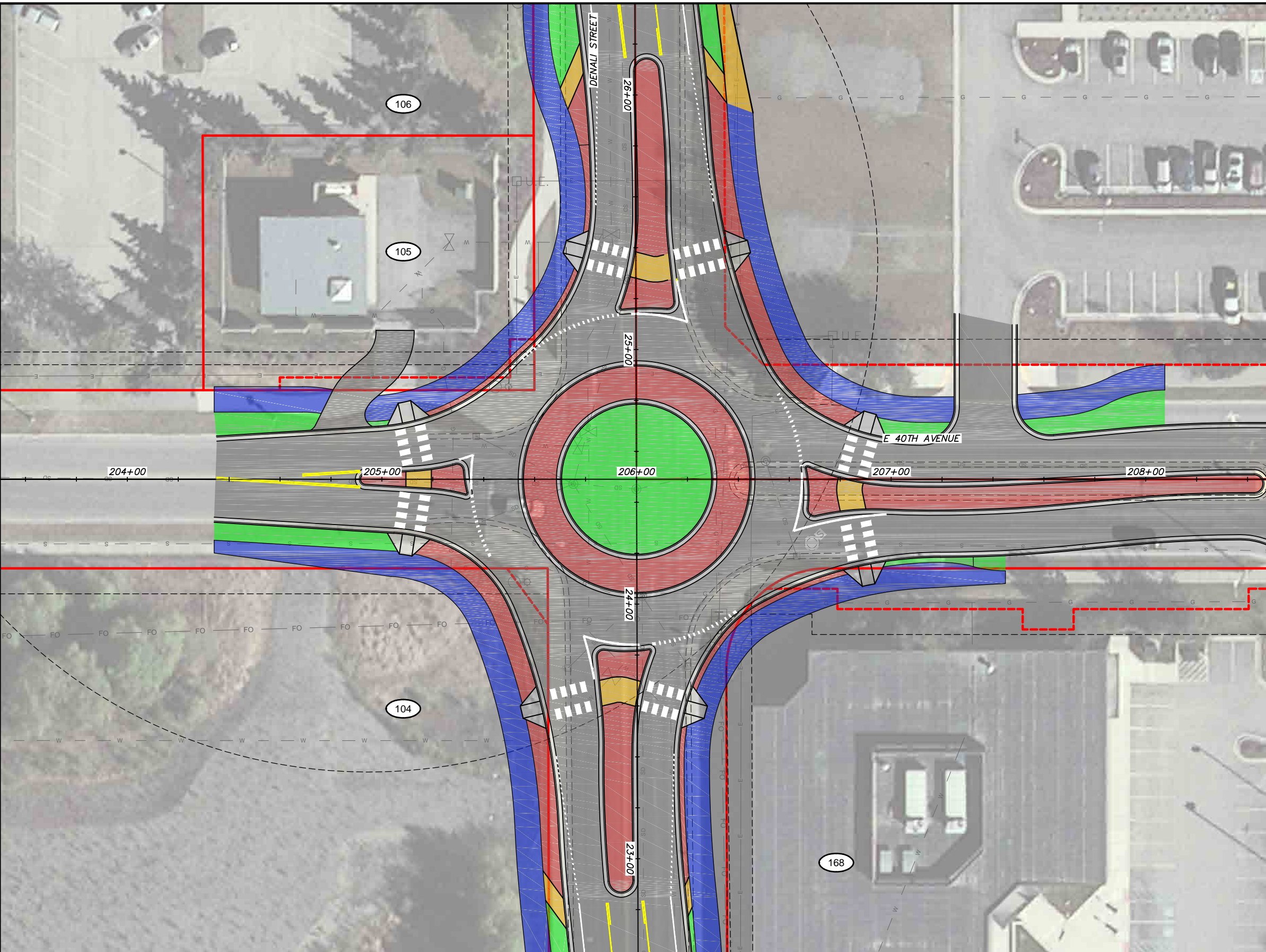
16-28 MIDTOWN CORRIDOR IMPROVEMENTS:
DENALI STREET AREA - BENSON
BLVD TO TUDOR RD
DENALI STREET - ALTERNATIVE 2

SCALE 1:20 DATE 8/31/18 GRID 1531 1630 1631
ACCT. NO. 1730 1731 SHEET 35 of 72

File Location: Z:\project\2517.01 MOA PME Denali Street\CAD\2517_Plan_Denali Alt 2.dwg

Plotted: 8/31/2018 9:26 AM

MATCH LINE E 40TH AVENUE STA. 203+50

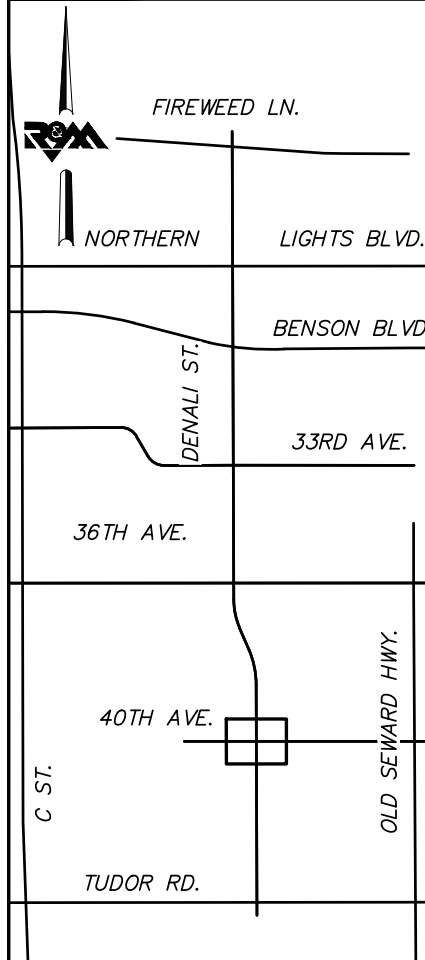


MATCH LINE E 36TH AVENUE STA. 208+50



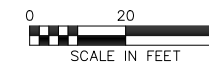
**BEFORE YOU DIG
CALL FOR FREE
UNDERGROUND
LOCATION**

LOCATE CALL CENTER OF ALASKA
STATEWIDE 800-478-3121 WILL
NOTIFY SUBSCRIBED UTILITIES ONLY.
OTHER UTILITIES NEED TO BE
CONTACTED INDIVIDUALLY.



KEYMAP

**DRAFT DSR
AUGUST 2018**



FIELD BOOKS	BM NO.	LOCATION	ELEV.	DATA	DRAWN BY	CHECKED BY	DATA	DRAWN BY	CHECKED BY	REV	DATE	DESCRIPTION	BY	REV	DATE	DESCRIPTION	BY	
DESIGN				BASE			TELEPHONE											
				TOPOGRAPHY			ELECTRIC											
				PROFILE			CABLE TV											
				SANITARY SEWER			DESIGN											
				STORM SEWER			QUANTITIES											
CONTRACTOR	BASIS OF THIS DATUM			WATER			MUN. FINAL CHK.											
INSPECTOR				GAS														
CONSTRUCTION RECORD		VERTICAL DATUM				PLAN CHECK										REVISIONS		



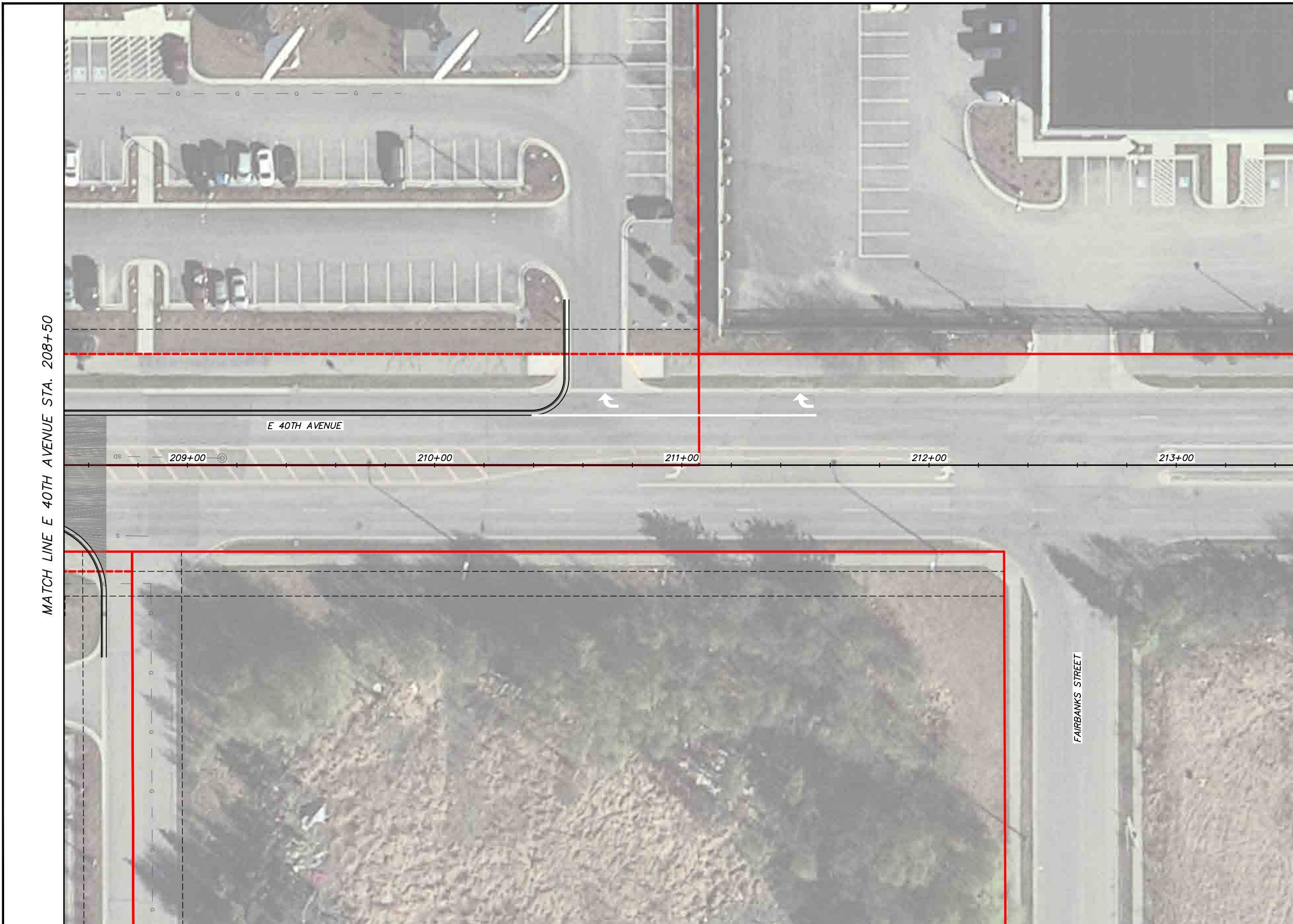
R&M Consultants, Inc.
9101 Vanguard Drive
Anchorage, Alaska 99507
907 522 1707 voice
907 522 3404 fax
www.rmconsult.com



PROJECT MANAGEMENT AND ENGINEERING DEPARTMENT	
16-28	MIDTOWN CORRIDOR IMPROVEMENTS: DENALI STREET AREA - BENSON BLVD TO TUDOR RD DENALI STREET - ALTERNATIVE 2
SCALE 1:20	DATE 8/31/18 GRID 1531 1630 1631 1730 1731 SHEET 36 of 72

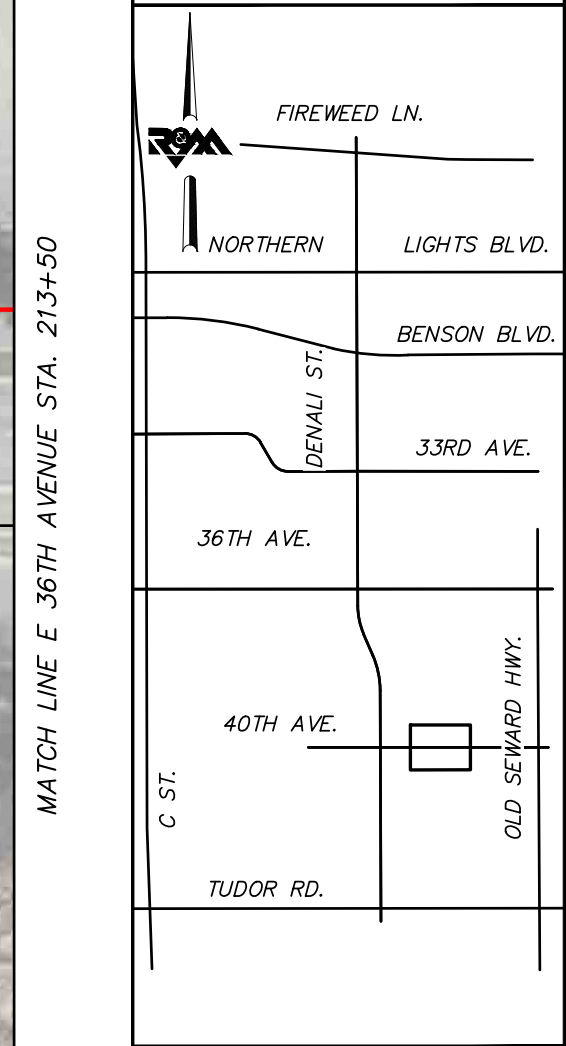
File Location: Z:\project\2517.01 MOA PME Denali Street\Civil\ACAD\2517_Plan_Denali_Alt_2.dwg

Plotted: 8/31/2018 9:26 AM



**BEFORE YOU DIG
CALL FOR FREE
UNDERGROUND
LOCATION**

LOCATE CALL CENTER OF ALASKA
STATEWIDE 800-478-3121 WILL
NOTIFY SUBSCRIBED UTILITIES ONLY.
OTHER UTILITIES NEED TO BE
CONTACTED INDIVIDUALLY.



KEYMAP

**DRAFT DSR
AUGUST 2018**

0 20 40
SCALE IN FEET

FIELD BOOKS	BM NO.	LOCATION	ELEV.	DATA	DRAWN BY	CHECKED BY	DATA	DRAWN BY	CHECKED BY	REV	DATE	DESCRIPTION	BY	REV	DATE	DESCRIPTION	BY		
				BASE			TELEPHONE												
				TOPOGRAPHY			ELECTRIC												
				PROFILE			CABLE TV												
				SANITARY SEWER			DESIGN												
				STORM SEWER			QUANTITIES												
				WATER			MUN. FINAL CHK.												
				GAS															
CONTRACTOR	BASIS OF THIS DATUM																		
INSPECTOR																			
CONSTRUCTION RECORD	VERTICAL DATUM			PLAN CHECK				REVISIONS				CONSULTANT				SEAL			

R&M Consultants, Inc.
9101 Vanguard Drive
Anchorage, Alaska 99507
907 522 1707 voice
907 522 3404 fax
www.rmconsult.com



PROJECT MANAGEMENT AND
ENGINEERING DEPARTMENT

16-28 MIDTOWN CORRIDOR IMPROVEMENTS:
DENALI STREET AREA - BENSON
BLVD TO TUDOR RD
DENALI STREET - ALTERNATIVE 2

SCALE 1:20 DATE 8/31/18 GRID 1531 1630 1631
ACCT. NO. 1730 1731 SHEET 37 of 72

