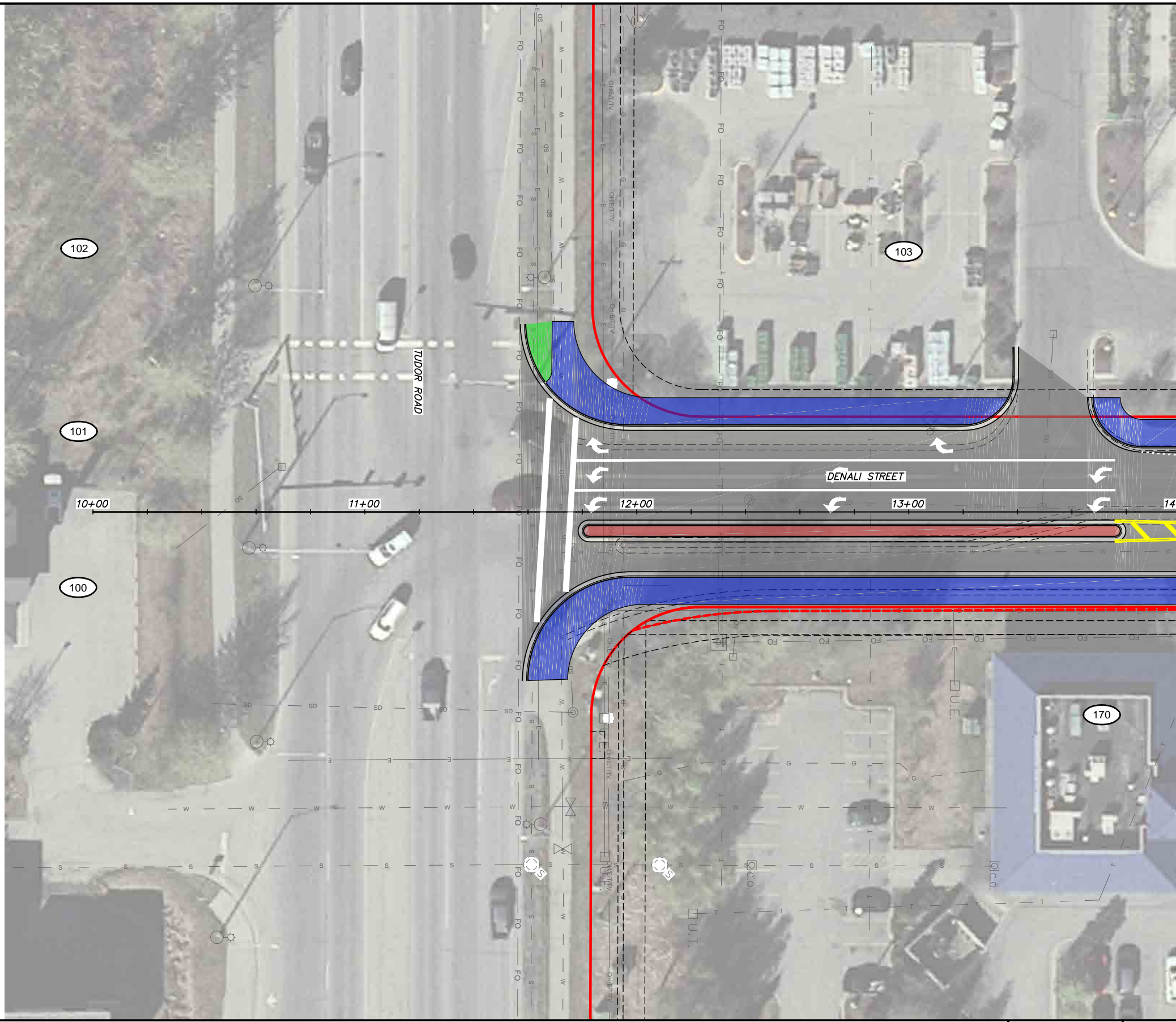
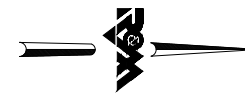


File Location: Z:\project\2517.01 MOA PME Denali Street\Civil\ACAD\2517\_Plan\_Denali\_Alt\_3.dwg

Plotted: 8/31/2018 9:28 AM

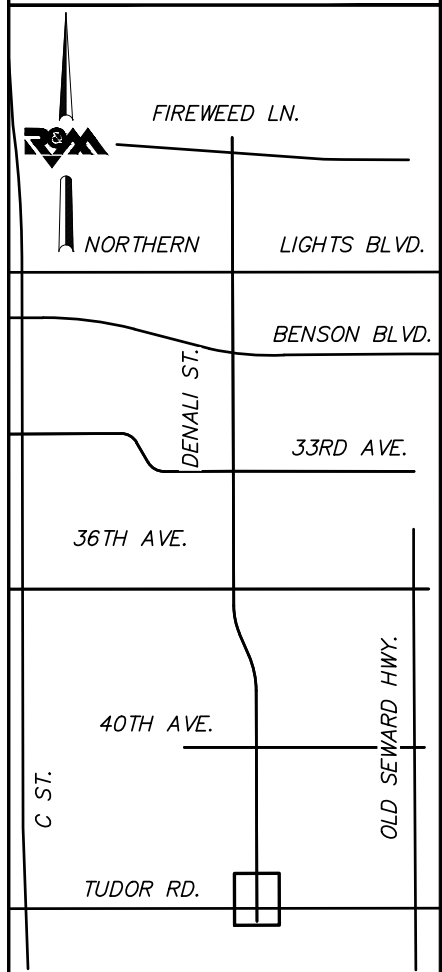


MATCH LINE DENALI STREET STA. 14+00



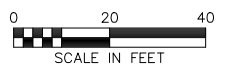
BEFORE YOU DIG  
CALL FOR FREE  
UNDERGROUND  
LOCATION

LOCATE CALL CENTER OF ALASKA  
STATEWIDE ..... 800-478-3121 WILL  
NOTIFY SUBSCRIBED UTILITIES ONLY.  
OTHER UTILITIES NEED TO BE  
CONTACTED INDIVIDUALLY.



KEYMAP

**DRAFT DSR  
AUGUST 2018**



FIELD BOOKS	BM NO.	LOCATION	ELEV.	DATA	DRAWN BY	CHECKED BY	DATA	DRAWN BY	CHECKED BY	REV	DATE	DESCRIPTION	BY	REV	DATE	DESCRIPTION	BY
DESIGN				BASE			TELEPHONE										
				TOPOGRAPHY			ELECTRIC										
				PROFILE			CABLE TV										
				SANITARY SEWER			DESIGN										
				STORM SEWER			QUANTITIES										
CONTRACTOR	BASIS OF THIS DATUM			WATER			MUN. FINAL CHK.										
INSPECTOR				GAS													
CONSTRUCTION RECORD	VERTICAL DATUM			PLAN CHECK				REVISIONS				CONSULTANT		SEAL			



R&M Consultants, Inc.  
9101 Vanguard Drive  
Anchorage, Alaska 99507  
907 522 1707 voice  
907 522 3404 fax  
www.rmconsult.com

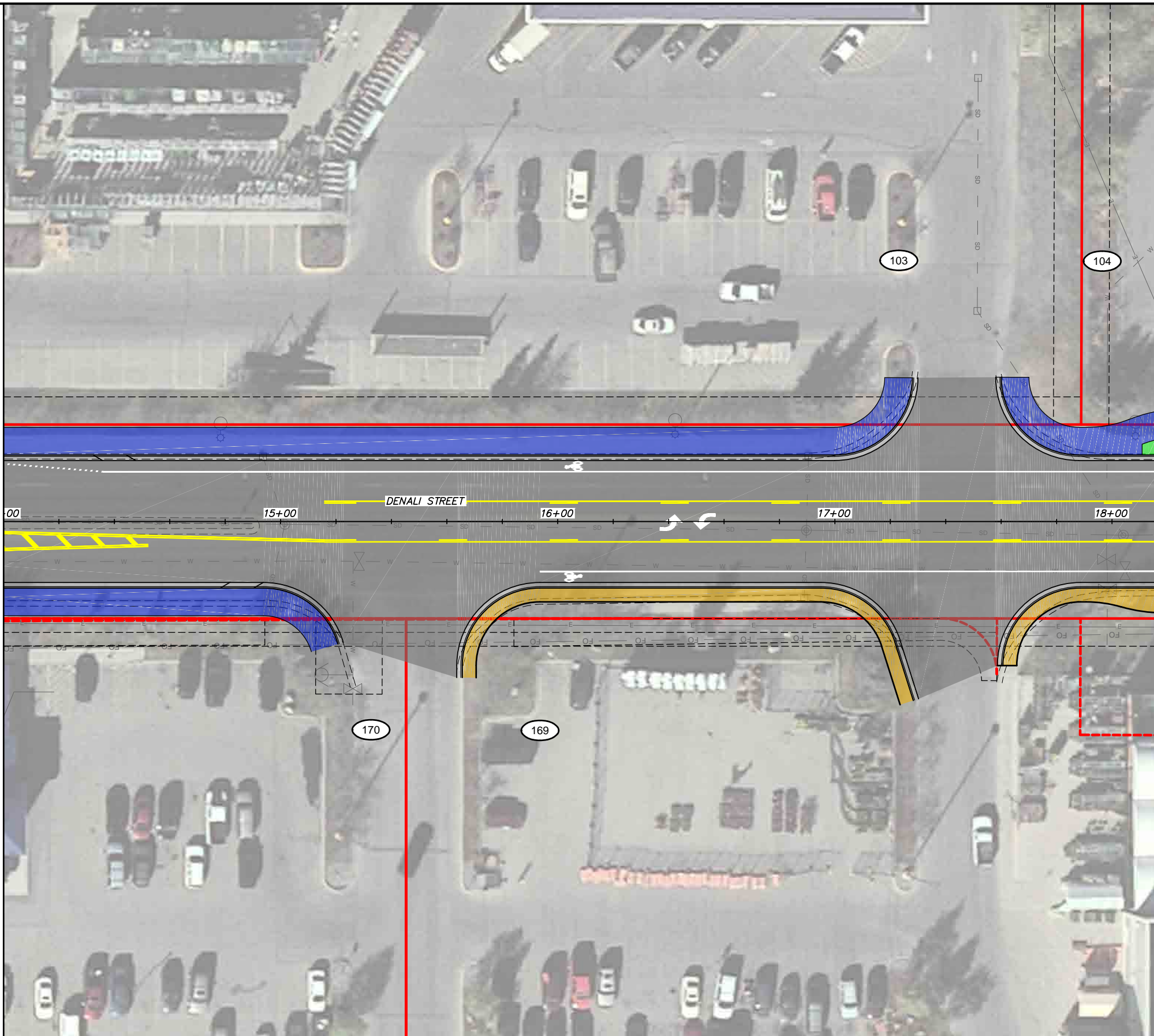


PROJECT MANAGEMENT AND ENGINEERING DEPARTMENT	
16-28	MIDTOWN CORRIDOR IMPROVEMENTS: DENALI STREET AREA - BENSON BLVD TO TUDOR RD  DENALI STREET - ALTERNATIVE 3
SCALE 1:20	DATE 8/31/18 GRID 1531 1630 1631 1730 1731 SHEET 39 of 72

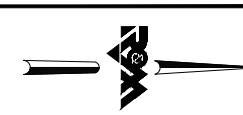
File Location: Z:\project\2517.01 MOA PME Denali Street\Civil\ACAD\2517\_Plan Denali Alt 3.dwg

Plotted: 8/31/2018 9:28 AM

MATCH LINE DENALI STREET STA. 14+00



MATCH LINE DENALI STREET STA. 18+20



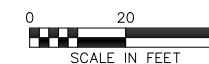
**BEFORE YOU DIG  
CALL FOR FREE  
UNDERGROUND  
LOCATION**

LOCATE CALL CENTER OF ALASKA  
STATEWIDE ..... 800-478-3121 WILL  
NOTIFY SUBSCRIBED UTILITIES ONLY.  
OTHER UTILITIES NEED TO BE  
CONTACTED INDIVIDUALLY.



KEYMAP

**DRAFT DSR  
AUGUST 2018**



FIELD BOOKS	BM NO.	LOCATION	ELEV.	DATA	DRAWN BY	CHECKED BY	DATA	DRAWN BY	CHECKED BY	REV	DATE	DESCRIPTION	BY	REV	DATE	DESCRIPTION	BY
DESIGN				BASE TOPOGRAPHY PROFILE SANITARY SEWER STORM SEWER WATER GAS			TELEPHONE ELECTRIC CABLE TV DESIGN QUANTITIES MUN. FINAL CHK.										
CONTRACTOR	BASIS OF THIS DATUM																
INSPECTOR																	
CONSTRUCTION RECORD		VERTICAL DATUM					PLAN CHECK										
																	REVISIONS

R&M Consultants, Inc.  
9101 Vanguard Drive  
Anchorage, Alaska 99507  
907 522 1707 voice  
907 522 3404 fax  
www.rmconsult.com



PROJECT MANAGEMENT AND ENGINEERING DEPARTMENT	
16-28	MIDTOWN CORRIDOR IMPROVEMENTS: DENALI STREET AREA - BENSON BLVD TO TUDOR RD  DENALI STREET - ALTERNATIVE 3
SCALE 1:20	DATE 8/31/18 GRID 1531 1630 1631 1730 1731 SHEET 40 of 72

File Location: Z:\project\2517.01 MOA PME Denali Street\Civil\ACAD\2517\_Plan Denali Alt 3.dwg

Plotted: 8/31/2018 9:29 AM

MATCH LINE DENALI STREET STA. 18+20

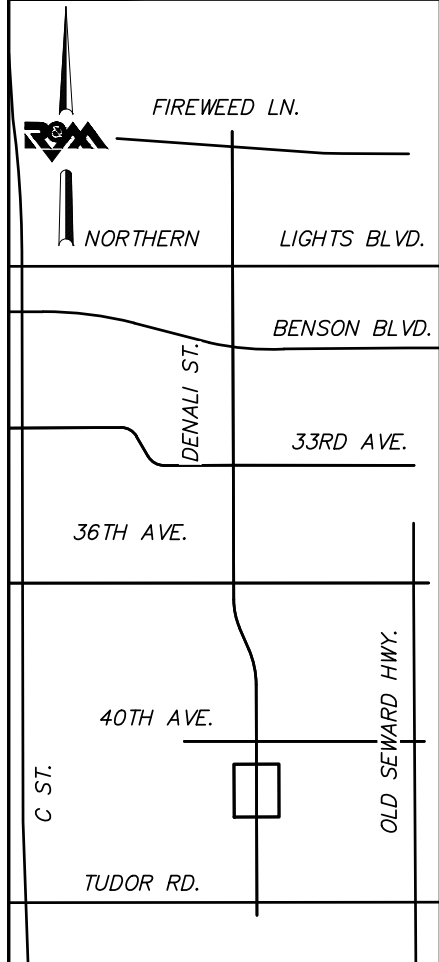


MATCH LINE DENALI STREET STA. 22+60



**BEFORE YOU DIG  
CALL FOR FREE  
UNDERGROUND  
LOCATION**

LOCATE CALL CENTER OF ALASKA  
STATEWIDE ..... 800-478-3121 WILL  
NOTIFY SUBSCRIBED UTILITIES ONLY.  
OTHER UTILITIES NEED TO BE  
CONTACTED INDIVIDUALLY.



**KEYMAP**

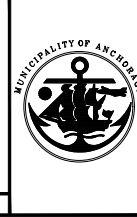
**DRAFT DSR  
AUGUST 2018**



FIELD BOOKS	BM NO.	LOCATION	ELEV.	DATA	DRAWN BY	CHECKED BY	DATA	DRAWN BY	CHECKED BY	REV	DATE	DESCRIPTION	BY	REV	DATE	DESCRIPTION	BY
DESIGN				BASE TOPOGRAPHY PROFILE SANITARY SEWER STORM SEWER WATER GAS			TELEPHONE ELECTRIC CABLE TV DESIGN QUANTITIES MUN. FINAL CHK.										
CONTRACTOR	BASIS OF THIS DATUM																
INSPECTOR																	
CONSTRUCTION RECORD		VERTICAL DATUM					PLAN CHECK										
																	REVISIONS

R&M Consultants, Inc.  
9101 Vanguard Drive  
Anchorage, Alaska 99507  
907 522 1707 voice  
907 522 3404 fax  
www.rmconsult.com

SEAL



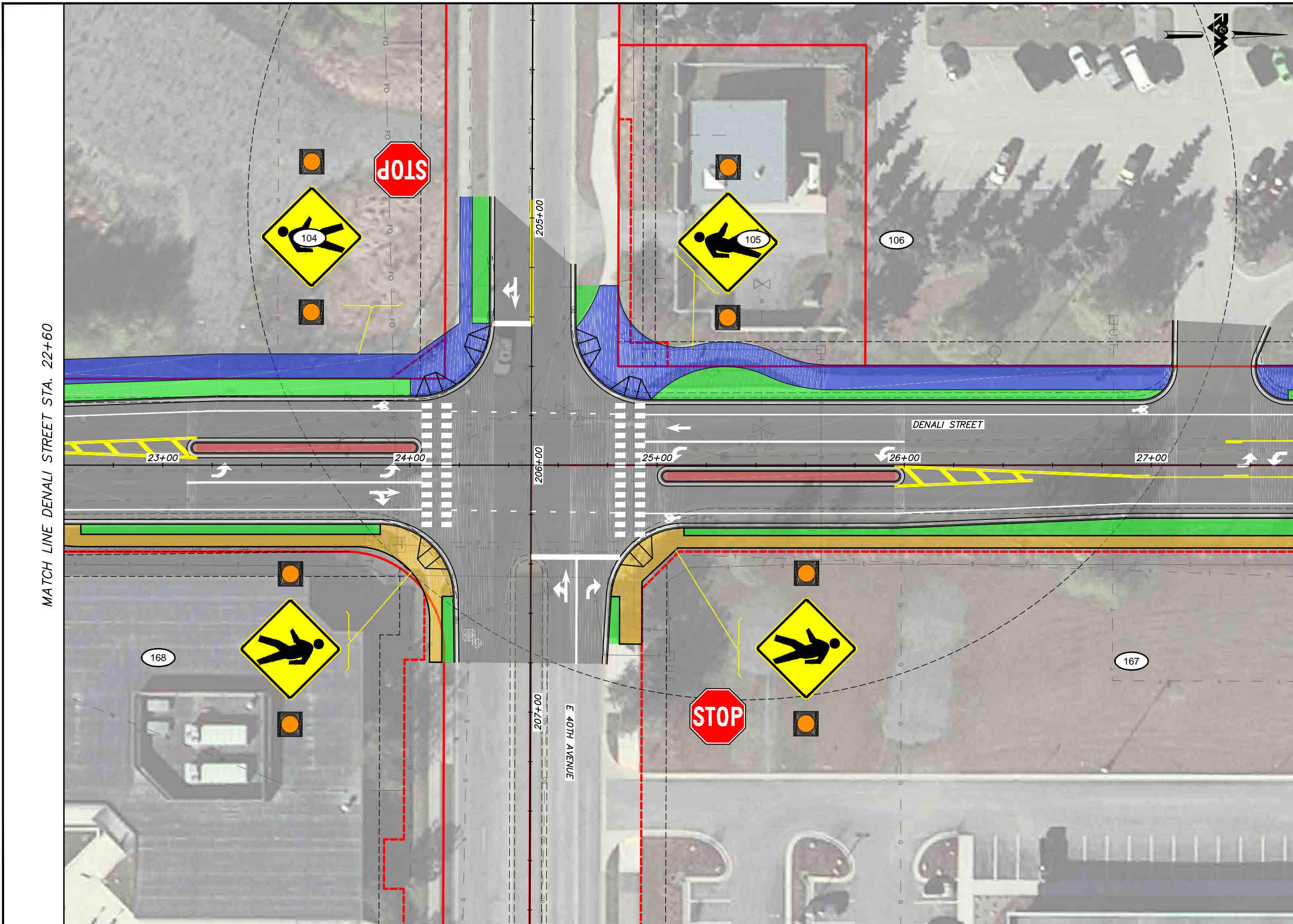
PROJECT MANAGEMENT AND  
ENGINEERING DEPARTMENT

16-28 MIDTOWN CORRIDOR IMPROVEMENTS:  
DENALI STREET AREA - BENSON  
BLVD TO TUDOR RD  
DENALI STREET - ALTERNATIVE 3

SCALE 1:20 DATE 8/31/18 GRID 1531 1630 1631  
ACCT. NO. 1730 1731 SHEET 41 of 72

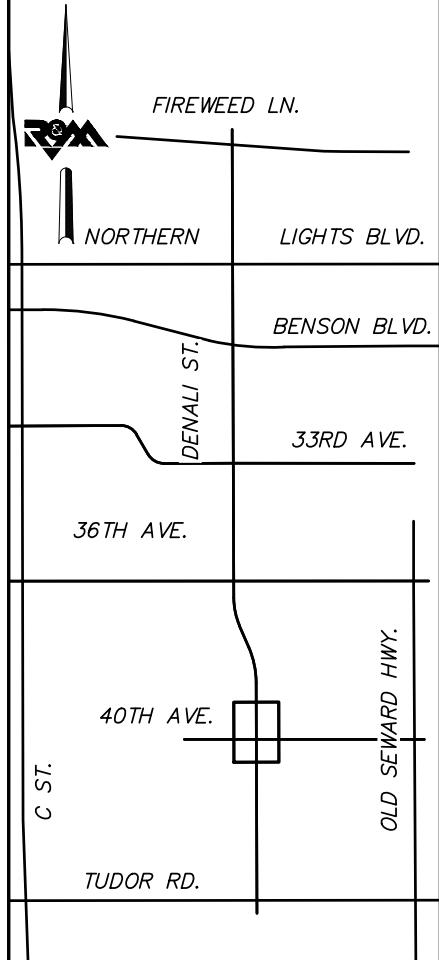
File Location: Z:\project\2517.01 MOA PME Denali Street\Civil\ACAD\2517\_Plan\_Denali\_Alt\_3.dwg

Plotted: 8/31/2018 9:29 AM



**BEFORE YOU DIG  
CALL FOR FREE  
UNDERGROUND  
LOCATION**

LOCATE CALL CENTER OF ALASKA  
STATEWIDE ..... 800-478-3121 WILL  
NOTIFY SUBSCRIBED UTILITIES ONLY.  
OTHER UTILITIES NEED TO BE  
CONTACTED INDIVIDUALLY.



**KEYMAP**

**DRAFT DSR  
AUGUST 2018**



FIELD BOOKS	BM NO.	LOCATION	ELEV.	DATA	DRAWN BY	CHECKED BY	DATA	DRAWN BY	CHECKED BY	REV	DATE	DESCRIPTION	BY	REV	DATE	DESCRIPTION	BY
DESIGN				BASE TOPOGRAPHY PROFILE SANITARY SEWER STORM SEWER WATER GAS			TELEPHONE ELECTRIC CABLE TV DESIGN QUANTITIES MUN. FINAL CHK.										
CONTRACTOR	BASIS OF THIS DATUM																
INSPECTOR	VERTICAL DATUM						PLAN CHECK										
CONSTRUCTION RECORD																	
										REVISIONS							

**R&M**  
R&M Consultants, Inc.  
9101 Vanguard Drive  
Anchorage, Alaska 99507  
907 522 1707 voice  
907 522 3404 fax  
www.rmconsult.com

SEAL



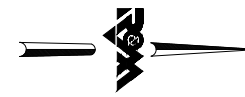
PROJECT MANAGEMENT AND  
ENGINEERING DEPARTMENT

16-28 MIDTOWN CORRIDOR IMPROVEMENTS:  
DENALI STREET AREA - BENSON  
BLVD TO TUDOR RD  
DENALI STREET - ALTERNATIVE 3

SCALE 1:20 DATE 8/31/18 GRID 1531 1630 1631  
ACCT. NO. 1730 1731 SHEET 42 of 72

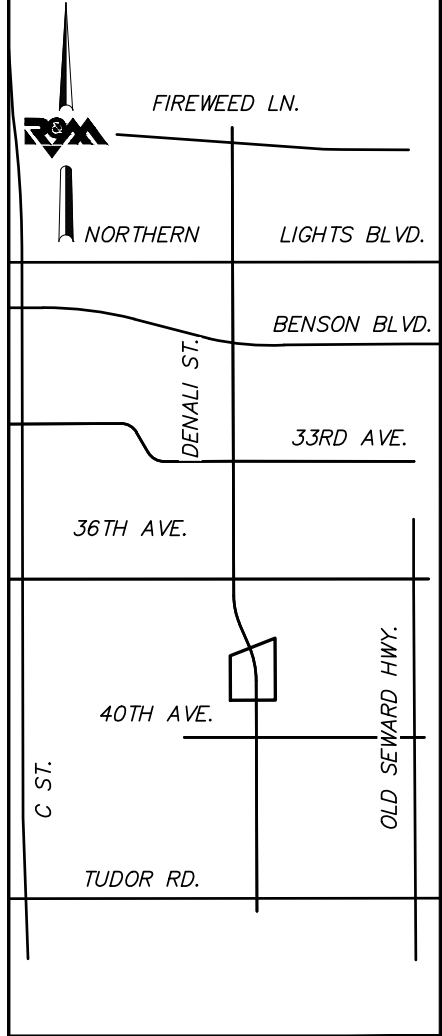
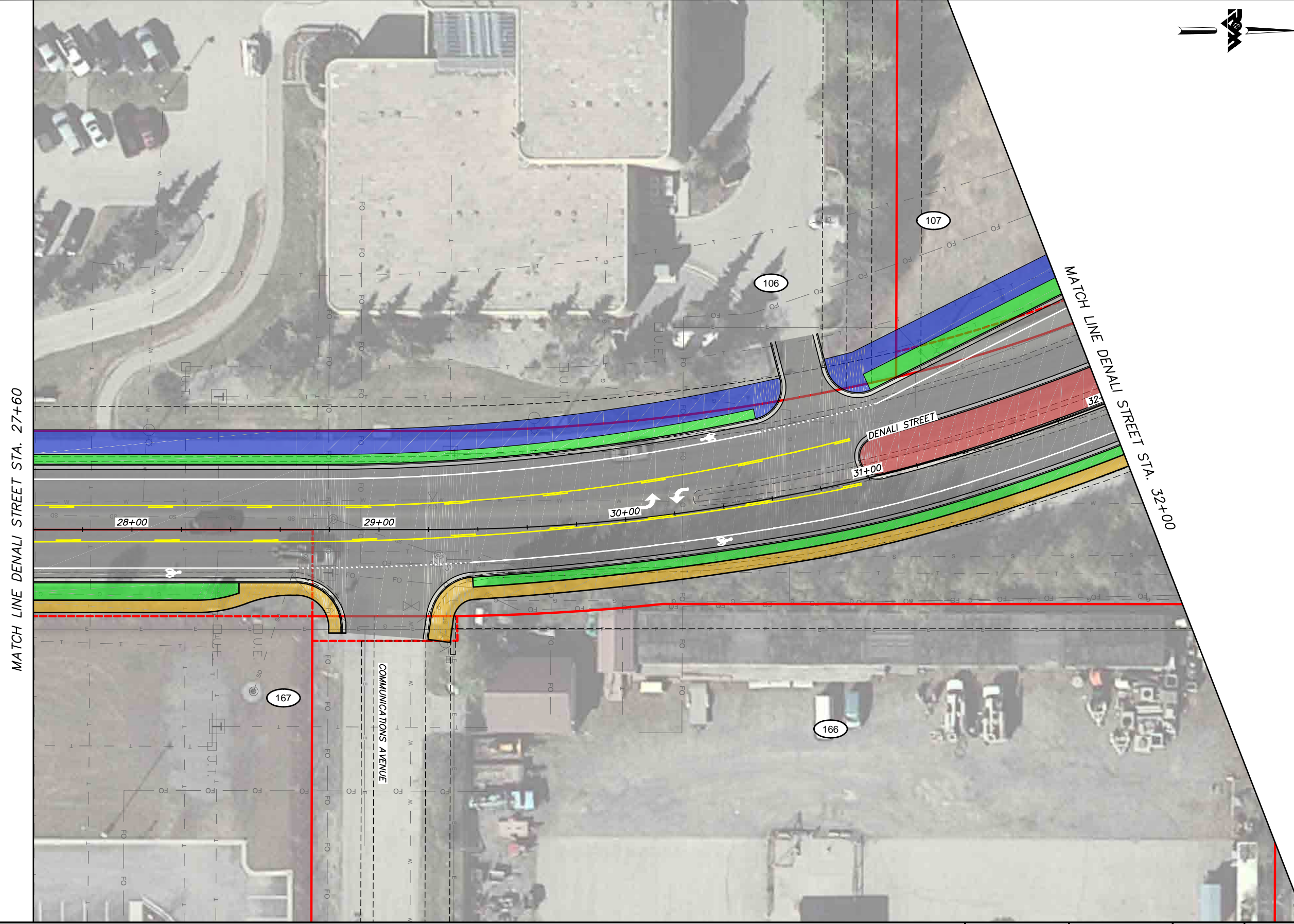
File Location: Z:\project\2517.01 MOA PME Denali Street\Civil\ACAD\2517\_Plan\_Denali\_Alt\_3.dwg

Plotted: 8/31/2018 9:29 AM



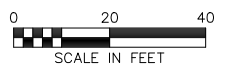
**BEFORE YOU DIG  
CALL FOR FREE  
UNDERGROUND  
LOCATION**

LOCATE CALL CENTER OF ALASKA  
STATEWIDE ..... 800-478-3121 WILL  
NOTIFY SUBSCRIBED UTILITIES ONLY.  
OTHER UTILITIES NEED TO BE  
CONTACTED INDIVIDUALLY.



**KEYMAP**

**DRAFT DSR  
AUGUST 2018**



FIELD BOOKS	BM NO.	LOCATION	ELEV.	DATA	DRAWN BY	CHECKED BY	DATA	DRAWN BY	CHECKED BY	REV	DATE	DESCRIPTION	BY	REV	DATE	DESCRIPTION	BY
				BASE			TELEPHONE										
				TOPOGRAPHY			ELECTRIC										
				PROFILE			CABLE TV										
				SANITARY SEWER			DESIGN										
				STORM SEWER			QUANTITIES										
				WATER			MUN. FINAL CHK.										
				GAS													
CONTRACTOR	BASIS OF THIS DATUM																
INSPECTOR																	
CONSTRUCTION RECORD		VERTICAL DATUM				PLAN CHECK									REVISIONS		

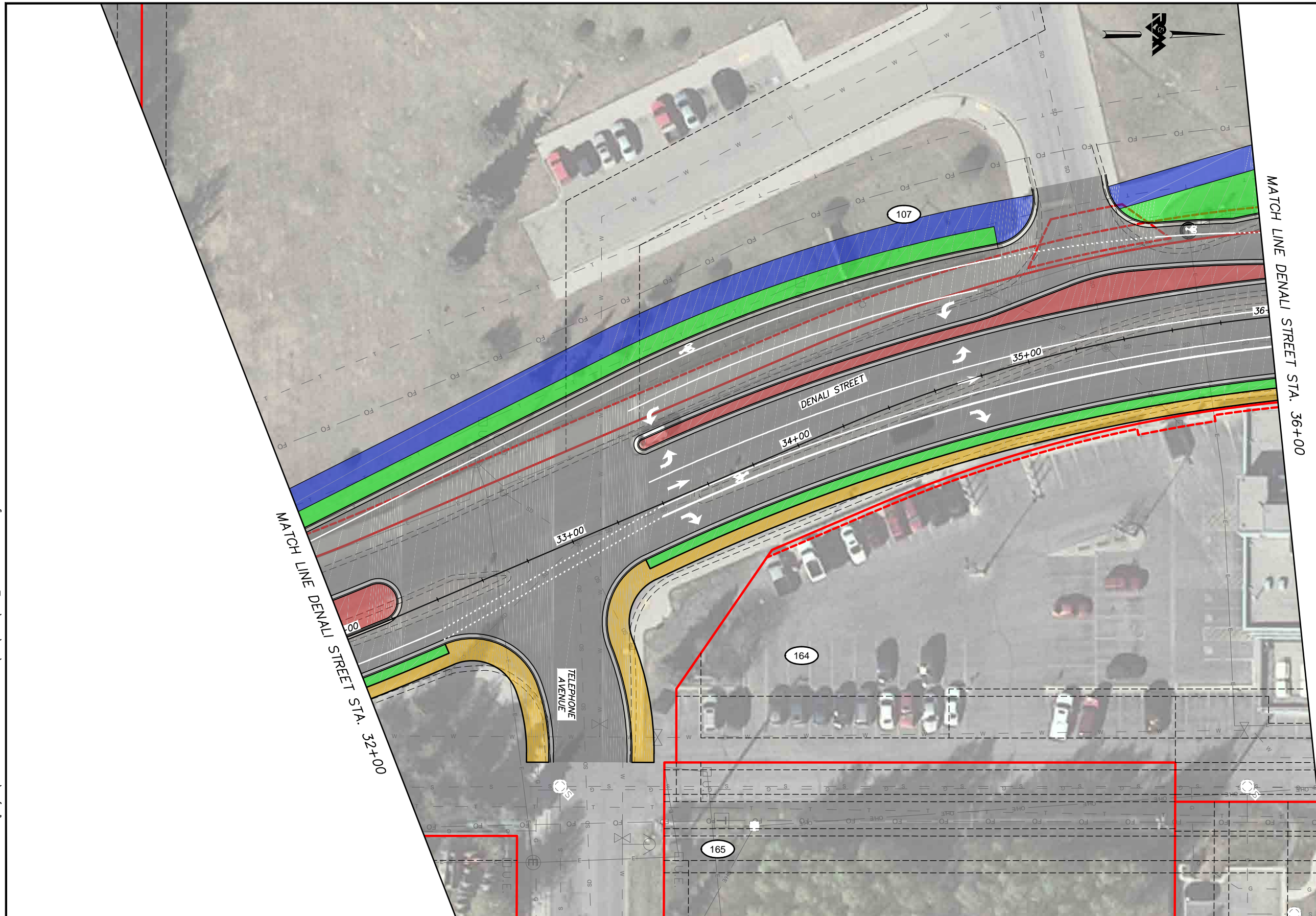
R&M Consultants, Inc.  
9101 Vanguard Drive  
Anchorage, Alaska 99507  
907 522 1707 voice  
907 522 3404 fax  
www.rmconsult.com



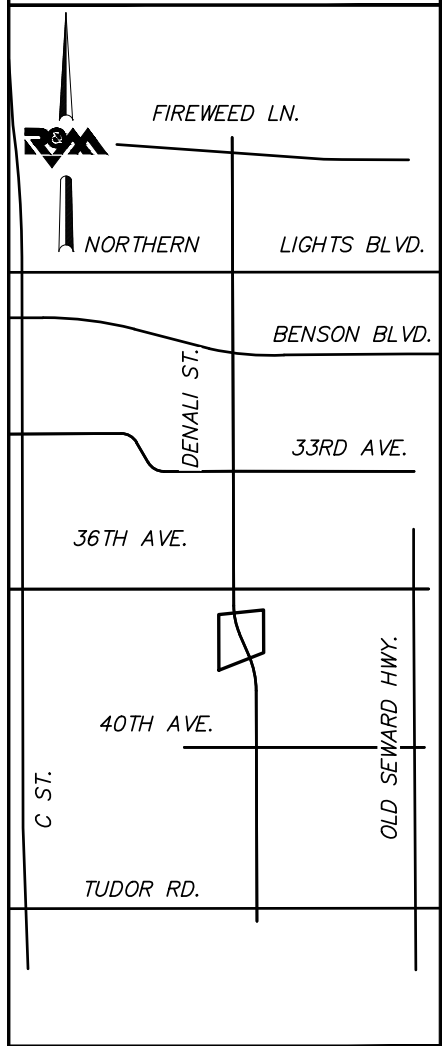
PROJECT MANAGEMENT AND ENGINEERING DEPARTMENT	
16-28	MIDTOWN CORRIDOR IMPROVEMENTS: DENALI STREET AREA - BENSON BLVD TO TUDOR RD  DENALI STREET - ALTERNATIVE 3
SCALE 1:20	DATE 8/31/18 GRID 1531 1630 1631 ACCT. NO. 1730 1731 SHEET 43 of 72

File Location: Z:\project\2517.01 MOA PME Denali Street\Civil\ACAD\2517\_Plan\_Denali\_Alt\_3.dwg

Plotted: 8/31/2018 9:29 AM

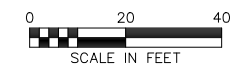


LOCATE CALL CENTER OF ALASKA STATEWIDE ..... 800-478-3121 WILL NOTIFY SUBSCRIBED UTILITIES ONLY. OTHER UTILITIES NEED TO BE CONTACTED INDIVIDUALLY.



KEYMAP

**DRAFT DSR  
AUGUST 2018**



FIELD BOOKS	BM NO.	LOCATION	ELEV.	DATA	DRAWN BY	CHECKED BY	DATA	DRAWN BY	CHECKED BY	REV	DATE	DESCRIPTION	BY	REV	DATE	DESCRIPTION	BY
				BASE			TELEPHONE										
				TOPOGRAPHY			ELECTRIC										
				PROFILE			CABLE TV										
				SANITARY SEWER			DESIGN										
				STORM SEWER			QUANTITIES										
				WATER			MUN. FINAL CHK.										
				GAS													
CONTRACTOR				BASIS OF THIS DATUM													
INSPECTOR				CONSTRUCTION RECORD				VERTICAL DATUM				PLAN CHECK					
												REVISIONS					

R&M Consultants, Inc.  
9101 Vanguard Drive  
Anchorage, Alaska 99507  
907 522 1707 voice  
907 522 3404 fax  
www.rmconsult.com

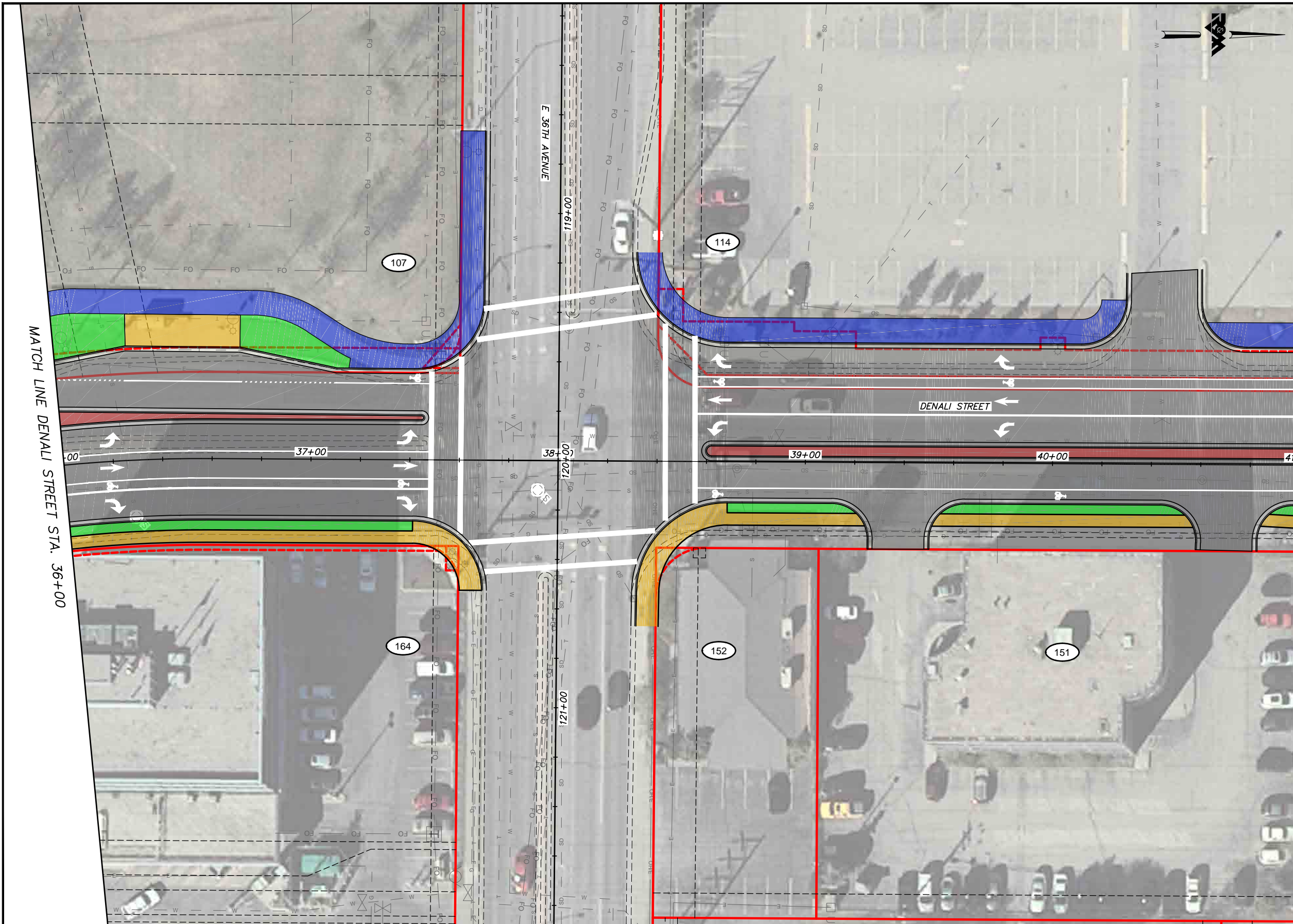
SEAL



PROJECT MANAGEMENT AND ENGINEERING DEPARTMENT	
16-28	MIDTOWN CORRIDOR IMPROVEMENTS: DENALI STREET AREA - BENSON BLVD TO TUDOR RD DENALI STREET - ALTERNATIVE 3
SCALE 1:20	DATE 8/31/18 GRID 1531 1630 1631 1730 1731 SHEET 44 of 72
	ACCT. NO.

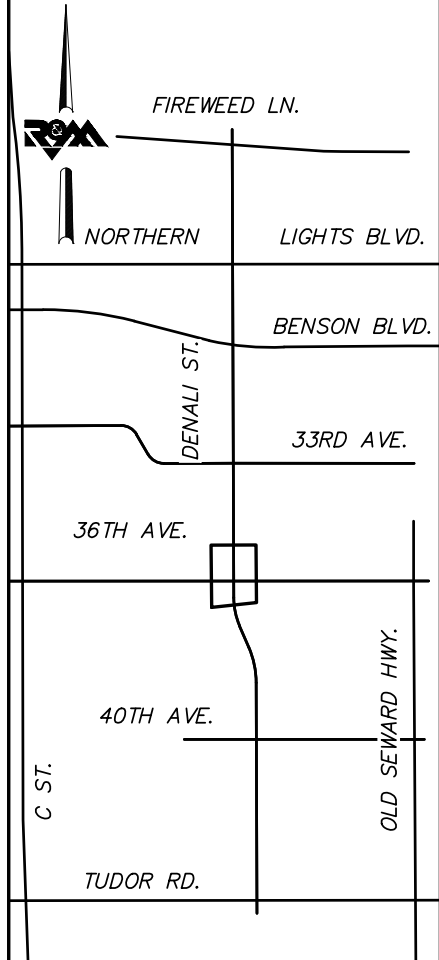
File Location: Z:\project\2517.01 MOA PME Denali Street\Civil\ACAD\2517\_Plan\_Denali\_Alt\_3.dwg

Plotted: 8/31/2018 9:29 AM



**BEFORE YOU DIG  
CALL FOR FREE  
UNDERGROUND  
LOCATION**

LOCATE CALL CENTER OF ALASKA  
STATEWIDE ..... 800-478-3121 WILL  
NOTIFY SUBSCRIBED UTILITIES ONLY.  
OTHER UTILITIES NEED TO BE  
CONTACTED INDIVIDUALLY.



**KEYMAP**

**DRAFT DSR  
AUGUST 2018**



FIELD BOOKS	BM NO.	LOCATION	ELEV.	DATA	DRAWN BY	CHECKED BY	DATA	DRAWN BY	CHECKED BY	REV	DATE	DESCRIPTION	BY	REV	DATE	DESCRIPTION	BY
				BASE			TELEPHONE										
				TOPOGRAPHY			ELECTRIC										
				PROFILE			CABLE TV										
				SANITARY SEWER			DESIGN										
				STORM SEWER			QUANTITIES										
				WATER			MUN. FINAL CHK.										
				GAS													
CONTRACTOR	BASIS OF THIS DATUM																
INSPECTOR																	
CONSTRUCTION RECORD	VERTICAL DATUM			PLAN CHECK				REVISIONS				CONSULTANT					



R&M Consultants, Inc.  
9101 Vanguard Drive  
Anchorage, Alaska 99507  
907 522 1707 voice  
907 522 3404 fax  
www.rmconsult.com



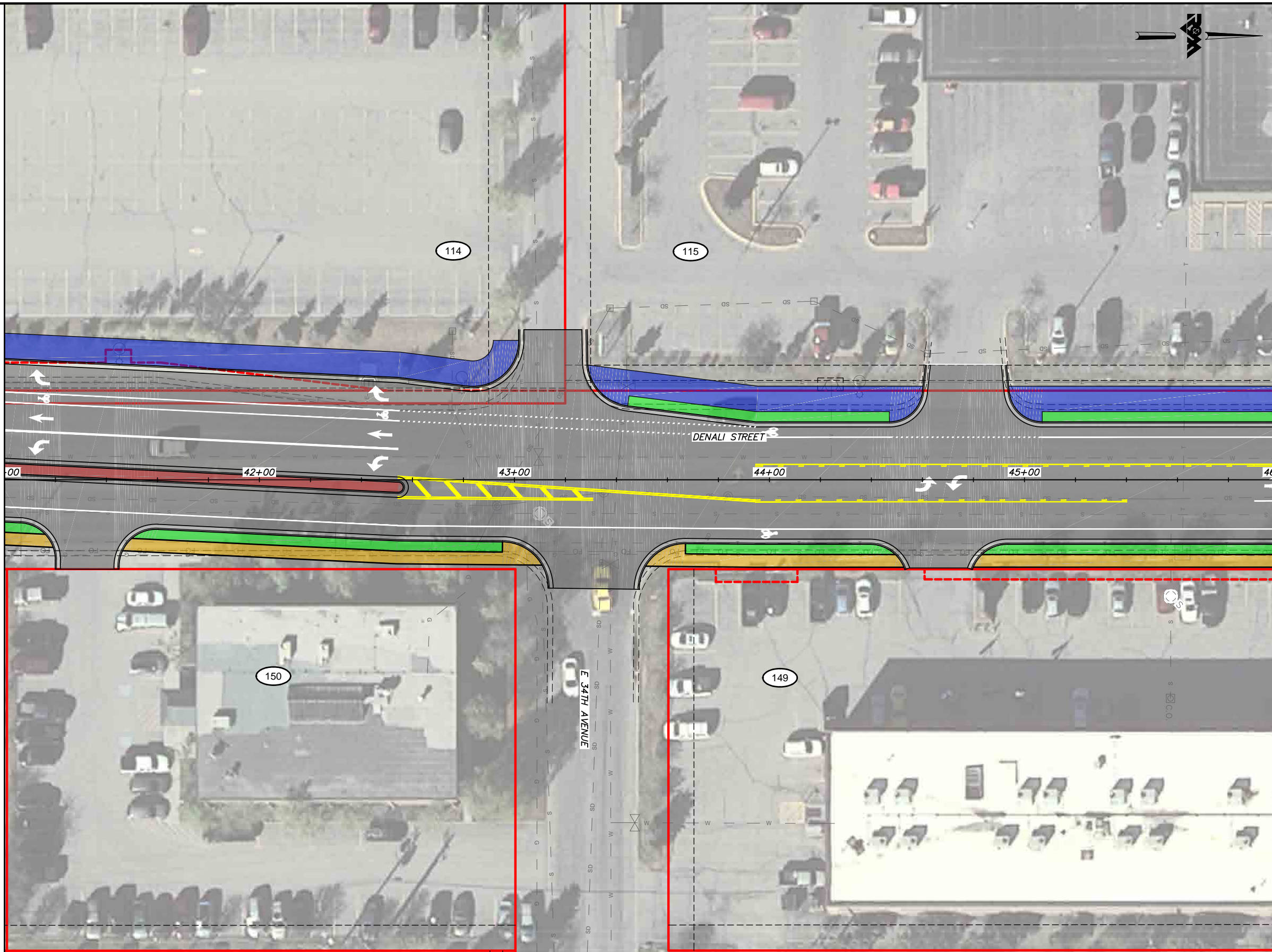
PROJECT MANAGEMENT AND ENGINEERING DEPARTMENT	
16-28	MIDTOWN CORRIDOR IMPROVEMENTS: DENALI STREET AREA - BENSON BLVD TO TUDOR RD  DENALI STREET - ALTERNATIVE 3
SCALE 1:20	DATE 8/31/18 GRID 1531 1630 1631 1730 1731 SHEET 45 of 72

File Location: Z:\project\2517.01 MOA PME Denali Street\Civil\ACAD\2517\_Plan Denali Alt 3.dwg

Plotted: 8/31/2018 9:29 AM

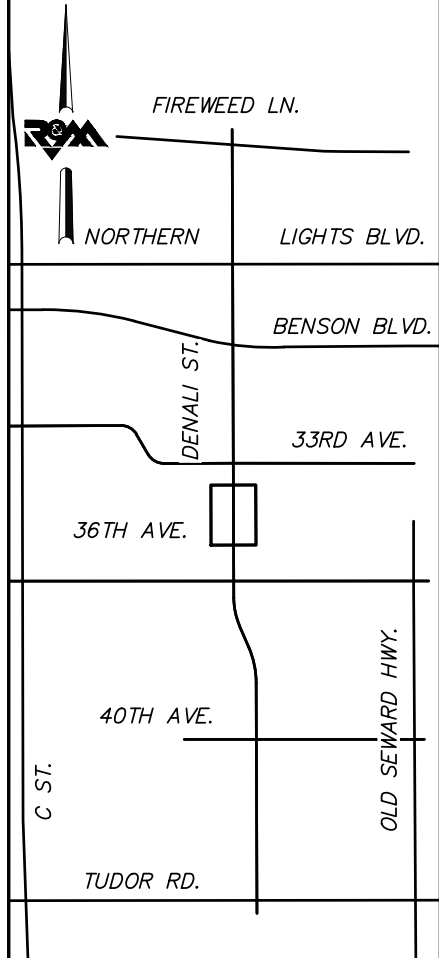
MATCH LINE DENALI STREET STA. 41+00

MATCH LINE DENALI STREET STA. 46+00



**BEFORE YOU DIG  
CALL FOR FREE  
UNDERGROUND  
LOCATION**

LOCATE CALL CENTER OF ALASKA  
STATEWIDE ..... 800-478-3121 WILL  
NOTIFY SUBSCRIBED UTILITIES ONLY.  
OTHER UTILITIES NEED TO BE  
CONTACTED INDIVIDUALLY.



**KEYMAP**

**DRAFT DSR  
AUGUST 2018**



FIELD BOOKS	BM NO.	LOCATION	ELEV.	DATA	DRAWN BY	CHECKED BY	DATA	DRAWN BY	CHECKED BY	REV	DATE	DESCRIPTION	BY	REV	DATE	DESCRIPTION	BY
				BASE			TELEPHONE										
				TOPOGRAPHY			ELECTRIC										
				PROFILE			CABLE TV										
				SANITARY SEWER			DESIGN										
				STORM SEWER			QUANTITIES										
				WATER			MUN. FINAL CHK.										
				GAS													
CONTRACTOR	BASIS OF THIS DATUM																
INSPECTOR																	
CONSTRUCTION RECORD	VERTICAL DATUM			PLAN CHECK				REVISIONS				CONSULTANT					



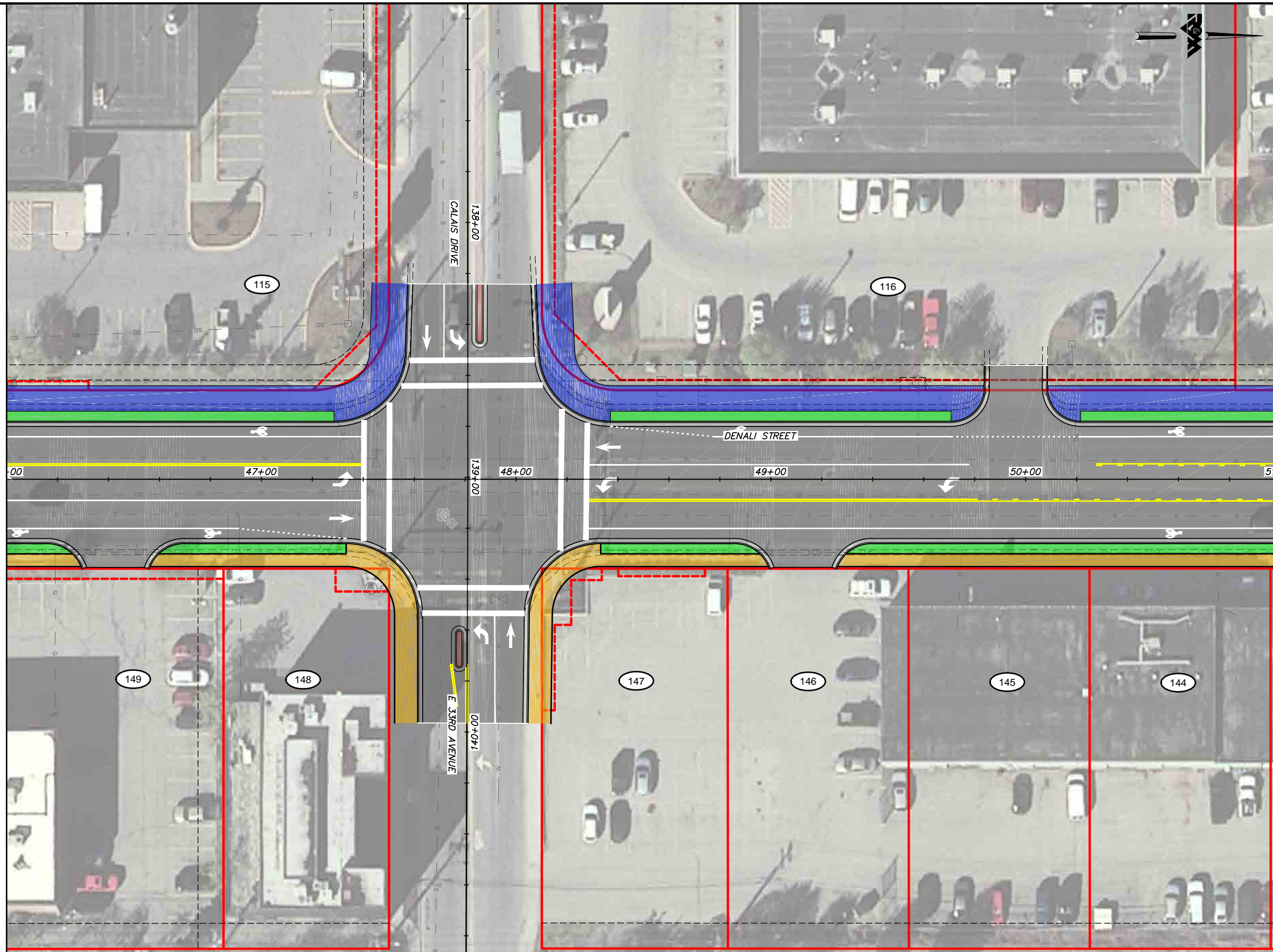
R&M Consultants, Inc.  
9101 Vanguard Drive  
Anchorage, Alaska 99507  
907 522 1707 voice  
907 522 3404 fax  
www.rmconsult.com



PROJECT MANAGEMENT AND ENGINEERING DEPARTMENT	
16-28	MIDTOWN CORRIDOR IMPROVEMENTS: DENALI STREET AREA - BENSON BLVD TO TUDOR RD  DENALI STREET - ALTERNATIVE 3
SCALE 1:20	DATE 8/31/18 GRID 1531 1630 1631 1730 1731 SHEET 46 of 72



MATCH LINE DENALI STREET STA. 46+00

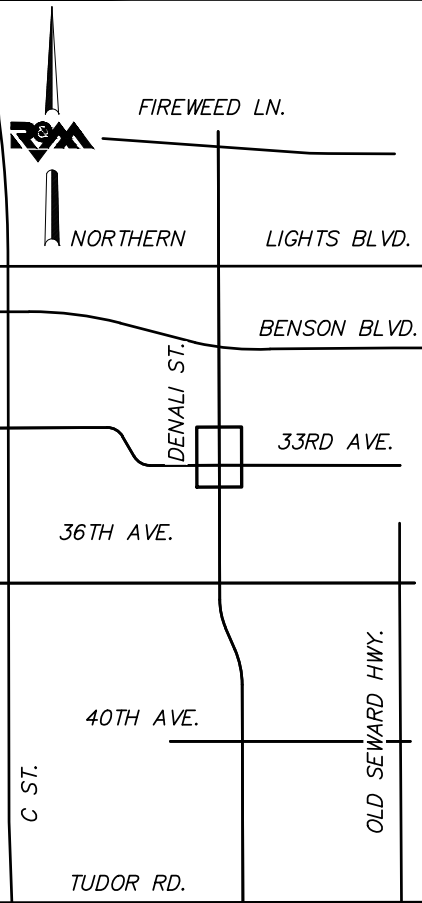


MATCH LINE DENALI STREET STA. 51+00



BEFORE YOU DIG  
CALL FOR FREE  
UNDERGROUND  
LOCATION

LOCATE CALL CENTER OF ALASKA  
STATEWIDE ..... 800-478-3121 WILL  
NOTIFY SUBSCRIBED UTILITIES ONLY.  
OTHER UTILITIES NEED TO BE  
CONTACTED INDIVIDUALLY.



KEYMAP

**DRAFT DSR  
AUGUST 2018**



FIELD BOOKS	BM NO.	LOCATION	ELEV.	DATA	DRAWN BY	CHECKED BY	DATA	DRAWN BY	CHECKED BY	REV	DATE	DESCRIPTION	BY	REV	DATE	DESCRIPTION	BY
				BASE			TELEPHONE										
				TOPOGRAPHY			ELECTRIC										
				PROFILE			CABLE TV										
				SANITARY SEWER			DESIGN										
				STORM SEWER			QUANTITIES										
				WATER			MUN. FINAL CHK.										
				GAS													
CONTRACTOR				BASIS OF THIS DATUM													
INSPECTOR				CONSTRUCTION RECORD				VERTICAL DATUM				PLAN CHECK					
												REVISIONS					



R&M Consultants, Inc.  
9101 Vanguard Drive  
Anchorage, Alaska 99507  
907 522 1707 voice  
907 522 3404 fax  
www.rmconsult.com

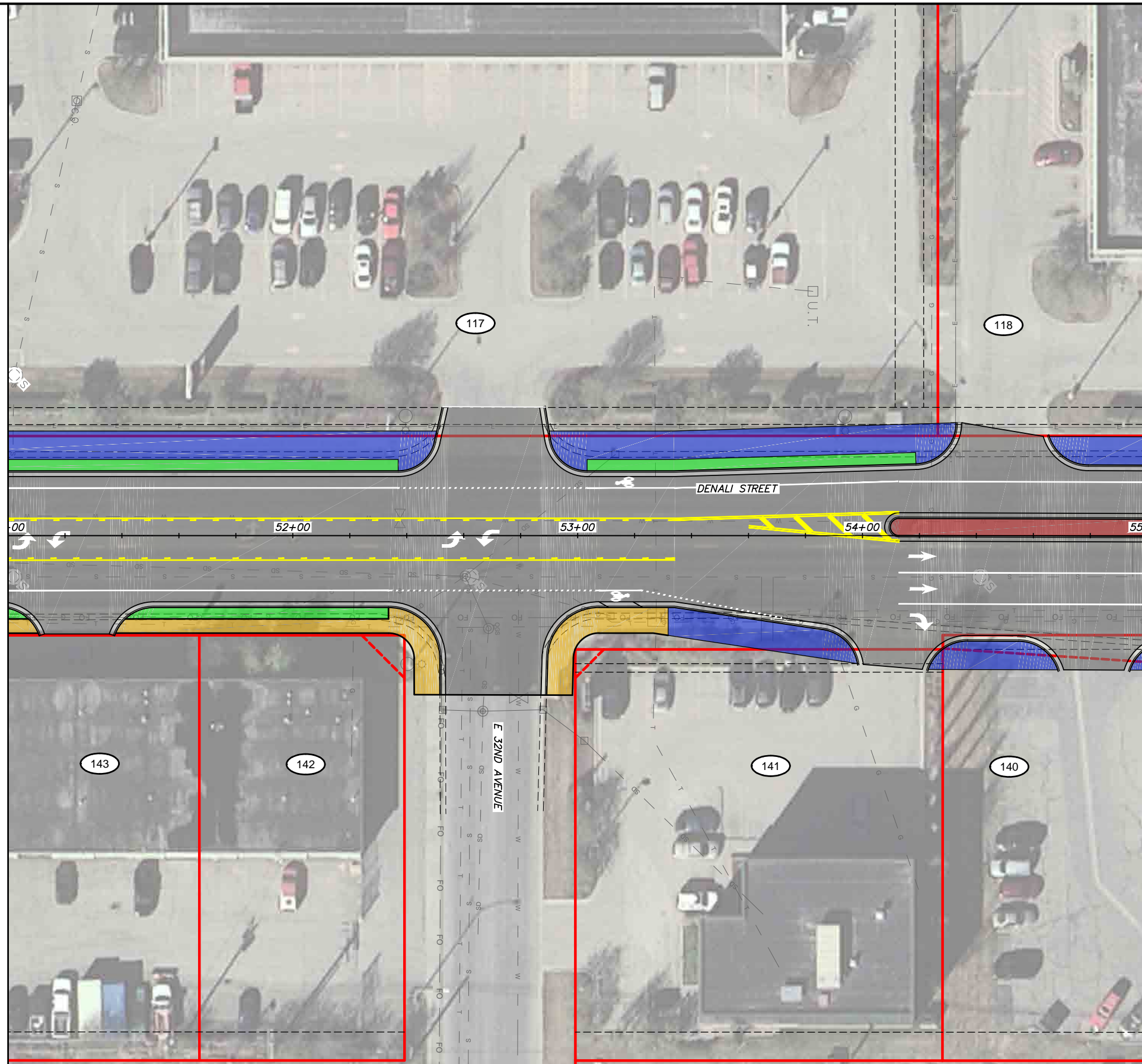


PROJECT MANAGEMENT AND ENGINEERING DEPARTMENT	
16-28	MIDTOWN CORRIDOR IMPROVEMENTS: DENALI STREET AREA - BENSON BLVD TO TUDOR RD  DENALI STREET - ALTERNATIVE 3
SCALE 1:20	DATE 8/31/18 GRID 1531 1630 1631 1730 1733 SHEET 47 of 72

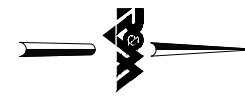
CONSULTANT

SEAL

MATCH LINE DENALI STREET STA. 51+00

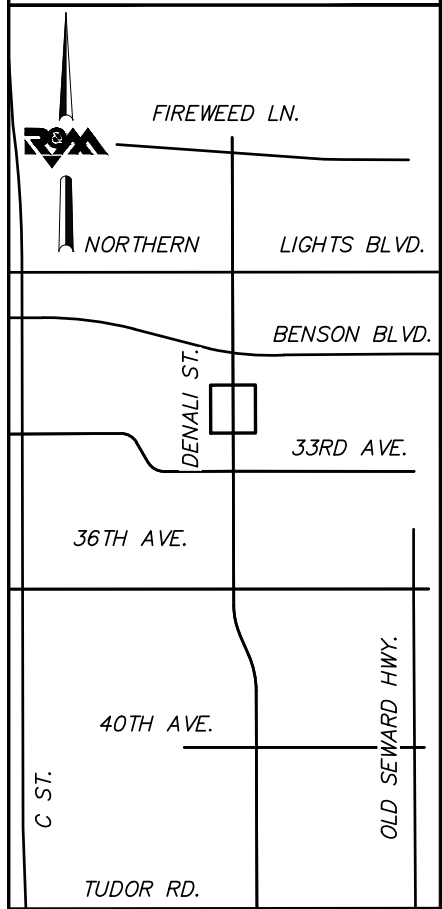


MATCH LINE DENALI STREET STA. 55+00



BEFORE YOU DIG  
CALL FOR FREE  
UNDERGROUND  
LOCATION

LOCATE CALL CENTER OF ALASKA  
STATEWIDE ..... 800-478-3121 WILL  
NOTIFY SUBSCRIBED UTILITIES ONLY.  
OTHER UTILITIES NEED TO BE  
CONTACTED INDIVIDUALLY.



KEYMAP

**DRAFT DSR  
AUGUST 2018**



FIELD BOOKS	BM NO.	LOCATION	ELEV.	DATA	DRAWN BY	CHECKED BY	DATA	DRAWN BY	CHECKED BY	REV	DATE	DESCRIPTION	BY	REV	DATE	DESCRIPTION	BY
				BASE			TELEPHONE										
				TOPOGRAPHY			ELECTRIC										
				PROFILE			CABLE TV										
				SANITARY SEWER			DESIGN										
				STORM SEWER			QUANTITIES										
				WATER			MUN. FINAL CHK.										
				GAS													
CONTRACTOR				BASIS OF THIS DATUM													
INSPECTOR																	
CONSTRUCTION RECORD				VERTICAL DATUM				PLAN CHECK				REVISIONS					



R&M Consultants, Inc.  
9101 Vanguard Drive  
Anchorage, Alaska 99507  
907 522 1707 voice  
907 522 3404 fax  
www.rmconsult.com



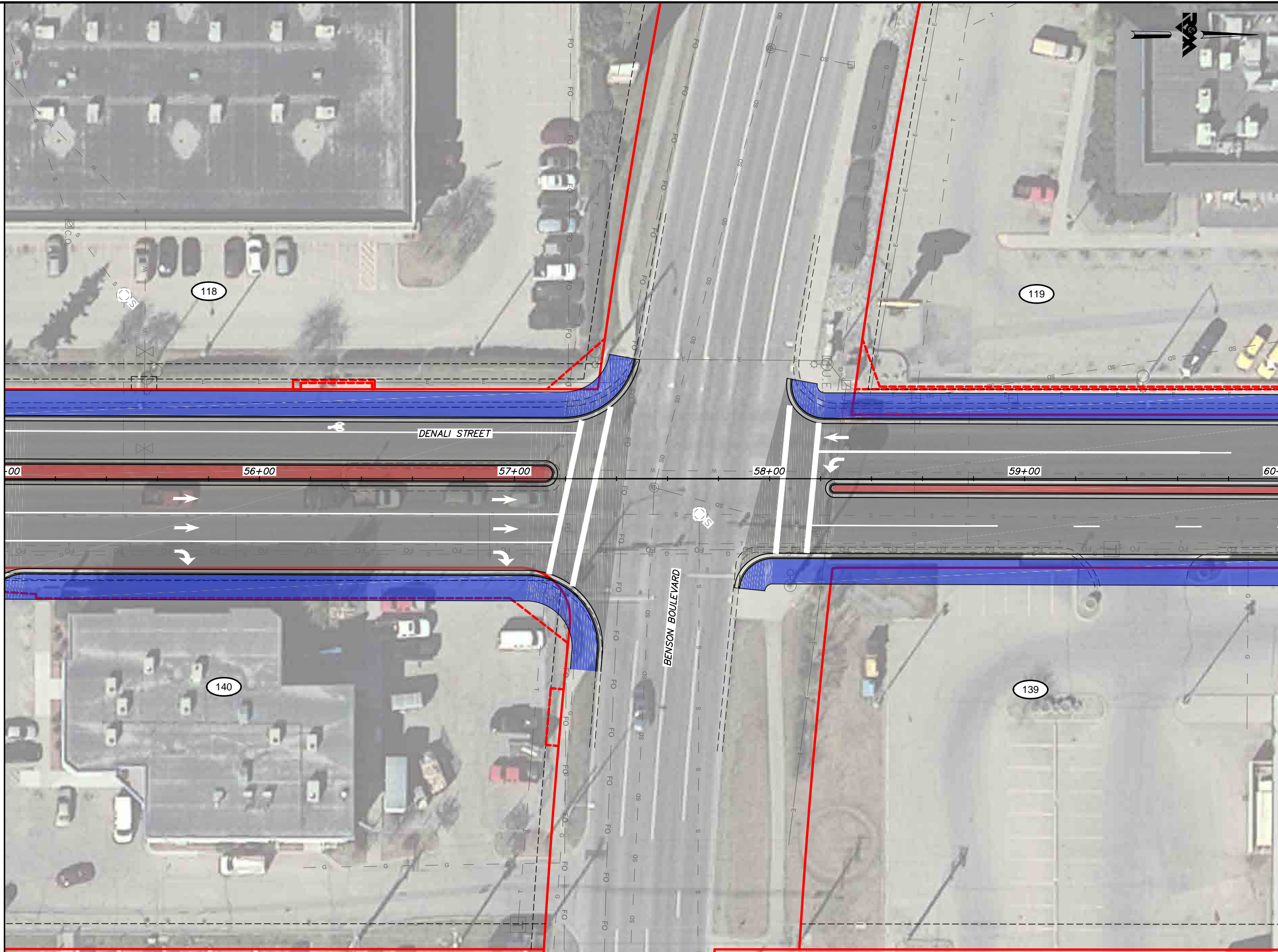
PROJECT MANAGEMENT AND ENGINEERING DEPARTMENT	
16-28	MIDTOWN CORRIDOR IMPROVEMENTS: DENALI STREET AREA - BENSON BLVD TO TUDOR RD  DENALI STREET - ALTERNATIVE 3
SCALE 1:20	DATE 8/31/18 GRID 1531 1630 1631 1730 1731 SHEET 48 of 72

File Location: Z:\project\2517.01 MOA PME Denali Street\Civil\ACAD\2517\_Plan Denali Alt 3.dwg

Plotted: 8/31/2018 9:30 AM

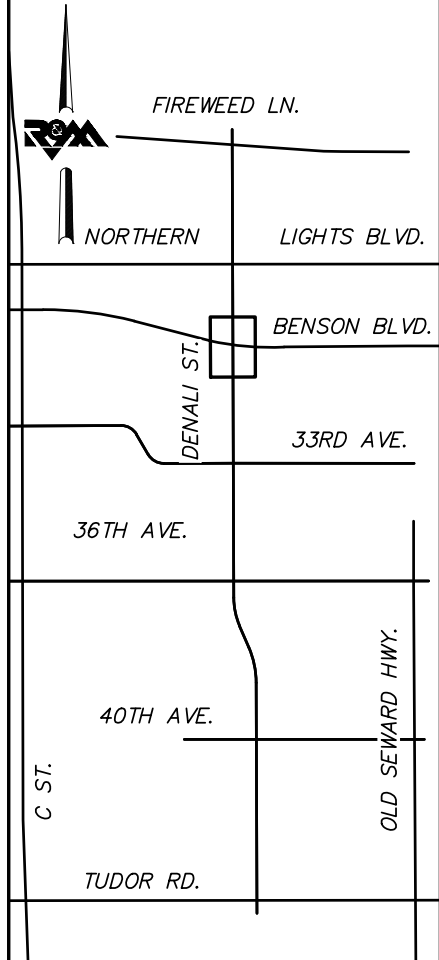
MATCH LINE DENALI STREET STA. 55+00

MATCH LINE DENALI STREET STA. 60+00



**BEFORE YOU DIG  
CALL FOR FREE  
UNDERGROUND  
LOCATION**

LOCATE CALL CENTER OF ALASKA  
STATEWIDE ..... 800-478-3121 WILL  
NOTIFY SUBSCRIBED UTILITIES ONLY.  
OTHER UTILITIES NEED TO BE  
CONTACTED INDIVIDUALLY.



**KEYMAP**

**DRAFT DSR  
AUGUST 2018**



FIELD BOOKS	BM NO.	LOCATION	ELEV.	DATA	DRAWN BY	CHECKED BY	DATA	DRAWN BY	CHECKED BY	REV	DATE	DESCRIPTION	BY	REV	DATE	DESCRIPTION	BY	
DESIGN				BASE TOPOGRAPHY PROFILE SANITARY SEWER STORM SEWER WATER GAS			TELEPHONE ELECTRIC CABLE TV DESIGN QUANTITIES MUN. FINAL CHK.											
CONTRACTOR	BASIS OF THIS DATUM																	
INSPECTOR	CONSTRUCTION RECORD			VERTICAL DATUM	PLAN CHECK				REVISIONS				CONSULTANT	SEAL				

R&M Consultants, Inc.  
9101 Vanguard Drive  
Anchorage, Alaska 99507  
907 522 1707 voice  
907 522 3404 fax  
www.rmconsult.com



PROJECT MANAGEMENT AND  
ENGINEERING DEPARTMENT

16-28 MIDTOWN CORRIDOR IMPROVEMENTS:  
DENALI STREET AREA - BENSON  
BLVD TO TUDOR RD

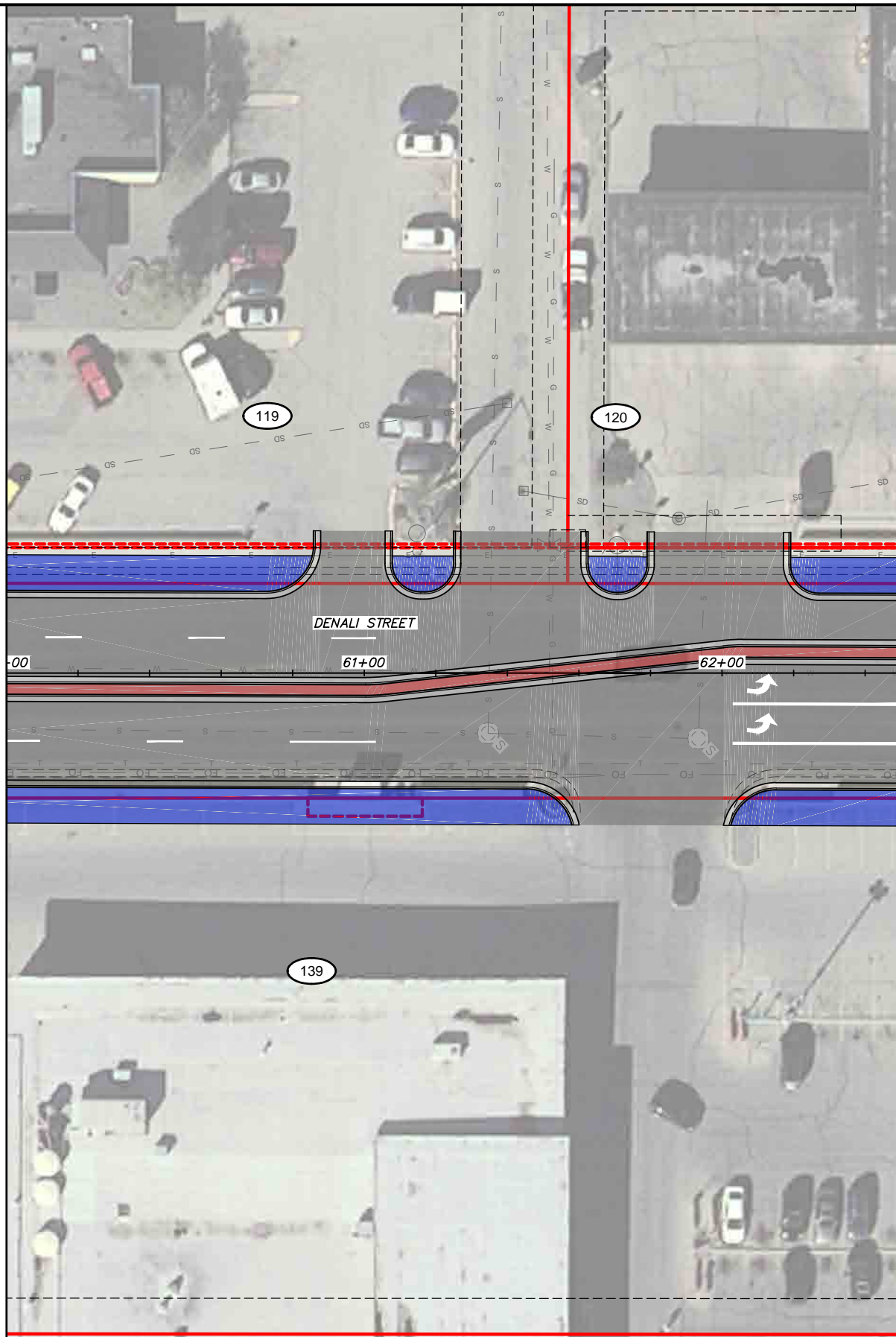
DENALI STREET - ALTERNATIVE 3

SCALE 1:20 DATE 8/31/18 GRID 1531 1630 1631  
ACCT. NO. 1730 1731 SHEET 49 of 72

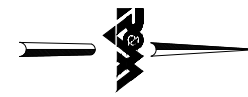
File Location: Z:\project\2517.01 MOA PME Denali Street\Civil\ACAD\2517\_Plan Denali Alt 3.dwg

Plotted: 8/31/2018 9:30 AM

MATCH LINE DENALI STREET STA. 60+00

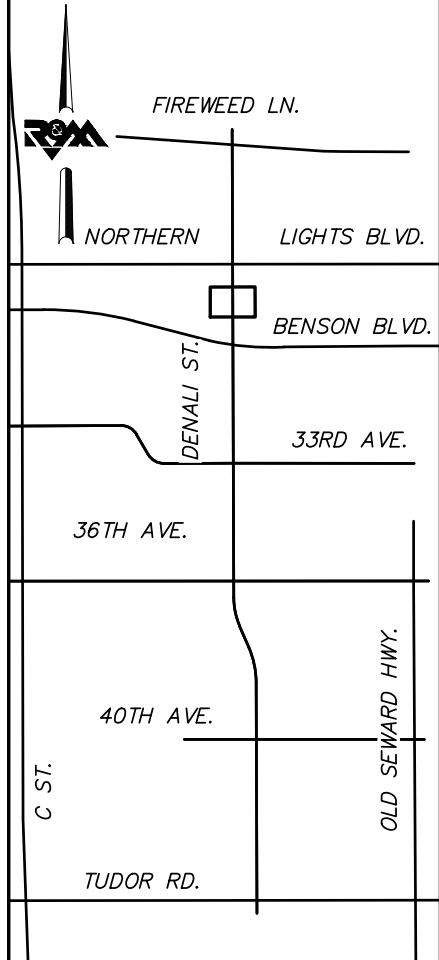


MATCH LINE DENALI STREET STA. 62+50



**BEFORE YOU DIG  
CALL FOR FREE  
UNDERGROUND  
LOCATION**

LOCATE CALL CENTER OF ALASKA  
STATEWIDE ..... 800-478-3121 WILL  
NOTIFY SUBSCRIBED UTILITIES ONLY.  
OTHER UTILITIES NEED TO BE  
CONTACTED INDIVIDUALLY.



**KEYMAP**

**DRAFT DSR  
AUGUST 2018**



FIELD BOOKS	BM NO.	LOCATION	ELEV.	DATA	DRAWN BY	CHECKED BY	DATA	DRAWN BY	CHECKED BY	REV	DATE	DESCRIPTION	BY	REV	DATE	DESCRIPTION	BY	
DESIGN				BASE			TELEPHONE											
				TOPOGRAPHY			ELECTRIC											
				PROFILE			CABLE TV											
				SANITARY SEWER			DESIGN											
				STORM SEWER			QUANTITIES											
CONTRACTOR	BASIS OF THIS DATUM			WATER			MUN. FINAL CHK.											
INSPECTOR				GAS														
CONSTRUCTION RECORD		VERTICAL DATUM		PLAN CHECK			REVISIONS											



R&M Consultants, Inc.  
9101 Vanguard Drive  
Anchorage, Alaska 99507  
907 522 1707 voice  
907 522 3404 fax  
www.rmconsult.com

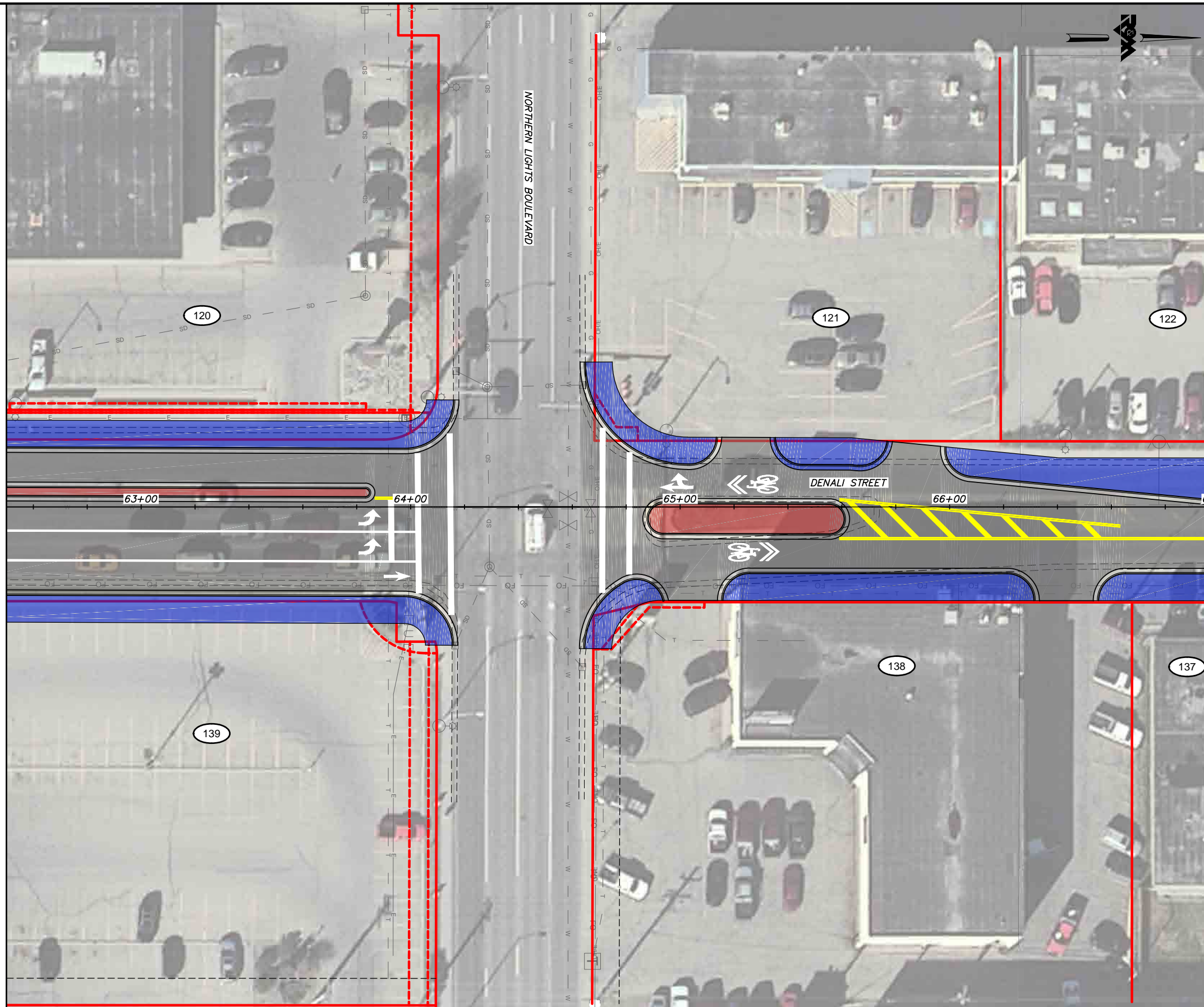


PROJECT MANAGEMENT AND ENGINEERING DEPARTMENT	
16-28	MIDTOWN CORRIDOR IMPROVEMENTS: DENALI STREET AREA - BENSON BLVD TO TUDOR RD  DENALI STREET - ALTERNATIVE 3
SCALE 1:20	DATE 8/31/18 GRID 1531 1630 1631 ACCT. NO. 1730 1731 SHEET 50 of 72

File Location: Z:\project\2517.01 MOA PME Denali Street\Civil\ACAD\2517\_Plan Denali Alt 3.dwg

Plotted: 8/31/2018 9:30 AM

MATCH LINE DENALI STREET STA. 62+50

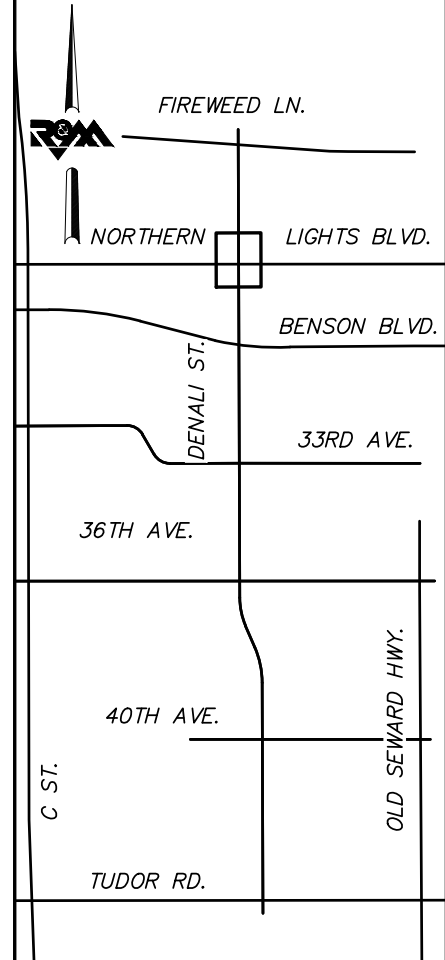


MATCH LINE DENALI STREET STA. 67+00



BEFORE YOU DIG  
CALL FOR FREE  
UNDERGROUND  
LOCATION

LOCATE CALL CENTER OF ALASKA  
STATEWIDE ..... 800-478-3121 WILL  
NOTIFY SUBSCRIBED UTILITIES ONLY.  
OTHER UTILITIES NEED TO BE  
CONTACTED INDIVIDUALLY.



KEYMAP

**DRAFT DSR  
AUGUST 2018**



FIELD BOOKS	BM NO.	LOCATION	ELEV.	DATA	DRAWN BY	CHECKED BY	DATA	DRAWN BY	CHECKED BY	REV	DATE	DESCRIPTION	BY	REV	DATE	DESCRIPTION	BY
DESIGN				BASE TOPOGRAPHY PROFILE SANITARY SEWER STORM SEWER WATER GAS			TELEPHONE ELECTRIC CABLE TV DESIGN QUANTITIES MUN. FINAL CHK.										
CONTRACTOR	BASIS OF THIS DATUM																
INSPECTOR	VERTICAL DATUM			PLAN CHECK				REVISIONS				CONSULTANT		SEAL			

R&M Consultants, Inc.  
9101 Vanguard Drive  
Anchorage, Alaska 99507  
907 522 1707 voice  
907 522 3404 fax  
www.rmconsult.com

SEAL

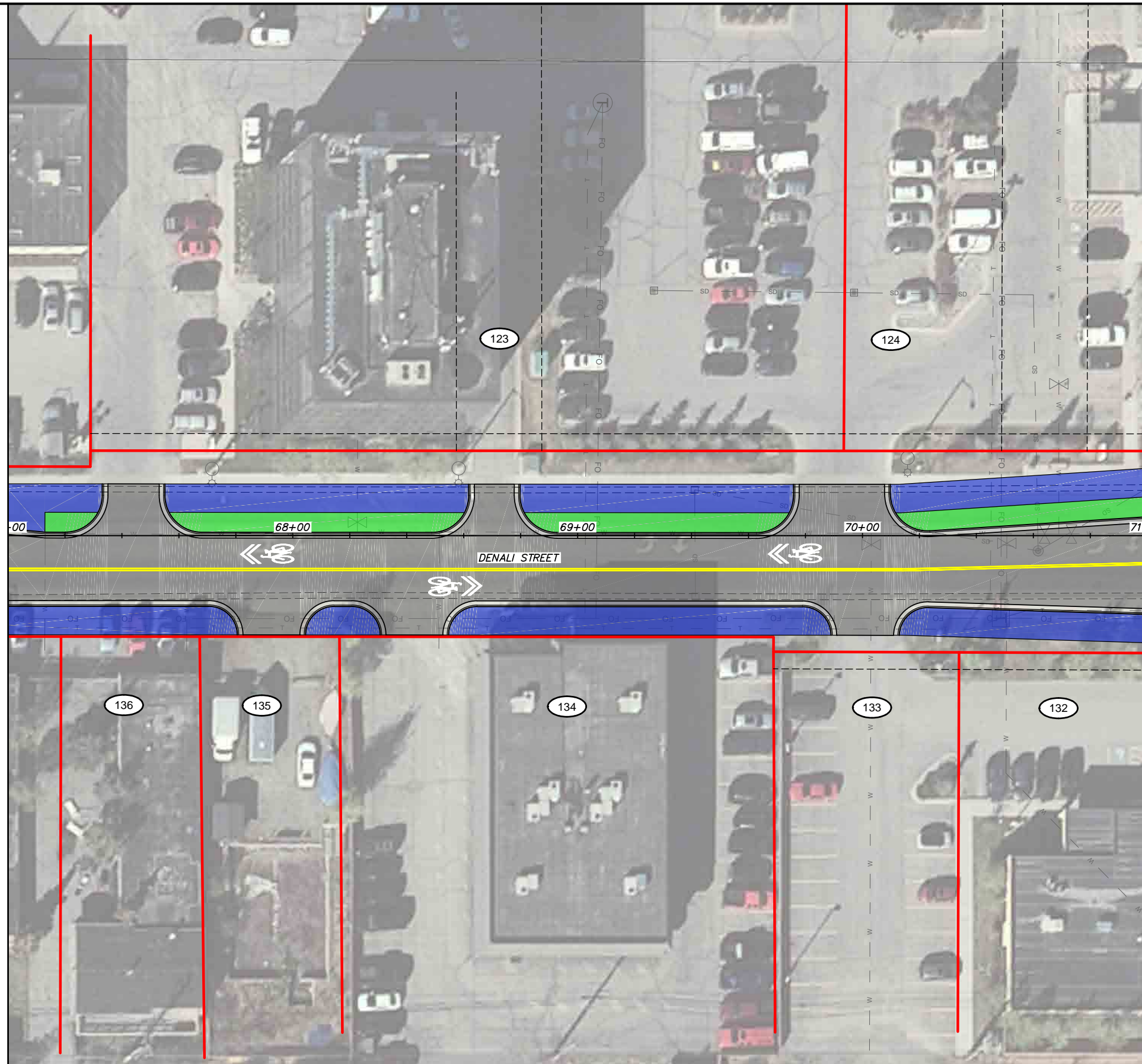


PROJECT MANAGEMENT AND ENGINEERING DEPARTMENT	
16-28	MIDTOWN CORRIDOR IMPROVEMENTS: DENALI STREET AREA - BENSON BLVD TO TUDOR RD  DENALI STREET - ALTERNATIVE 3
SCALE 1:20	DATE 8/31/18 GRID 1531 1630 1631 1730 1731 SHEET 51 of 72

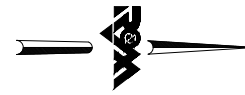
File Location: Z:\project\2517.01 MOA PME Denali Street\Civil\ACAD\2517\_Plan Denali Alt 3.dwg

Plotted: 8/31/2018 9:30 AM

MATCH LINE DENALI STREET STA. 67+00

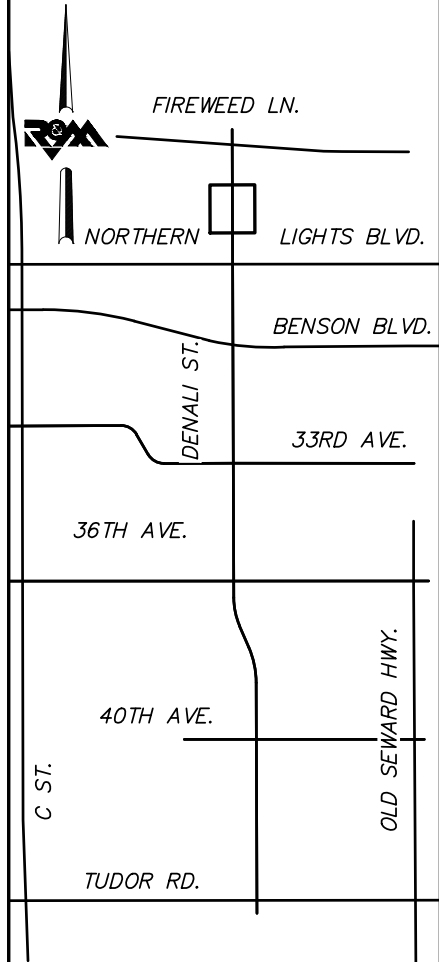


MATCH LINE DENALI STREET STA. 71+00



BEFORE YOU DIG  
CALL FOR FREE  
UNDERGROUND  
LOCATION

LOCATE CALL CENTER OF ALASKA  
STATEWIDE ..... 800-478-3121 WILL  
NOTIFY SUBSCRIBED UTILITIES ONLY.  
OTHER UTILITIES NEED TO BE  
CONTACTED INDIVIDUALLY.



KEYMAP

DRAFT DSR  
AUGUST 2018



FIELD BOOKS	BM NO.	LOCATION	ELEV.	DATA	DRAWN BY	CHECKED BY	DATA	DRAWN BY	CHECKED BY	REV	DATE	DESCRIPTION	BY	REV	DATE	DESCRIPTION	BY
				BASE			TELEPHONE										
				TOPOGRAPHY			ELECTRIC										
				PROFILE			CABLE TV										
				SANITARY SEWER			DESIGN										
				STORM SEWER			QUANTITIES										
				WATER			MUN. FINAL CHK.										
				GAS													
CONTRACTOR	BASIS OF THIS DATUM																
INSPECTOR				PLAN CHECK				REVISIONS				CONSULTANT					
CONSTRUCTION RECORD	VERTICAL DATUM																



R&M Consultants, Inc.  
9101 Vanguard Drive  
Anchorage, Alaska 99507  
907 522 1707 voice  
907 522 3404 fax  
www.rmconsult.com

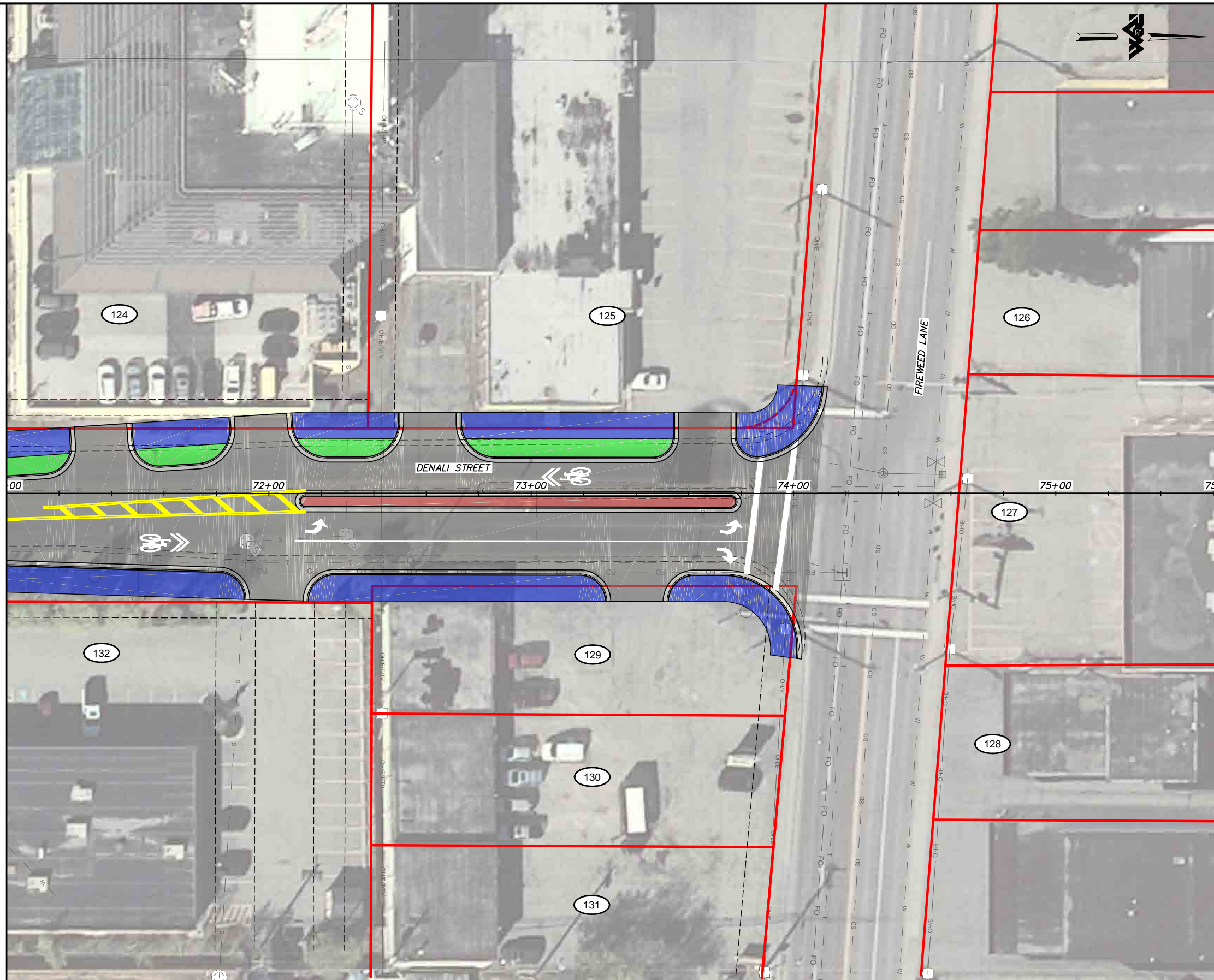


PROJECT MANAGEMENT AND ENGINEERING DEPARTMENT	
16-28	MIDTOWN CORRIDOR IMPROVEMENTS: DENALI STREET AREA - BENSON BLVD TO TUDOR RD  DENALI STREET - ALTERNATIVE 3
SCALE 1:20	DATE 8/31/18 GRID 1531 1630 1631 1730 1731 SHEET 52 of 72

File Location: Z:\project\2517.01 MOA PME Denali Street\Civil\ACAD\2517\_Plan\_Denali\_Alt\_3.dwg

Plotted: 8/31/2018 9:30 AM

MATCH LINE DENALI STREET STA. 71+00



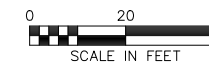
BEFORE YOU DIG  
CALL FOR FREE  
UNDERGROUND  
LOCATION

LOCATE CALL CENTER OF ALASKA  
STATEWIDE ..... 800-478-3121 WILL  
NOTIFY SUBSCRIBED UTILITIES ONLY.  
OTHER UTILITIES NEED TO BE  
CONTACTED INDIVIDUALLY.



KEYMAP

DRAFT DSR  
AUGUST 2018



FIELD BOOKS	BM NO.	LOCATION	ELEV.	DATA	DRAWN BY	CHECKED BY	DATA	DRAWN BY	CHECKED BY	REV	DATE	DESCRIPTION	BY	REV	DATE	DESCRIPTION	BY
DESIGN				BASE TOPOGRAPHY PROFILE SANITARY SEWER STORM SEWER WATER GAS			TELEPHONE ELECTRIC CABLE TV DESIGN QUANTITIES MUN. FINAL CHK.										
CONTRACTOR	BASIS OF THIS DATUM																
INSPECTOR																	
CONSTRUCTION RECORD		VERTICAL DATUM					PLAN CHECK										
																	REVISIONS

R&M Consultants, Inc.  
9101 Vanguard Drive  
Anchorage, Alaska 99507  
907 522 1707 voice  
907 522 3404 fax  
www.rmconsult.com

SEAL



PROJECT MANAGEMENT AND  
ENGINEERING DEPARTMENT

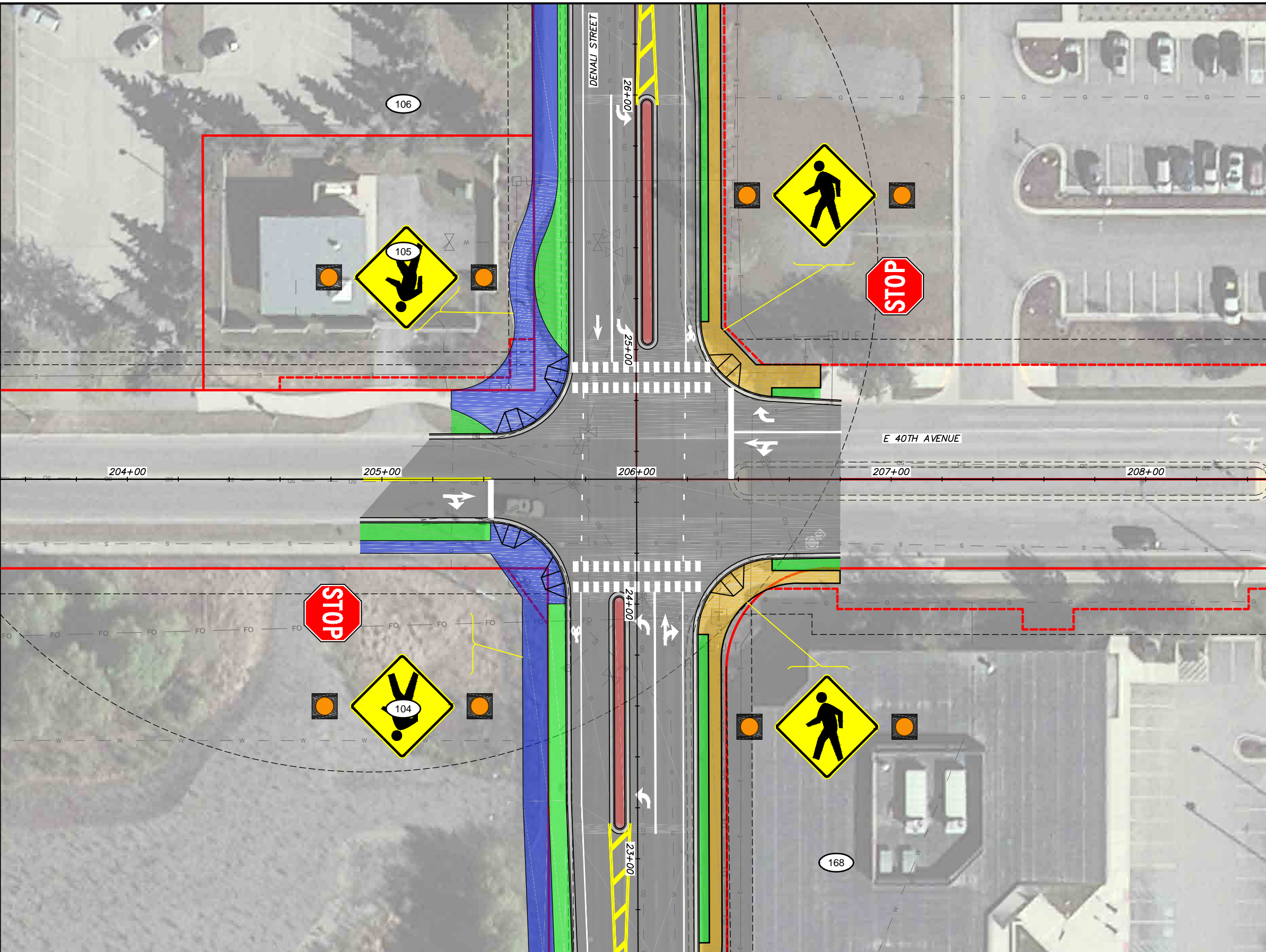
16-28 MIDTOWN CORRIDOR IMPROVEMENTS:  
DENALI STREET AREA - BENSON  
BLVD TO TUDOR RD  
DENALI STREET - ALTERNATIVE 3

SCALE 1:20 DATE 8/31/18 GRID 1531 1630 1631  
ACCT. NO. 1730 1731 SHEET 53 of 72

File Location: Z:\project\2517.01 MOA PME Denali Street\Civil\ACAD\2517\_Plan\_Denali\_Alt\_3.dwg

Plotted: 8/31/2018 9:30 AM

MATCH LINE E 40TH AVENUE STA. 203+50

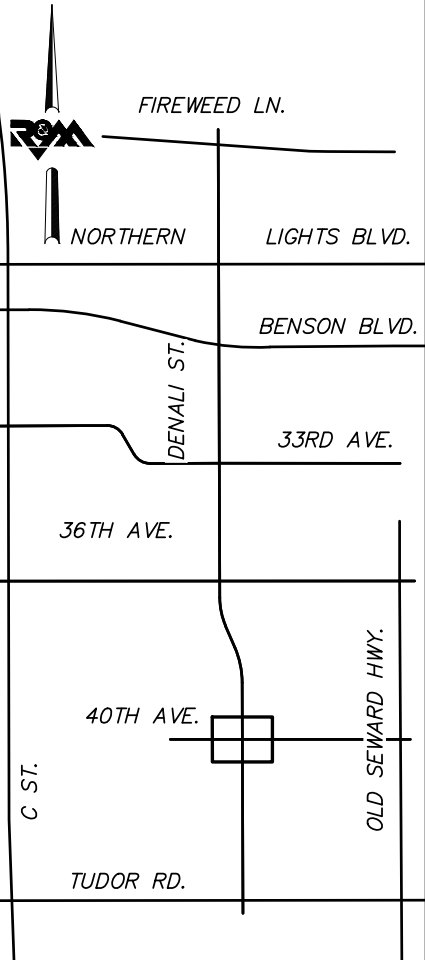


MATCH LINE E 36TH AVENUE STA. 208+50



BEFORE YOU DIG  
CALL FOR FREE  
UNDERGROUND  
LOCATION

LOCATE CALL CENTER OF ALASKA  
STATEWIDE ..... 800-478-3121 WILL  
NOTIFY SUBSCRIBED UTILITIES ONLY.  
OTHER UTILITIES NEED TO BE  
CONTACTED INDIVIDUALLY.



KEYMAP

DRAFT DSR  
AUGUST 2018



SCALE IN FEET

FIELD BOOKS	BM NO.	LOCATION	ELEV.	DATA	DRAWN BY	CHECKED BY	DATA	DRAWN BY	CHECKED BY	REV	DATE	DESCRIPTION	BY	REV	DATE	DESCRIPTION	BY
DESIGN				BASE TOPOGRAPHY PROFILE SANITARY SEWER STORM SEWER WATER GAS			TELEPHONE ELECTRIC CABLE TV DESIGN QUANTITIES MUN. FINAL CHK.										
CONTRACTOR	BASIS OF THIS DATUM																
INSPECTOR																	
CONSTRUCTION RECORD		VERTICAL DATUM					PLAN CHECK										
																	REVISIONS



R&M Consultants, Inc.  
9101 Vanguard Drive  
Anchorage, Alaska 99507  
907 522 1707 voice  
907 522 3404 fax  
www.rmconsult.com



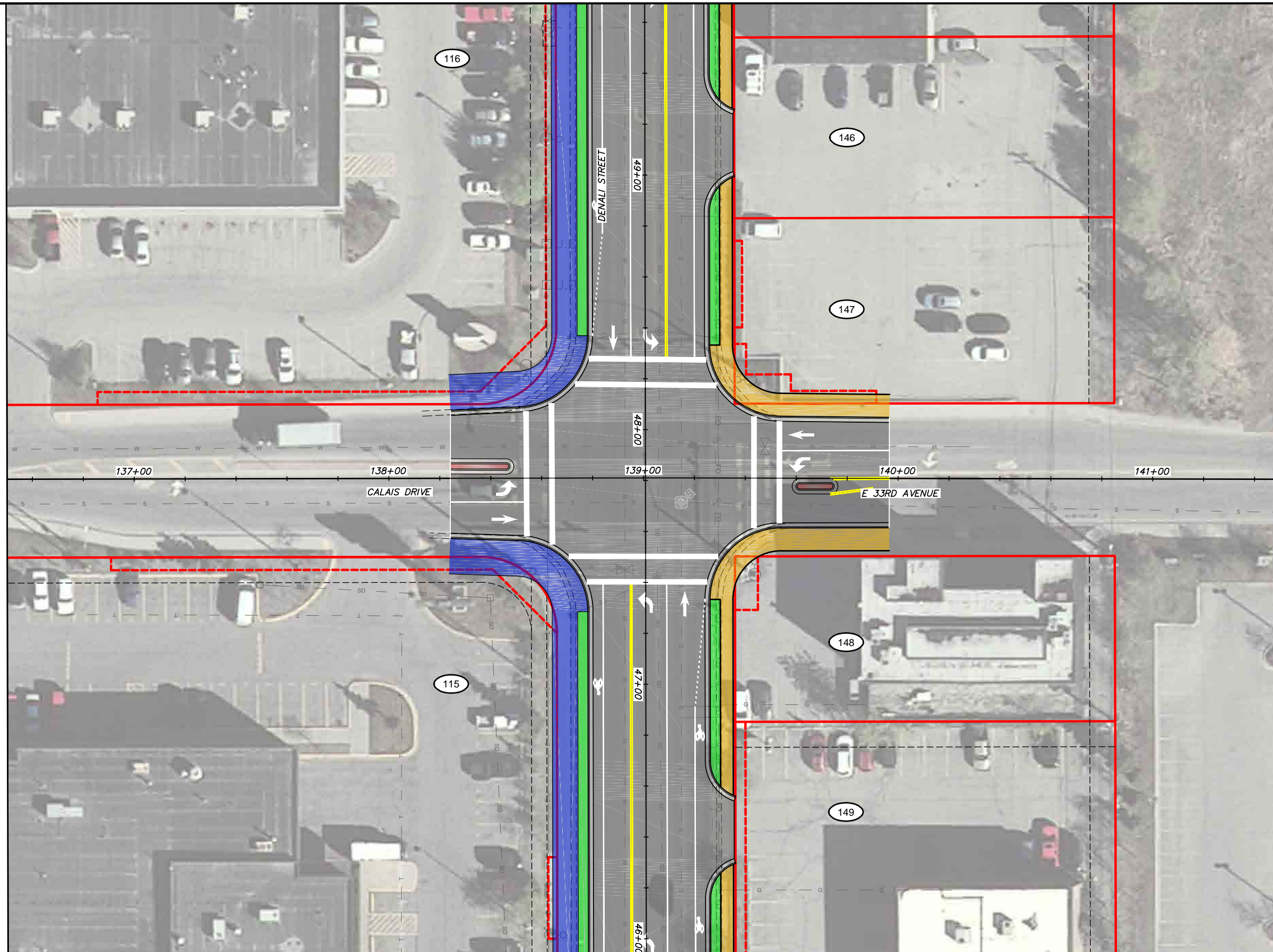
PROJECT MANAGEMENT AND ENGINEERING DEPARTMENT	
16-28	MIDTOWN CORRIDOR IMPROVEMENTS: DENALI STREET AREA - BENSON BLVD TO TUDOR RD  DENALI STREET - ALTERNATIVE 3
SCALE 1:20	DATE 8/31/18 GRID 1531 1630 1631 1730 1731 SHEET 54 of 72
	ACCT. NO.
CONSULTANT	SEAL



File Location: Z:\project\2517.01 MOA PME Denali Street\Civil\ACAD\2517\_Plan Denali Alt 3.dwg

Plotted: 8/31/2018 9:31 AM

MATCH LINE CALIAS DRIVE STA. 136+50

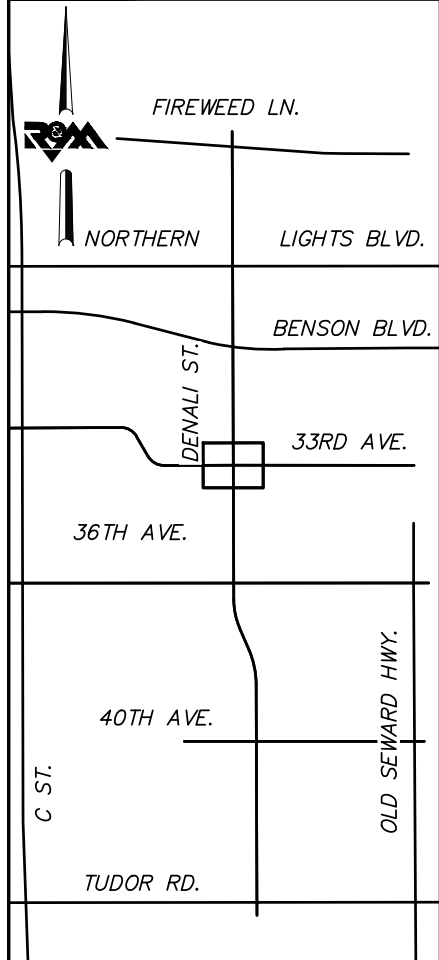


MATCH LINE E 33RD AVENUE STA. 141+50



**BEFORE YOU DIG  
CALL FOR FREE  
UNDERGROUND  
LOCATION**

LOCATE CALL CENTER OF ALASKA  
STATEWIDE ..... 800-478-3121 WILL  
NOTIFY SUBSCRIBED UTILITIES ONLY.  
OTHER UTILITIES NEED TO BE  
CONTACTED INDIVIDUALLY.



**KEYMAP**

**DRAFT DSR  
AUGUST 2018**



FIELD BOOKS	BM NO.	LOCATION	ELEV.	DATA	DRAWN BY	CHECKED BY	DATA	DRAWN BY	CHECKED BY	REV	DATE	DESCRIPTION	BY	REV	DATE	DESCRIPTION	BY
DESIGN				BASE TOPOGRAPHY PROFILE SANITARY SEWER STORM SEWER WATER GAS			TELEPHONE ELECTRIC CABLE TV DESIGN QUANTITIES MUN. FINAL CHK.										
CONTRACTOR	BASIS OF THIS DATUM																
INSPECTOR																	
CONSTRUCTION RECORD		VERTICAL DATUM					PLAN CHECK										
																	REVISIONS



R&M Consultants, Inc.  
9101 Vanguard Drive  
Anchorage, Alaska 99507  
907 522 1707 voice  
907 522 3404 fax  
www.rmconsult.com



PROJECT MANAGEMENT AND ENGINEERING DEPARTMENT	
16-28	MIDTOWN CORRIDOR IMPROVEMENTS: DENALI STREET AREA - BENSON BLVD TO TUDOR RD  DENALI STREET - ALTERNATIVE 3
SCALE 1:20	DATE 8/31/18 GRID 1531 1630 1631 1730 1731 SHEET 55 of 72